



2007-2008 ANNUAL REPORT
RICHMOND GATEWAY THEATRE SOCIETY



© 2002 Gateway Theatre. All rights reserved. No reproduction without written permission. Photo by southpawdesign.ca

Contents:

Introductory Section

Message from the Mayor	1
Message from the Chair	2
Richmond Gateway Theatre Society Board	3

Gateway Theatre 2007-2008 Operations

Gateway Theatre Mission Statement	4
Report from the Artistic and Executive Director	5
Main Stage Program	7
Studio Program	8
Academy Program	8
Volunteer Program	9
Community Clients	9
Facility Usage Report	10
Report from the Fundraising Chair	11
Special Thanks to Sponsors and Donors	12
Report from the Treasurer	15
Audited Financial Statements	16
Gateway Theatre Administration	28



City of RICHMOND

6911 No. 3 Road
Richmond, B.C. V6Y 2C1
Telephone: (604) 276-4123
Fax No: (604) 276-4332

MALCOLM BRODIE
MAYOR

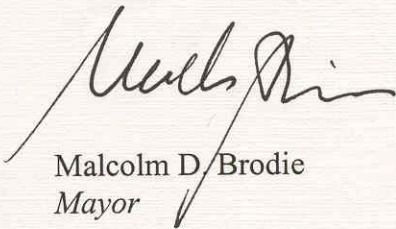
GREETINGS FROM THE MAYOR:

On behalf of City Council and the residents of Richmond, I would like to extend sincere greetings to all the readers of the *Gateway Theatre Society* 2007-2008 Annual Report.

The Gateway Theatre is one of the largest theatres in the province of British Columbia and contributes greatly to the Richmond community through its performing arts, public art displays, drama classes, professional theatre productions, and as a venue for meetings and film shoots.

Council is very proud of how the Gateway Theatre has been inclusive of a wide variety of artistic pursuits, at both the community and professional levels. We are especially proud of how this theatre reflects the culturally diverse nature of this community.

Thank you to all the volunteers, society members, and staff for your strong commitment to the Gateway Theatre and its subsequent success. Best wishes for the future!



Malcolm D. Brodie
Mayor



Message from the Chair

As we complete our 23rd year at the Gateway Theatre it is with enthusiasm for our upcoming Season. We had an exciting and prosperous year with a well-chosen line up of very popular plays. We were invited to participate in the 2008 Cultural Olympiad with Shirley Valentine and had critical and box office success with all of our productions. What a year, what a line up, we were nominated for 11 Jessie Nominations the most ever! And of course, ticket sales increased which resulted in a surplus that reduces our accumulated deficit.

This year as in the past we have successfully rented our theatre to our valued clients who produced a range of theatre, dance, music and film and television productions. We are a professional theatre for the region and are always open to new opportunities for our community to use the facilities.

Our Academy for the Performing Arts has grown and new programs have been introduced. Enrollment is up and we are looking forward to another banner year. We also welcomed past students of the Academy to perform on our stage and use our facility to create social profit for our community. We are proud of the success of our Academy students.

This year we hosted our inaugural Wine Tasting Event 'Clink'. The evening was a combination of wine and small plate tasting from 16 B.C. wineries and 6 local restaurants. Supporters of the Gateway supplied wonderful auction items which we happily bid on while sipping and nibbling the evening away. We had terrific attendance and the rave reviews and funds raised have led us to decide this will become an annual event. The Food and Wine Vendors are already booking their spots for next years 'Clink' and we expect it will be a 'SOLD OUT' affair.

In the past few years we have, in an endeavor to raise funds for the theatre, sponsored a raffle to win a wonderful trip. As in the past Times Square Travel has been our main sponsor and they put together an incredible journey to Italy and the Greek Isles for this past season. Congratulations to our 2008 winner, Susan Ovenden.

We could not do any of this without our dedicated Board, Staff and Volunteer Teams. I wish to express my sincere appreciation for the hours of dedicated time given by these groups, without them we would not be. Thank You!

Lastly, my thanks to the City of Richmond for their ongoing support. As we approach our 25th anniversary, some updates are in the City Facilities lifecycle for the building. Watch for these upgrades that we hope will make your experience even more enjoyable. The future is exciting and with your support we are looking forward to another wonderful year at the Gateway.



Diane Cousar

Chair, Richmond Gateway Theatre Society



RICHMOND GATEWAY THEATRE SOCIETY BOARD
2007-2008

Executive Committee

Diane Cousar	Chair
E. Michael O'Brien	Vice Chair
Allana Murray	Treasurer
Keith Liedtke	Secretary
Evelina Halsey-Brandt	City Council Representative

Members at large

Fiona Czeschel
Leni Dinnell
Jack Evans
Rob Fleming
Mary Kemmis
Patrick McAndless
Samir Shah

Committees

Fundraising

Patrick McAndless, Chair
Jack Evans, Clink Co-Chair
Seemah Aaron
Diane Cousar
Leni Dinnell
Kim Evans
Rob Fleming
Mary Kemmis
Carmen McCracken
Samir Shah
Catherine Butler (staff)
Suzanne Haines (staff)

Finance

Allana Murray, Chair
Diane Cousar
Jerry Chong
Ron Climenhaga
Keith Liedtke
Suzanne Haines (staff)
Simon Johnston (staff)
Lucy Lai (staff)

Governors

Ron Climenhaga
Gordon Dalglish
Bill Maranda
Malcolm Brodie (on leave)
Arthur Ross (on leave)
Suzanne Haines (staff)
Simon Johnston (staff)

Nominating

Chris Morris, Chair
Ron Climenhaga
Suzanne Haines (staff)
Simon Johnston (staff)

Community Connections

Diane Cousar
Fiona Czeschel
Rob Fleming
Mary Kemmis
Suzanne Haines (staff)

Operating Agreement Task Force

Michael O'Brien
Diane Cousar
Suzanne Haines (staff)
Simon Johnston (staff)



Mission Statement

Gateway Theatre is a welcoming and inclusive regional theatre for Richmond and its surrounding communities. Encouraging participation and cultural diversity, we strive for excellence and leadership in the development and production of live professional theatre and programs that connect the community.

Core Values

These values define the way decisions are made at the Gateway Theatre. They create a welcoming team and inclusive culture for staff, volunteers, partners, clients, and patrons.

LEADERSHIP

- Sustainability
- Relationships with community
- Proactive

RESPECT

- Treatment of each other
- Positive attitude
- Dignity

INCLUSIVE

- Participation
- Diversity: cultural, social & ethnic
- Responsiveness

QUALITY

- Unique
- Artistic Excellence
- Innovation

Programs

Gateway Theatre's mission is implemented through programs delivered to the region. These programs are:

A: Live Professional Theatre

- Main Stage Productions
- Studio Productions
- Play Development
 - Commissions
 - Readings
 - Workshops
 - Dramaturgy
- Gateway Academy

B: Community Connections

- Partnerships
 - City of Richmond
 - Corporate
- Volunteer Program
- Special Events
- Rentals Program
- Mentorship



Report from the Artistic and Executive Director

The 2007-2008 season was both an artistic and financial success story that saw increased single ticket sales, larger **Academy** participation, more facility use by the community as well as the introduction of **CLINK**, our first wine festival. The year resulted in a surplus that has significantly reduced our accumulated deficit. We achieved this by reorganizing event schedules, presenting new pricing policies (with tickets available on the Internet) and by developing new audiences through our **eyeGO** program for youth. On the programming side we offered popular plays on the Main Stage and kept the Studio Series for new and more challenging works. We combined some Academy classes and focused on developing participation with younger students.

These initiatives reversed the previous year's results. We will continue to monitor the effectiveness of these strategies on a year to year basis.

In addition to our professional theatre programs, two-thirds of the annual facility dates were available to almost 60 rental groups, up from 40 in the previous year. There were also 36 groups that requested dates that were unavailable. We hosted a diversity of events including classical music concerts, choral recitals, Chinese opera, dance recitals, garden awards and meetings throughout the year. The facility was used 765 times and connected with over 57,000 patrons.

The **Main Stage** and **Studio Series** had 1983 subscribers, slightly lower than the previous year. However, brisk single ticket sales brought us up to a total of almost 24,000 patrons for six plays. The **Main Stage** series opened with the premiere of "*Radio Daze*" by Richmond resident João Canhoto. It was workshopped in our SceneFirst play development program and has since been published. "*My Fair Lady*" was wildly popular over the holiday seasons with several sold out houses. In February, Lois Anderson's touching performance reintroduced "*Shirley Valentine*" to a whole new generation who eagerly embraced this one-woman dramedy. The final Main Stage production was "*I Love You, You're Perfect, Now Change*" a small musical that "packed 'em in" with a fun look at relationships. In the **Studio** we partnered with the Belfry Theatre, Victoria to produce the premiere of local playwright Aaron Bushkowsky's "*My Chernobyl*" that received 11 Jessie nominations and also had a run at the Belfry. This was followed by "*I, Claudia*" a moving mask-drama about the coming of age of a little girl dealing with the affects of her parents' divorce. The Studio series continues to have sell-out runs and to attract new, culturally diverse audiences who appreciate the freshness and vigour of new works.

Scene First play development program, now in its fourth year, is dedicated to the development of new plays from across Canada. The goal is to find works suitable for future Main Stage and Studio programming. Four submissions were selected and given free, public readings in March. These were: "*How to be a Canadian*", "*Choices*", "*Burning In*" and "*Arc*". These will be short listed for future seasons. Additionally, we launched a pilot project called "*Sea of Stories*". This community engagement initiative welcomed non-professional writers from Richmond to tell their stories at Gateway. Margreth Fry, Tamaka Fisher, Charan Gill, Muriel Feifman, Anneliese Schultz, and Kit Grauer created short plays about their experiences as Richmond residents. The studio was filled to capacity for two performances. This project will now be a bi-annual event.

The **Gateway Academy** continued to provide classes in drama and musical theatre for a range of levels from beginners through to the pre-professional level. There were almost 200 students registered

in 14 different classes from July to May. The students ranged from 8-18 years of age. Two-thirds were from Richmond and the remainder were from surrounding municipalities.

In addition to these core programs, we also provided other services that we group under the umbrella of **Community Engagement**. These areas include partnerships with numerous corporate sponsors. Most significant of these is the **City of Richmond**. Gateway Board and Staff have also participated as volunteers in a range of opportunities such as the City Centre Area Planning, Richmond Chamber of Commerce Business and Arts Committee, Tourism Richmond's Marketing Committee, Richmond Arts Coalition and numerous charity events throughout the year. We are most proud of our leadership role in partnering with the City of Richmond, the Chamber of Commerce, the BC Children's Art and Literary Society to produce two studies completed in 2008: the Arts & Culture Economic Study; and the Arts and Culture Community Scan. These combined with the City of Richmond's Arts Strategy and the Parks, Recreation and Culture Department's Master Plan will inform the future development of the arts and culture in Richmond.

Included under the umbrella of Community Engagement is Gateway's **Volunteer** program that continues to flourish. We have over 132 volunteers who donated over 9,301 hours of work as ushers, coat checkers, bar tenders and office assistants. In all, our Volunteers contributed \$90,783 worth of services.

The positive financial bottom line and other statistics mentioned above only tell one side of Gateway's success. There is another "bottom line" that is also important and explains why we exist as an organization. When all is said and done, I believe that Gateway is a powerful agent of human change that contributes positively to the way of life in our community. We can (and should) also be judged by stories of change, like the young Academy student who was tongue tied on the first day but ended up playing the lead role; the first time volunteer who had no social skills and now volunteers for two other community charities; the first time playwright whose play was published; and literally thousands of other stories that elevate positive growth in individuals and in group participants. In this regard we are truly blessed to be a catalyst that includes and welcomes the opportunity to play an important role in the way we live, connect and grow in Richmond.

I would like to thank the Board of Directors for their unflagging support of our programs and my personal thanks to our volunteers, our administration team, our production personnel and our faculty for their selfless contribution to excellence in the performing in our community.

A stylized, handwritten signature in black ink. The first part of the signature is a large, looped 'S' that extends below the baseline. The second part is the word 'Simon' written in a cursive, handwritten style.

Simon Johnston
Artistic & Executive Director

What our patrons said about our 2007-2008 Main Stage Productions



Radio Daze by João Canhoto

"At the end of the evening I heard someone say "Everybody left with a smile on their face". - it's a hit!"

"Really enjoyed Radio Daze. I saw it early in the run and was amazed at how well the cast had mastered the intricate timing required.."

From left: Anna Cummer, Peter Wilson, Ashley O'Connell, Leslie Ewen, Irene Karas. Photo: David Cooper

My Fair Lady Book & Lyrics by Alan Jay Lerner, Music by Frederick Loewe

"I love My Fair Lady and have seen the movie four times. I have never enjoyed the show or the music as much as I did in your production this afternoon. From the sets to the orchestra to the direction, all were excellent. The principal players were outstanding and the whole show had a greater vibrancy than I have experienced before."

"It was wonderful, worthy of the Broadway stage."



Lauren Bowler as Eliza Doolittle, and ensemble.
Photo: David Cooper



Shirley Valentine by Willy Russell

It was a wonderful performance. She had my friends and I in the palm of her hand. Thank you.

"Shirley Valentine is gorgeous. A beautifully written layer-cake of theatre..."

VANCOUVER SUN

"Anderson is fabulous as Shirley Valentine."

THE PROVINCE

"A one-actor triumph..." RICHMOND REVIEW

Lois Anderson. Photo: David Cooper

I Love You, You're Perfect, Now Change Book & Lyrics by Joe DiPietro, Music by Jimmy Roberts

That was the best show ever! My wife and I and her friend never laughed so much in a short period of time.

I think the last couple of plays have turned my husband into a real live theatre fan.

It was funny, well written, well acted and well timed. We were crying we were laughing so hard. ...a most enjoyable play and a night out!



Timothy Brummund, Tracey Power, Angela Hendricks, Ron Pederson. Photo: David Cooper

What our patrons said about our 2007-2008 Studio Series Productions



My Chernobyl by Aaron Bushkowsky

"It was fantastic, really enjoyed it."

"...the playwright's sharp slap at greed, stupidity and hypocrisy is so beautifully realized by cast and crew that *My Chernobyl* is one of the standout shows of the season." Peter Birnie, Vancouver Sun

"Your best bet for smart, cynical theatre, *My Chernobyl* gets a glowing recommendation."

Allan Morgan, Colleen Wheeler, Celine Stubel

Photo: Sherry Elasoff

I, Claudia by Kristen Thomson

We just loved Liisa Repo-Martell. How one can carry 90 minutes like that and keep entertaining until the end is truly amazing. What a talent!

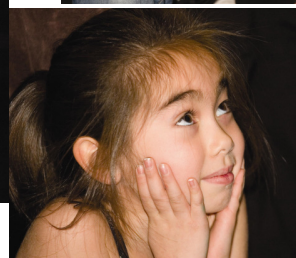
The drive home was quite animated as we all had very positive comments on her presentation of the 4 characters (especially Claudia) in masks and her costume changes.

Liisa Repo Martell



The Academy

Host to 12 classes and over 200 youth, the Academy classes thrived with students aged 8-18 learning drama and musical theatre. Performance classes productions included *As You Like It* by William Shakespeare and *A Year with Frog & Toad* by Robert & Willie Reale





Volunteer Program

Many, many thanks to our volunteers! Serving as ushers, coat check attendants, ticket takers, assistant bartenders, and clerical assistants, volunteers are Gateway ambassadors. Their hours, efforts, memberships, and donations make volunteers an integral part of the Gateway family. Our heartfelt appreciation and unending gratitude to every volunteer!

Total Number of Volunteers	132
Number of Volunteers with over 10 years of service	55
Total hours of donated time in 2007-2008	9,301 hours
\$ Value of time	\$90,783

BRAVO VOLUNTEERS!

Our Community Clients

Every year our facility is used by a variety of organizations. This past year, we welcomed new and returning clients, many of whom have been with us since 1985. We met the requirements of renters of a variety of artistic disciplines in a professional theatre atmosphere. Gateway Theatre's clients for 2007-2008 were:

AJW Music & Video Ltd
 Arts Umbrella*
 Beulalah Premarajah
 Burke Academy of Dance*
 Cambie Secondary*
 Chinese Mental Wellness
 Chinese Women Association
 City of Richmond*
 Dance Co
 Defy Gravity
 E=MC2
 Festival of Voice*
 Frontera Productions LTD
 Gabriela's Movement Studio*
 Matchbox Entertainment
 North Shore Theatre for Children
 Pacific Piano Competition*
 Ping Academy
 Protocol (BC) Productions
 RC Palmer Secondary*
 Richmond Academy of Dance*
 Richmond Chinese Folk Dance Society*
 Richmond Community Band*
 Richmond Concert Association*

Richmond Youth Concert Band*
 Richmond Youth Orchestra*
 Richmond Public Library Charlotte Diamond
 Richmond School Board – RichCity Idol
 Richmond School Board – Jazz Nite
 Richmond School Board – Music in Our Schools
 Scouts Canada
 Springtime Experimental Stage
 Steveston Arts Connection
 Studio 200
 Super Productions
 Touring Players*
 Two - Fifty
 Vancouver Academy of Dance*
 Victor Tsui
 Wei Li
 xentelDM
 York House School

Memorial Services

*Organizations who have been clients for more than 10 years

Facility Usage Report

MONTH	Total Attendance	Attendance			Number of Times Used			
		Gateway Theatre Plays	Academy	Clients	Studio A	Studio B	Lobby	Theatre
JULY (2007)	1519	0	1141	378	23	23	0	25
AUGUST	1882	58	247	1577	10	7	9	8
SEPTEMBER	2579	177	360	2042	12	22	6	19
OCTOBER	3297	2877	420	0	11	30	17	22
NOVEMBER	4766	661	415	3690	27	30	5	13
DECEMBER (2007)	8810	8103	307	400	11	20	2	25
JANUARY (2008)	1444	417	476	551	19	33	2	13
FEBRUARY	6844	5365	476	1003	28	25	1	24
MARCH	3573	1009	252	2312	15	38	2	6
APRIL	7434	4177	860	2397	36	8	3	21
MAY	9331	802	0	8529	15	17	3	21
JUNE (2008)	5866	247	25	5594	26	14	1	17
TOTAL	57345	23893	4979	28473	233	267	51	214

TOTAL ATTENDANCE: 57345
 USAGE 765





Message from the Fundraising Chair

The 2007-2008 Fundraising initiatives featured our inaugural wine & food fundraiser, Clink! and a raffle for a trip to Greece.

Clink! was a tremendous success with 200 people in the lobby and Studios A and B. Patrons enjoyed fine food from around Richmond, BC wineries and tables of silent auction prizes. The event raised a gross profit of \$21,830 in funds for the theatre programs and beyond the financial benefits, introduced the theatre to new patrons and supporters in the food and wine industry who continue to support us.

Ticket sales for the raffle kicked off in December with the winter musical, My Fair Lady with the draw at the end of Shirley Valentine in March. The trip was co-sponsored by Times Square Travel and the Gateway Theatre and raised a gross profit of \$19,890. Our winner, Susan Ovenden continues to be congratulated on our website.

As you probably know, we also could not produce a season without our sponsors and donors. Tickets only cover 50% of the cost of a production so our sponsors and donors make up the difference. Each year we are overwhelmed by the support from the community and this year was no different. Please see the enclosed listing to celebrate our supporters with us.

Fundraising is always a challenge for the Arts that requires dedicated and hard working individuals. And for that, I thank the Board members, volunteers and staff of the Gateway for their unwavering support and service.

	2007-2008	2006-2007	2005-2006
Revenues			
Fundraising	41,720	15,153	20,920
Memberships & Donations	22,510	25,841	18,064
Sponsorships	30,500	35,200	32,955
Grants*	94,589	147,66	91,484
Total Revenues	189,319	223,861	163,423
Total Expenses	25,293	28,129	21,808
Net Raised	164,026	195,732	141,615

*One year increase to grants related to pilot project 'Sea of Stories'

Patrick McAndless
Chair, Fundraising Committee

Special thanks to all sponsors who recognize the importance of the arts in our community and whose support enables Gateway to sustain excellence in programming:

SUSTAINING SUPPORTER:

The City of Richmond

Educational Outreach Sponsor

RBC Foundation

Ticket Sponsor

Pryke Lambert Leathley Russell, LLP

Opening Night Sponsors

Anna's Cake House

The Boathouse Restaurant – Richmond

Cobs Bread – Richmond Centre

George's Taverna

Mad Greek Restaurant

Milestone's – Richmond

Starbucks – Richmond Centre

Performance Sponsors

The Fairmont Vancouver Airport Hotel

Univar Canada

Project Support

British Columbia Arts Council

The Canada Council for the Arts

Metro Vancouver Regional District

Richmond Chinatown Lions Club

The Sunrise Rotary

Raffle Sponsor

Times Square Travel Ltd.

Media Sponsors

Richmond Review

Richmond News

QMFM

Corporate Support

Stereo Printers

CLINK 2007 SUPPORTERS

Principal Players

Pryke Lambert Leathley Russell, LLP
Univar Canada Ltd

Product Sponsors

A.A. Advertising Ltd.
Keith Liedtke – Remax Westcoast
London Landing Contracting Ltd.
Reflections Gastronomie Restaurant

Feature Wineries

Blossom Winery
Andrew Peller Ltd
Domaine de Chaberton Estate Winery
Elephant Island Orchard Wines
Golden Beaver Winery
Hester Creek
Lake Breeze
Mt. Boucherie Estate Winery
Quails' Gate
Sandhill Estate Vineyard
Starling Lane Winery
Summerhill Pyramid Winery
Sanduz Estate Wines
Tinhorn Creek
Westham Island Estate Winery
Wild Goose Vineyards

Media Sponsors

The Richmond Review
KVOS Television
QMFM

Chocolate Gift Boxes

Brockmann's Chocolate Inc.

Feature Caterers

The Best Western Richmond Hotel &
Convention Centre
Canterbury Coffee
The Healthy Chef
Notti Biscotti
Papi's Ristorante Italiano
The Point Restaurant & Tapas Bar
Radisson Hotel Vancouver Airport
Reflections Gastronomie Restaurant

Gifts in-kind

Prosperity Laundry
Radisson Hotel Vancouver Airport
Rotary Club of Steveston
Southpaw Design
Stereo Printers
Steveston Community Centre
The Information Refinery

Special thanks to our 2007/2008 Donors

Margaret Agrey	Arnold Gerding	Bill McNulty
Hazel & Archie Anderson	Raymond Godfrey	Yvonne Meier
Ted Andrew	Betty Goodwin	Stephen Mikulin
Michael Bailey & Associates Inc.	John Gorham	Naomi Miller
Linda Barnes	Derek Gretsinger	James & Jean Millet
Alan Batcheller	Marlene Grey	Chris Morris
Gary Bateman	Charles Grierson	Anne Morrison
Gordon & Frances Bates	Myrtle Groves	Clare Morrow
Bonnie Beaman	Ben Gwaltney	Bob & Lois Munroe
Alec Becker	Evelina & Greg Halsey-Brandt	Allana Murray
Leslie Bland	Laurie Hamm	Kevin Needham
Viola Bowdish	Heidi Hannay	William New
Delia Boyko	June Hanson	E. Michael O'Brien
Wendy Brayer	Roy Harrison	Edward Odette
Malcolm Brodie	Alice & William Hawkins	Leona Paxton
Suzanne Buckley	Arlene Helme	Lynne Perreault
Linda Bye	Lilian Hudson	Llinos Pritchard
Drew Carlisle	Allison Huggett	Mary Pritchard
Patricia Carnegie-Dunlop	Bob & Donna Humphries	John Richardson
Adrian Chan	Bernice Hunter	Rae Ryane
Pui Ming Chan	Audrey Ilott	Gail Screaton
Bonnie Chuter	Bruce Ingall	Sarjit Sekhon c/o RBC
Ron & Lynnea Climenhaga	Evelyn Jackson	William Seney
Jane Cooley	Ella Johnson	Nansi Smith
Diane & Jim Cousar	Glenda Johnson c/o Telus	Rod Sopko
Audrey Coutts	Sheila Johnston	Norm Sorel
Fiona Czeschel	William Johnston	Frank Stephan
George & Ruth Dahl	Alfred Jung	Robert Sundell
Denise & Don Dale	Richard & Lorraine Kaczor	Ted Townsend
Charmis Deboer	Susan & Josef Kaltenegger	Joan Tweedlie
Lee & Wendy Dennill	Masako Kato	Maureen Uldall-Ekman
Leni Dinnell	Mary Kemmis	Barrie Vickers
George Edgson	Jim Kenney	John Walker
Jim Elgood	Kathy Kent	R.G Walker
Gloria & Tim Enno	Don King	Dana Westermarck
Hans Enns	Barbara Kissuras	Garry White
Jack & Kim Evans	Bill & Lucy Lai	Roswitha Wilby
Michael Fehr	Bob & Jean Lane	Gordon Wilson
Donna Ferguson	Keith Liedtke	June Wilson
Fern Finn	Thelma Lloyd	Thomas & Helen Woods
John Fisher	Wanda Marrs	Mae Yee
Marjorie Fisher	Michael Matthews	Carol Yeo
Vida Flainek	Patrick McAndless	Charles Young
Robert Fleming	Jean McBurney	
Laurie Fredricksen	Lornaf McDowell	
Bob Garnett	Mary McInnes	
Myrna Geib	Gillian McIntyre	



Message from the Treasurer

For the year ended June 30, 2008, we had a positive bottom line in Operations of \$47,044, which decreased our accumulated operating deficit to \$85,443. We will continue our efforts through increased revenues and reduced operating expenditures to eliminate the remaining operating deficit over the next few years. We will strive to implement any reductions in operating expenditures without impacting on the quality of the programs that we offer.

The Administration Fund shows a surplus for the year of \$1,151 resulting in an accumulated deficit of \$78,573. The deficit in this fund results from an increase in the vacation entitlement for some of the employees that they were unable to fully take before the year-end. Through careful management of outstanding vacation and overtime balances, we hope to reduce this liability over the next few years.

I thank all of the Financial and Administrative staff of the Gateway Theatre for their continued support of the Finance Committee over the past year. I would also like to thank all members of the Finance Committee for their active participation and advice to the Board of the Richmond Gateway Theatre Society.

A handwritten signature in cursive script that reads "Allana Murray".

Allana Murray

Treasurer, Richmond Gateway Theatre Society

RICHMOND GATEWAY THEATRE SOCIETY

Financial Statements

June 30, 2008



BLUE FISH GROUP
CHARTERED ACCOUNTANTS



BLUE FISH GROUP
CHARTERED ACCOUNTANTS

AUDITORS' REPORT

To the Members of Richmond Gateway Theatre Society

We have audited the statement of financial position of Richmond Gateway Theatre Society as at June 30, 2008 and the statements of operations and fund balances, and cash flows for the year then ended. These financial statements are the responsibility of the company's management. Our responsibility is to express an opinion on these financial statements based on our audit.

We conducted our audit in accordance with Canadian generally accepted auditing standards. Those standards require that we plan and perform an audit to obtain reasonable assurance whether the financial statements are free of material misstatement. An audit includes examining, on a test basis, evidence supporting the amounts and disclosures in the financial statements. An audit also includes assessing the accounting principles used and significant estimates made by management, as well as evaluating the overall financial statement presentation.

In our opinion, these financial statements present fairly, in all material respects, the financial position of the company as at June 30, 2008 and the results of its operations and its cash flows for the year then ended in accordance with Canadian generally accepted accounting principles. As required by the Society Act of British Columbia, we report that, in our opinion, these principles have been applied on a basis consistent with that of the preceding year.

Blue Fish Group

Chartered Accountants

Burnaby, B.C.
August 7, 2008

RICHMOND GATEWAY THEATRE SOCIETY

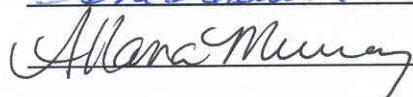
Statement of Financial Position

June 30, 2008

	2008	2007
ASSETS		
CURRENT		
Cash and term deposits (Note 3)	\$ 226,871	\$ 84,632
Accounts receivable	10,405	21,751
Inventory	3,771	5,457
Prepaid expenses	17,477	9,749
Prepaid production expenditures	44,057	55,898
Deferred Web Sales development expenditures (Note 2)	7,355	11,033
	<u>309,936</u>	<u>188,520</u>
TERM DEPOSITS RESTRICTED FOR ENDOWMENT FUNDS	<u>320,697</u>	<u>312,749</u>
	<u>\$ 630,633</u>	<u>\$ 501,269</u>
LIABILITIES AND NET ASSETS		
CURRENT		
Accounts payable and accrued liabilities	\$ 128,578	\$ 129,982
Deferred operating revenue	339,355	265,341
	<u>467,933</u>	<u>395,323</u>
COMMITMENTS AND CONTINGENCIES (Note 5)		
NET ASSETS (DEFICIENCY)		
Externally restricted administration fund	(78,573)	(79,724)
Internally restricted general endowment fund	310,697	302,749
Externally restricted Rotary endowment fund	10,000	10,000
Internally restricted grant fund	6,019	5,408
Unrestricted operating fund	(85,443)	(132,487)
	<u>162,700</u>	<u>105,946</u>
	<u>\$ 630,633</u>	<u>\$ 501,269</u>

ON BEHALF OF THE BOARD

 Board Chair

 Treasurer

See accompanying notes to financial statements



BLUE FISH GROUP
CHARTERED ACCOUNTANTS

RICHMOND GATEWAY THEATRE SOCIETY
Statement of Operations and Fund Balances
Year Ended June 30, 2008

	Operating fund (Schedule 1)	Administration fund (Schedule 2)	Grant fund (Schedule 3)	Rotary Endowment fund	General Endowment fund	2008	2007
Revenues	\$ 1,098,244	\$ 905,850	\$ -	\$ 398	\$ 11,922	\$ 2,016,414	\$ 1,753,044
Expenditures	1,051,200	904,699	3,363	398	-	1,959,660	1,838,317
Excess (deficiency) of revenues over expenditures before transfers	47,044	1,151	(3,363)	-	11,922	56,754	(85,273)
Interfund transfers (note 4)	-	-	3,974	-	(3,974)	-	-
Excess (deficiency) of revenues over expenditures	47,044	1,151	611	-	7,948	56,754	(85,273)
Fund balance, beginning of year	(132,487)	(79,724)	5,408	10,000	302,749	105,946	191,219
Fund balance, end of year	\$ (85,443)	\$ (78,573)	\$ 6,019	\$ 10,000	\$ 310,697	\$ 162,700	\$ 105,946

See accompanying notes to financial statements

RICHMOND GATEWAY THEATRE SOCIETY

Statement of Cash Flows

Year Ended June 30, 2008

	2008	2007
OPERATING ACTIVITIES		
Excess (deficiency) of revenues over expenses	\$ 56,754	\$ (85,273)
Changes in non-cash working capital:		
Accounts receivable	11,346	(432)
Inventory	1,686	(1,932)
Prepaid expenses	(7,728)	1,008
Prepaid production expenditures	11,841	(37,167)
Accounts payable and accrued liabilities	(1,404)	(21,093)
Deferred operating revenue	74,014	11,825
Deferred Web Sales development expenditures	3,678	(11,033)
	<u>93,433</u>	<u>(58,824)</u>
Cash flow from (used by) operating activities	<u>150,187</u>	<u>(144,097)</u>
INCREASE (DECREASE) IN CASH FLOW	150,187	(144,097)
CASH - Beginning of year	<u>397,381</u>	<u>541,478</u>
CASH - End of year	<u>\$ 547,568</u>	<u>\$ 397,381</u>
CASH CONSISTS OF:		
Cash and term deposits	\$ 226,871	\$ 84,632
Term deposits	<u>320,697</u>	<u>312,749</u>
	<u>\$ 547,568</u>	<u>\$ 397,381</u>

See accompanying notes to financial statements



BLUE FISH GROUP
CHARTERED ACCOUNTANTS

RICHMOND GATEWAY THEATRE SOCIETY

Notes to Financial Statements

Year Ended June 30, 2008

1. PURPOSE OF ORGANIZATION

The Richmond Gateway Theatre Society was founded in 1982, is incorporated as a non-profit society under the Society Act of British Columbia and is tax-exempt as a registered charity and charitable organization under the Income Tax Act.

The purpose of the society is to manage and operate the Richmond Gateway Theatre on behalf of the City of Richmond (the "City") and its citizens. The direct revenue sources of the Society are not sufficient to cover its total expenditures and, as a result, the continued support of the City of Richmond is required to finance the building and administration costs of the Society.

2. SUMMARY OF SIGNIFICANT ACCOUNTING POLICIES

Inventory

Inventory is valued at the lower of cost and net realizable value.

Capital assets

Under the terms of the agreement between the Richmond Gateway Theatre and the City of Richmond, all capital assets acquired by the Society are the property of the City.

Deferred Web Sales development expenditures

In 2007, the Society incurred expenditures in developing a "Web Sales" program for the sale of theatre tickets through the internet. The expenditures included upgrades to software, equipment, training, website development and design, and other related costs. As revenue will be earned over the upcoming future years and as these expenditures are expected to have an enduring benefit, the Board of Directors resolved to amortize these deferred expenditures starting in 2008 for a period of 3 years on a straight-line basis.

Revenue recognition and basis of financial statement presentation

The Society follows the deferral method of accounting for contributions.

Unrestricted contributions are recognized as revenue when received or receivable if the amount to be received can be reasonably estimated and collection reasonably assured. Production revenue and expenses are matched whereby revenue received for future productions is recorded as deferred operating revenue and expenditures made for future productions are recorded as prepaid production expenses.

From time to time, the Board of Directors (the "Board") may impose certain restrictions on fund balances. These amounts are presented on the statement of financial position and statement of operations and fund balances. These internally restricted amounts are not available for other purposes without approval of the Board of Directors.

Endowment contributions are recognized as direct increases in net assets. Externally restricted contributions are recognized as revenue in the year in which the related expenses are recognized.

RICHMOND GATEWAY THEATRE SOCIETY

Notes to Financial Statements

Year Ended June 30, 2008

2. SUMMARY OF SIGNIFICANT ACCOUNTING POLICIES *(continued)*

Administration fund

This fund represents the cumulative excess (deficiency) of revenues over expenditures relating to the management and operation of the Richmond Gateway Theatre. The revenue for this fund is received from the City and expenditures are restricted by an annual budget which is approved by the City.

General endowment fund

The Society's Board of Directors has internally restricted resources for endowment purposes. Investment income on this amount is allocated based on the Board's discretion. These internally restricted amounts are unavailable for other purposes without approval of the Board of Directors.

Rotary endowment fund

This externally restricted fund represents deposits resulting from a grant of \$10,000 from the Richmond Sunrise Rotary Club. Interest earned on these deposits is to be used for bursaries and scholarships of the summer musical theatre program.

Net assets internally restricted for grants

These contributions have been set aside for distribution to various community groups to assist with special production costs, use of Richmond Gateway Theatre where not otherwise possible, educational costs or special events.

Measurement uncertainty

The preparation of financial statements in accordance with generally accepted accounting principles requires management to make estimates and assumptions that affect the reported amount of assets and liabilities and disclosure of contingent assets and liabilities at the date of the financial statements and the reported amounts of revenues and expenditures during the reporting period. These estimates are reviewed periodically, and, as adjustments become necessary they are reported in earnings in the period in which they become known.

Contributed services

Volunteers contribute their time every year to assist the Society in carrying out its activities. The value of contributed services of a non-remunerative nature is not recognized in these financial statements.

Financial instruments

The Society's financial instruments consist of cash and term deposits, accounts receivable, accounts payable and accrued liabilities and deferred operating revenue. Unless otherwise noted, it is management's opinion that the Society is not exposed to significant interest, currency or credit risks arising from these financial instruments. The fair value of these financial instruments approximate their carrying values, unless otherwise noted.



RICHMOND GATEWAY THEATRE SOCIETY

Notes to Financial Statements

Year Ended June 30, 2008

2. SUMMARY OF SIGNIFICANT ACCOUNTING POLICIES *(continued)*

Use of estimates

The preparation of financial statements in conformity with Canadian generally accepted accounting principles requires management to make estimates and assumptions that affect the amounts reported in the financial statements and accompanying disclosures. Although these estimates are based on management's best knowledge of current events and actions the organization may undertake in the future, actual results may differ from the estimates.

3. CASH AND TERM DEPOSITS

The cash and term deposit balance is made up of deposits less bank indebtedness and includes \$6,020 (2007 - \$5,408) in respect of the grant account, which is internally restricted.

4. INTERFUND TRANSFERS

1/3 of the interest earned on General Endowment fund is appropriated by the Board to the Grant fund.

5. COMMITMENTS AND CONTINGENCIES

Letters of guarantee:

The Society has a letter of guarantee outstanding in the amount of \$25,000 (2007 - \$25,000) which is not recorded in these accounts. The \$25,000 amount relates to a letter of guarantee provided to the Canadian Actors' Equity Association and its members as security for related obligations of the Society.

Production royalties:

As of June 30, 2008, the Society has obligations to pay minimum royalties of \$250 (2007 - \$3,500) to playwrights relating to productions taking place in the fiscal 2009 season. Royalties are payable at various dates in fiscal 2009, and have not been recorded as liabilities in these accounts.

Operating Leases:

The Society is committed under certain lease agreements for equipment. Future minimum lease payments on these leases, for the next five years, are as follows:

2009	\$	6,085
2010		321
		<hr/>
	\$	6,406



RICHMOND GATEWAY THEATRE SOCIETY

Notes to Financial Statements

Year Ended June 30, 2008

6. FUNDING FROM THE CITY OF RICHMOND AND ECONOMIC DEPENDENCE

The City of Richmond owns the theatre in which the Society is located, and the capital assets therein. The Society is economically dependent on the support of the City of Richmond. The Society has an operating agreement with the City of Richmond. The City provides annual funding, based on the Society's annual application. Total funding received from the City of Richmond for 2008 was \$905,850 (2007 - \$847,100).



BLUE FISH GROUP
CHARTERED ACCOUNTANTS

RICHMOND GATEWAY THEATRE SOCIETY

Statements of Operations and Fund Balances - Operating Fund (Schedule 1)

Year Ended June 30, 2008

	2008	2007
REVENUE		
Main Stage and New Play productions	\$ 550,788	\$ 313,036
Academy	97,676	111,810
Play development	462	368
Rentals	209,731	206,454
Sponsorships	30,500	35,200
Special events and fundraising	41,720	15,153
Grants	94,589	147,667
Memberships and donations	22,510	25,841
Bar, net	11,213	11,011
Miscellaneous, box office surcharge, interest, parking and equipment rentals	39,055	27,447
	<u>1,098,244</u>	<u>893,987</u>
EXPENDITURES		
Main Stage and New Play productions	672,074	570,346
Academy	118,654	131,520
Play development	26,520	35,754
Volunteer program expenses	3,951	1,790
Rentals	87,586	96,167
Sponsorship and membership expenses	8,567	16,567
Special events and fundraising	16,726	11,562
Subscription and advertising	82,996	83,082
Credit card, bank charges and interest	15,947	10,334
Miscellaneous, box office and parking expenses	18,179	13,537
	<u>1,051,200</u>	<u>970,659</u>
EXCESS (DEFICIENCY) OF REVENUE OVER EXPENDITURES	47,044	(76,672)
FUND BALANCE, beginning of year	<u>(132,487)</u>	<u>(55,815)</u>
FUND BALANCE, end of year	<u>\$ (85,443)</u>	<u>\$ (132,487)</u>

See accompanying notes to financial statements



BLUE FISH GROUP
CHARTERED ACCOUNTANTS

RICHMOND GATEWAY THEATRE SOCIETY

**Statements of Operations and Fund Balances - Administration Fund
(Schedule 2)**

Year Ended June 30, 2008

	2008	2007
REVENUE		
Funding from the City of Richmond (note 6)	\$ 905,850	\$ 847,100
EXPENDITURES		
Salaries and benefits	790,628	741,141
Office, supplies, delivery and other	39,954	47,164
Theatre supplies	21,182	25,676
Insurance	14,015	14,440
Travel, training and staff development	13,818	11,771
Association fees	6,254	7,535
Telephone	6,908	6,731
Legal and accounting	5,560	5,860
Computer support and software	6,380	4,458
	<u>904,699</u>	<u>864,776</u>
EXCESS (DEFICIENCY) OF REVENUE OVER EXPENDITURES	1,151	(17,676)
FUND BALANCE, beginning of year	<u>(79,724)</u>	<u>(62,048)</u>
FUND BALANCE, end of year	<u>\$ (78,573)</u>	<u>\$ (79,724)</u>

See accompanying notes to financial statements



BLUE FISH GROUP
CHARTERED ACCOUNTANTS

RICHMOND GATEWAY THEATRE SOCIETY
Statements of Operations and Fund Balances - Grant Fund **(Schedule 3)**
Year Ended June 30, 2008

	2008	2007
EXPENDITURES		
Distribution of grants	\$ 3,350	\$ 2,450
Bank charges	13	73
	<u>3,363</u>	<u>2,523</u>
TRANSFER OF INTEREST FROM		
General endowment fund	<u>3,974</u>	<u>3,866</u>
EXCESS OF TRANSFER OF INTEREST OVER EXPENDITURES	611	1,343
FUND BALANCE, beginning of year	<u>5,408</u>	<u>4,065</u>
FUND BALANCE, end of year	<u>\$ 6,019</u>	<u>\$ 5,408</u>

See accompanying notes to financial statements



BLUE FISH GROUP
CHARTERED ACCOUNTANTS

Gateway Administration 2007-2008

Artistic and Executive Director	Simon Johnston
General Manager	Suzanne Haines
Artistic Associate & Academy Instructor	Natasha Nadir
Administrative Assistant	Robin White
Production Manager & TD	Brian Heath
Head Stage Carpenter	Bill Davey
Head Electrician	Ed Arteaga
Finance Officer	Lucy Lai
Finance Assistant	Kelly Ye
Manager, Marketing & Publicity	Sherry Elasoff
Marketing Assistant	Shalyma Cambridge
Manager, Sponsorship & Development	Catherine Butler
Development Assistant	Ashley Li
Manager, Presentations & Rentals	Vivienne Stonier
Rentals Assistant	Jackie Schwarz
Box Office Assistant	Evelin Fowler
Box Office Assistant	Yvette Scholten
Box Office Assistant	Nancy Ziegler
Manager, Gateway Academy	Elizabeth Conway
Academy Instructors	
Spencer Bach	Lauren Bowler
Sarah Brown	Dawn Ewen
Heidemarie Guggi	Tracy Neff
Shawna Perry	Joshua Reynolds
Heidi Specht	Lenard Stanga
Kim Steger	Barbara Tomasic
Melissa Young	
Manager, Volunteers & Audience Services	Melissa Tsang
Volunteer & Audience Services Assistant	Emily Farrell
Program Intern	Susanne Lankin
Marketing Intern	Weldon Fung
Bartenders:	
Crystal Bishop	Stephanie Cornish
Holly Jones	Victor Liang
Rachel Sherwood	Sean Topps
Lynda Williams	
Building Services Coordinator	Paul Bartlett
Building Services Assistant	Mesfin Ayalew
Building Services Assistant	Jade Phung
eyeGO Youth Coordinator	Melissa Tsang
Satellite Companies:	
<u>Pacific Piano Competition</u>	<u>Pangaea Arts</u>
Dorothy Lau	Heidi Specht
Trudy Morse	Lenard Stanga