



**Road Closure and Removal of Road Dedication Bylaw No. 10625  
(Portion of Road Adjacent to 8620, 8640 and 8660 Spires Road)**

The Council of the City of Richmond enacts as follows:

1. The lands legally described as that part of Spires Road dedicated by Plan 21489 Sections 9 and 10 Block 4 North Range 6 West New Westminster District, shown outlined in bold on the Reference Plan EPP142108 prepared by Johnson C. Tam., attached as Schedule A, shall be stopped up and closed to traffic, cease to be a public road and the road dedication shall be removed; and
2. This Bylaw is cited as **“Road Closure and Removal of Road Dedication Bylaw No. 10625 (Portion of Road Adjacent to 8620, 8640 and 8660 Spires Road)”**.

FIRST READING

\_\_\_\_\_

SECOND READING

\_\_\_\_\_

THIRD READING

\_\_\_\_\_

ADOPTED

\_\_\_\_\_

CITY OF RICHMOND
APPROVED for content by originating dept.
<i>[Signature]</i>
APPROVED for legality by Solicitor
BRB

\_\_\_\_\_  
MAYOR

\_\_\_\_\_  
CORPORATE OFFICER

# Schedule A

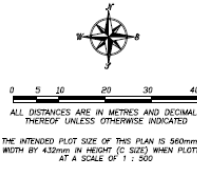
RZ 22-023633

REFERENCE PLAN TO ACCOMPANY THE CITY OF RICHMOND  
ROAD CLOSING AND REMOVAL OF ROAD DEDICATION BYLAW NO. \_\_\_\_\_  
OF A PORTION OF ROAD DEDICATED ON PLAN 21489  
SECTIONS 9 AND 10 BLOCK 4 NORTH RANGE 6 WEST  
NEW WESTMINSTER DISTRICT

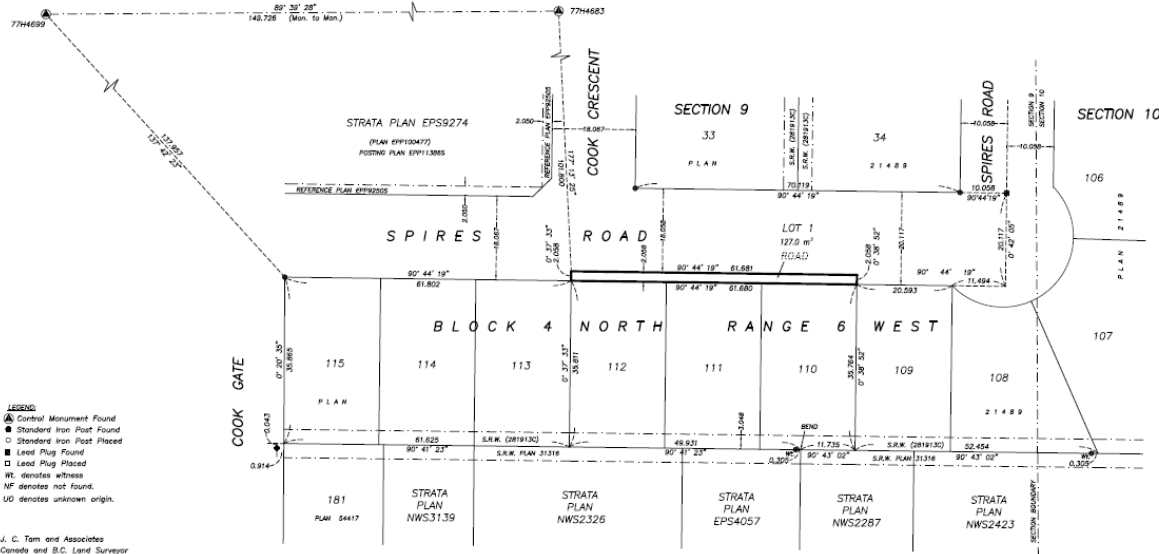
PLAN EPP142108

BCCS 92G.015  
PURSUANT TO SECTION 120, LAND TITLE ACT AND SECTION 40, COMMUNITY CHARTER

NAD83 (CSRS) 4.0.0.BC.1.MVRD UTM ZONE 10 COORDINATES				
SCM	NORTHINGS	EASTING	COMBINED FACTOR	ABSOLUTE ACCURACY
77H4683	5446166.499	490754.612	0.9995040	0.01
77H4699	5446167.605	490604.944	0.9995041	0.01



This plan lies within the Metro Vancouver Regional District.



- LEGEND**
- ▲ Control Monument Found
  - Standard Iron Post Found
  - Standard Iron Post Placed
  - Lead Plug Found
  - Lead Plug Placed
  - W: denotes witness
  - WF: denotes not found
  - UD: denotes unknown origin.

J. C. Tam and Associates  
Geomatics and B.C. Land Surveyor  
115 - 8833 Odlin Crescent  
Richmond, B.C. V6X 3Z7  
Telephone: 214-8928  
Fax: 214-8929  
E-mail: office@jctam.com  
Website: www.jctam.com  
Job No. 7952  
Drawn By: KA  
DWG No. 7952-REF

Grid bearings are derived from observations between geodetic control monuments 77H4683 and 77H4699 and are referred to the central meridian of UTM Zone 10.  
This plan shows horizontal ground-level distances unless otherwise specified. To compute grid distances, multiply ground-level distances by the average combined factor of 0.99950405.  
The average combined factor has been determined based on geodetic control monuments 77H4683 and 77H4699.

**Note:**  
This plan shows one or more witness posts which are not set on the true corners.  
The UTM coordinates and estimated absolute accuracy achieved are derived from the MASCOT published coordinates and standard deviations for geodetic control monuments 77H4683 and 77H4699.

This plan lies within the jurisdiction of the Approving Officer for City of Richmond.

The field survey represented by this plan was completed on the \_\_\_\_ day of \_\_\_\_\_ 2025.  
JOHNSON C. TAM, BCLS 711