



**Road Closure and Removal of Road Dedication Bylaw 8710  
(Road B Adjacent to 6071 River Road)**

The Council of the City of Richmond enacts as follows:

1. The lands legally described as road dedicated by Plan BCP30383 Section 6 Block 4 North Range 6 West New Westminster District (shown outlined in bold on the Reference Plan prepared by Matson Peck & Topliss, Surveyors and Engineers attached as Schedule A) shall be stopped up and closed to traffic, cease to be a public road and the road dedication shall be removed.
2. This Bylaw is cited as **“Road Closure And Removal of Road Dedication Bylaw 8710”**.

FIRST READING

APR 26 2011

SECOND READING

APR 26 2011

THIRD READING

APR 26 2011

DULY ADVERTISED

SEP 09 2011 SEP 14 2011

ADOPTED



\_\_\_\_\_  
MAYOR

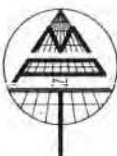
\_\_\_\_\_  
CORPORATE OFFICER

REFERENCE PLAN TO ACCOMPANY THE CITY OF RICHMOND ROAD CLOSURE AND REMOVAL OF ROAD DEDICATION BYLAW 8710 OF A PORTION OF ROAD DEDICATED BY PLAN BCP30383 SECTION 6 BLOCK 4 NORTH RANGE 6 WEST NEW WESTMINSTER DISTRICT

BCGS 92G.015  
PURSUANT TO SECTION 120 LAND TITLE ACT AND SECTION 40 COMMUNITY CHARTER

LEGEND  
SCALE 1:750

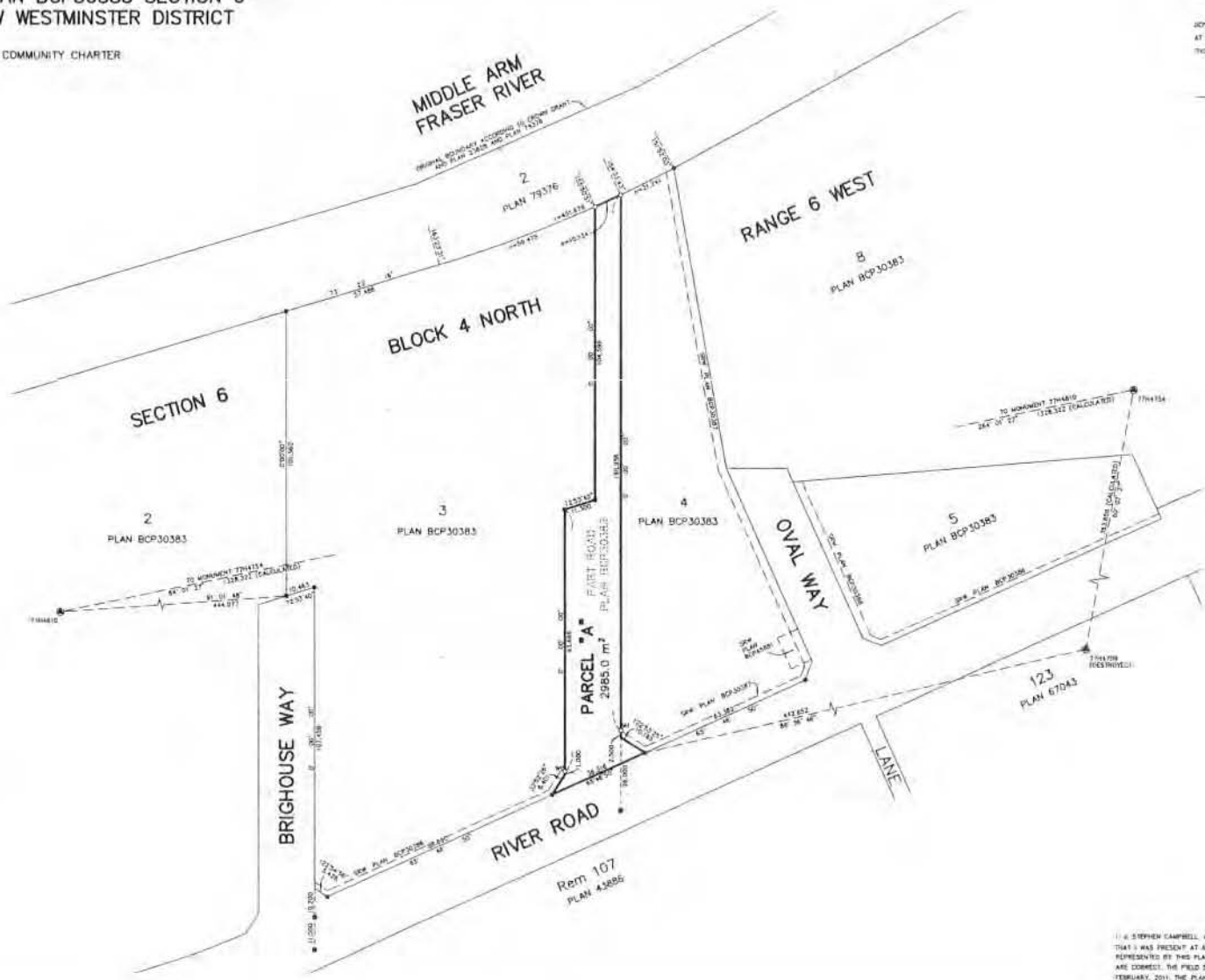
- ALL DISTANCES ARE IN METRES
- THE INTENDED PLOT SIZE OF THIS PLAN IS SHOWN IN METRES BY SECTION 61 HEIGHT (D-SIZE) WHICH PLOTTED AT A SCALE OF 1:750
- INDICATES CONTROL MONUMENT FOUND
- INDICATES STANDARD HIGH POST FOUND
- INDICATES STANDING HIGH POST PLACED
- INDICATES LEAD PLUG FOUND
- THIS BEARING ARE DERIVED FROM OBSERVATIONS BETWEEN CYCLOTRON CONTROL MONUMENTS 774418 AND 774417A, 7445 (2008) MONUMENTED SURVEY AREA NO. 18 CITY OF RICHMOND
- THIS PLAN SHOWS HORIZONTAL (GROUND-LEVEL) DISTANCES EXCEPT WHERE OTHERWISE NOTED TO COMPUTE SLO DISTANCES. MULTIPLY GROUND-LEVEL DISTANCES BY DIMENSIONED FACTOR 0.999994



EXECUTION DATE		PARTY(S) SIGNATURE(S) CITY OF RICHMOND BY ITS AUTHORIZED SIGNATORY
Y	M	
SIGNATURE		WALTER D. BROOK MAYOR, AUTHORIZED SIGNATORY
PRINT NAME		DAVID WEBER CORPORATE OFFICER, AUTHORIZED SIGNATORY

CNCL54  
PECK & TOPLISS  
SURVEYORS & ENGINEERS  
2150 HURONVILLE WAY  
RICHMOND, B.C. V7A 5H1  
PH: (604) 273-4221  
FAX: (604) 273-4127  
CAN: 905-961-7677-REG-000296  
BC: 3305-REF-RC

THIS PLAN LIES WITHIN THE GREATER VANCOUVER REGIONAL DISTRICT



AREA OF ROAD TO BE CLOSED = 2985.0 m<sup>2</sup>

PLAN BCP  
REF. No. \_\_\_\_\_  
REGISTERED IN THE LAND TITLE OFFICE AT NEW WESTMINSTER, B.C. THIS DAY OF \_\_\_\_\_ 2011

I, STEPHEN CAMPBELL, A BRITISH COLUMBIA LAND SURVEYOR, CERTIFY THAT I WAS PRESENT AT AND PERSONALLY SUPERVISED THE SURVEY REPRESENTED BY THIS PLAN AND THAT THE SURVEY AND PLAN ARE CORRECT. THE FIELD SURVEY WAS COMPLETED ON THE 27th DAY OF FEBRUARY, 2011. THE PLAN WAS COMPLETED AND CHECKED, AND THE CHECKLIST FILLED UNDER #20482 ON THE 3RD DAY OF MARCH 2011.

*Stephen Campbell*  
S.L.S.

SCHEDULE A