



**Road Closure and Removal of Road Dedication Bylaw 8887
(Portion of Road adjacent to 7451 No. 4 Road)**

The Council of the City of Richmond enacts as follows:

1. The lands legally described a portion of road dedicated by the deposit of plan LMP48207 Section 15 Block 4 North Range 6 West New Westminster District (shown outlined in bold on the Reference Plan prepared by Dhaliwal & Associates attached as Schedule A) shall be stopped up and closed to traffic, cease to be a public road and the road dedication shall be removed.
2. This Bylaw is cited as **“Road Closure and Removal of Road Dedication Bylaw 8887”**.

FIRST READING

SECOND READING

THIRD READING

DULY ADVERTISED

ADOPTED

CITY OF RICHMOND
APPROVED for content by originating dept.
APPROVED for legality by Solicitor

MAYOR

CORPORATE OFFICER

SCHEDULE A

FORM_SPC_V8

**SURVEY PLAN CERTIFICATION
PROVINCE OF BRITISH COLUMBIA**

PAGE 1 OF 2 PAGES

By incorporating your electronic signature into this form you are also incorporating your electronic signature into the attached plan and you

(a) represent that you are a subscriber and that you have incorporated your electronic signature to the attached electronic plan in accordance with section 168.73 (3) of the Land Title Act, RSBC 1996 c.250; and

(b) certify the matters set out in section 168.73 (4) of the Land Title Act.

Each term used in this representation and certification is to be given the meaning ascribed to it in part 10.1 of the Land Title Act.

GENE NIKULA
V9SCLA

Digitally signed by GENE NIKULA
V9SCLA
DN: c=CA, cn=GENE NIKULA
V9SCLA, o=BC Land Surveyor,
ou=Verify ID at www.julicert.com/
LKUP.cfm?id=V9SCLA
Date: 2012.09.28 12:33:25 -0700

1. BC LAND SURVEYOR: (Name, address, phone number)

Import Profile

Gene Paul Nikula

Unit 121

13140 80 Avenue

Surrey

BC V3W 3B2

Tel: 604-501-6188

Fax: 604-501-6189

Email: info@dhaliwalsurvey.com

☐ Surveyor General Certification

2. PLAN IDENTIFICATION:

Control Number: **134-886-0805**

Plan Number: **EPP24556**

This original plan number assignment was done under Commission #: **803**

3. CERTIFICATION:

☒ Form 9 ☐ Explanatory Plan ☐ Form 9A

I am a British Columbia land surveyor and certify that I was present at and personally superintended this survey and that the survey and plan are correct.

The field survey was completed on: 2011 November 16 (YYYY/Month/DD) The checklist was filed under ECR#: 141153

The plan was completed and checked on: 2012 September 28 (YYYY/Month/DD)

☒ None ☐ Strata Form S

☒ None ☐ Strata Form U1 ☐ Strata Form U1/U2

Arterial Highway ☐

4. ALTERATION: ☐

PLAN EPP24556

REFERENCE PLAN TO ACCOMPANY THE CITY OF RICHMOND ROAD CLOSING AND
REMOVAL OF ROAD DEDICATION BYLAW 8887 OF PORTION OF ROAD
DEDICATED BY PLAN LMP48207 SECTION 15 BLOCK 4 NORTH
RANGE 6 WEST NEW WESTMINSTER DISTRICT

PURSUANT TO SECTION 120 OF THE LAND TITLE ACT AND SECTION 40 OF THE COMMUNITY CHARTER

BCGS 92G.015

CITY OF RICHMOND

LEGEND

SCALE 1:1,500



(All dimensions are in metres)

The bounded plot area of this plan is shown in white by

43mm in height (5 mm) also plotted at a scale of 1:500.

Old bearings are defined from observations

bearing from the survey station 7784981.

Integrated Survey Area No. 15, Richmond, B.C.

MNS 63 (1988)

This plan shows horizontal ground-level distances unless

otherwise specified. To compute all distances, multiply

distances by the factor 1.000115.

Distances are shown in metres unless otherwise

indicated.

Distances are shown in metres unless otherwise

indicated.

Distances are shown in metres unless otherwise

indicated.

Distances are shown in metres unless otherwise

indicated.

Distances are shown in metres unless otherwise

indicated.

Distances are shown in metres unless otherwise

indicated.

Distances are shown in metres unless otherwise

indicated.

Distances are shown in metres unless otherwise

indicated.

Distances are shown in metres unless otherwise

indicated.

Distances are shown in metres unless otherwise

indicated.

Distances are shown in metres unless otherwise

indicated.

Distances are shown in metres unless otherwise

indicated.

Distances are shown in metres unless otherwise

indicated.

Distances are shown in metres unless otherwise

indicated.

Distances are shown in metres unless otherwise

indicated.

Distances are shown in metres unless otherwise

indicated.

Distances are shown in metres unless otherwise

indicated.

Distances are shown in metres unless otherwise

indicated.

Distances are shown in metres unless otherwise

indicated.

Distances are shown in metres unless otherwise

indicated.

Distances are shown in metres unless otherwise

indicated.

Distances are shown in metres unless otherwise

indicated.

Distances are shown in metres unless otherwise

indicated.

Distances are shown in metres unless otherwise

indicated.

Distances are shown in metres unless otherwise

indicated.

Distances are shown in metres unless otherwise

indicated.

Distances are shown in metres unless otherwise

indicated.

Distances are shown in metres unless otherwise

indicated.

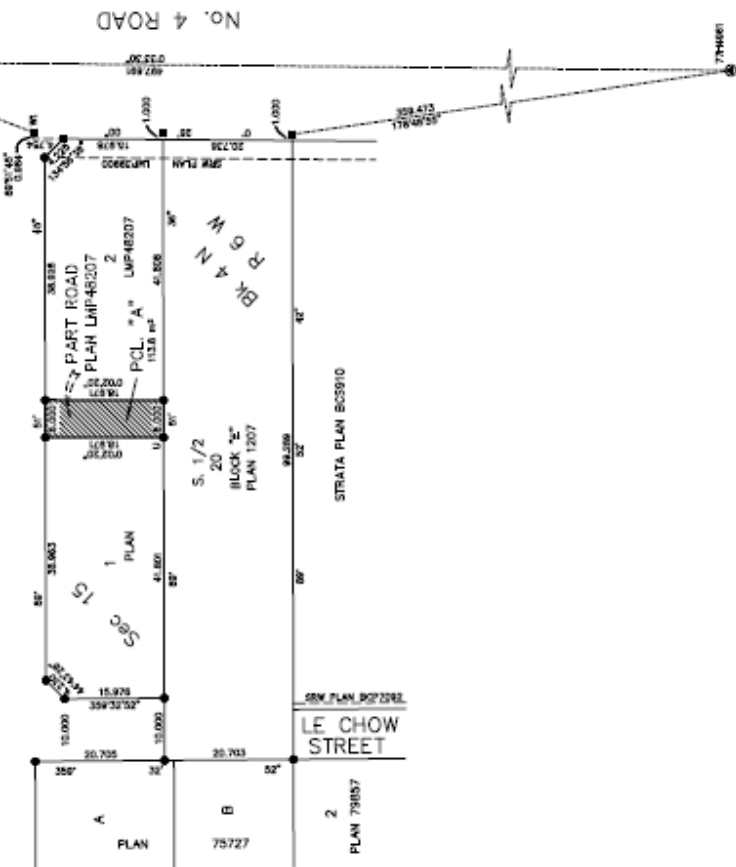
Distances are shown in metres unless otherwise

indicated.

Distances are shown in metres unless otherwise

indicated.

GENERAL CURRIE ROAD



Indicates portion of road to be closed

Indicates current measurement point

Indicates line point found

Indicates line point found

Indicates line point found

Indicates line point found

Indicates line point found

Indicates line point found

Indicates line point found

Indicates line point found

Indicates line point found

Indicates line point found

Indicates line point found

Indicates line point found

Indicates line point found

Indicates line point found

Indicates line point found

Indicates line point found

Indicates line point found

Indicates line point found

Indicates line point found

Indicates line point found

Indicates line point found

Indicates line point found

Indicates line point found

Indicates line point found

Indicates line point found

Indicates line point found

Indicates line point found

Indicates line point found

Indicates line point found

Indicates line point found

Indicates line point found

Indicates line point found

Indicates line point found

Indicates line point found

Indicates line point found

Indicates line point found

Indicates line point found

Indicates line point found

Indicates line point found

Indicates line point found

Indicates line point found

Indicates line point found

Indicates line point found

Indicates line point found

Indicates line point found

Indicates line point found

Indicates line point found

Indicates line point found

Indicates line point found

Indicates line point found

Indicates line point found

Indicates line point found

Indicates line point found

Indicates line point found

Indicates line point found

Indicates line point found

Indicates line point found

Indicates line point found

CHALUWAL & ASSOCIATES
LAND SURVEYING INC.

121 - 13140 86th Avenue

Surrey, B.C.

V3V 4K1

(604) 551-4588

(604) 551-4588

FAX: 1145454-0000

The field notes represented by
this plan were completed on
the 15th day of June, 2011.
CHALUWAL & ASSOCIATES

THIS PLAN LIES WITHIN THE GREATER VANCOUVER REGIONAL DISTRICT