



# City of Richmond

## Report to Committee

**To:** Parks, Recreation and Cultural Services Committee  
**Date:** June 25, 2024

**From:** Todd Gross  
 Director, Parks Services  
**File:** 06-2345-20-KGEO1/Vol 01

**Re:** **Community Partnership with the India Cultural Centre of Canada for King George Park Improvements**

### Staff Recommendation

That the staff report titled “Community Partnership with the India Cultural Centre of Canada for King George Park Improvements”, dated June 25, 2024, from the Director, Parks Services, be received for information.

Todd Gross  
 Director, Parks Services  
 (604-247-4942)

Att. 3

REPORT CONCURRENCE		
<b>ROUTED TO:</b>	<b>CONCURRENCE</b>	<b>CONCURRENCE OF GENERAL MANAGER</b>
Finance Department	<input checked="" type="checkbox"/>	
<b>SENIOR STAFF REPORT REVIEW</b>	<b>INITIALS:</b>	<b>APPROVED BY CAO</b>

## Staff Report

### Origin

This report has been prepared in response to a request from the India Cultural Centre of Canada (ICCC) to voluntarily contribute funding toward park improvements at King George/Cambie Community Park (King George Park). No referral on this matter has been received.

The purpose of this report is to provide Council with an update on a Parks partnership with the ICCC and outline next steps to realize park improvement projects at King George Park.

This report supports Council's Strategic Plan 2022-2026 Focus Area #1 Proactive in Stakeholder and Civic Engagement:

*Proactive stakeholder and civic engagement to foster understanding and involvement and advance Richmond's interests.*

*1.3 Increase the reach of communication and engagement efforts to connect with Richmond's diverse community.*

This report supports Council's Strategic Plan 2022-2026 Focus Area #6 A Vibrant, Resilient and Active Community:

*Vibrant, resilient and active communities supported by a wide variety of opportunities to get involved, build relationships and access resources.*

*6.2 Enhance the City's network of parks, trails and open spaces.*

*6.3 Foster intercultural harmony, community belonging, and social connections.*

### Background

The India Cultural Centre of Canada (ICCC) is a Richmond-based cultural institution that, since 1993, has been located at 8600 No. 5 Road. Its members, past and present, have a rich history of involvement in the local community, especially the Indo-Canadian community in East Richmond and East Cambie. In 2022, ICCC members engaged with Parks Services staff and expressed interest in voluntarily contributing funding toward a number of park improvement projects at King George Park.

The City of Richmond has a strong tradition of successful partnerships with community-based organizations, including volunteer and non-profit groups, through its Partners for Beautification program, among others. Recent successful Parks partnerships include: the South Arm Park playground contribution from the South Arm Community Association; the installation of table tennis tables at four City parks, including King George Park, through a partnership with the Rotary Club of Richmond; and the implementation of a StoryWalk circuit at McLean Park, through a partnership with the Richmond Public Library and the Rotary Club of Richmond Sunrise.

In February 2023, staff issued a memo to Mayor and Councillors to provide notice of an upcoming partnership between the City and the ICCC (Attachment 1). In March 2023, staff attended an East Richmond Community Association meeting to provide an update on various park initiatives, including the prospective ICCC partnership and park improvement projects, which were well received. Given the time that has passed and the scale and magnitude of potential park improvement projects (outlined in the following section of the report), this report provides an update to Council on the partnership status and next steps.

### Potential Park Improvement Projects

King George Park was established in 1939, and consists of approximately 38.6 acres (15.6 hectares) of sport fields, natural areas, and community gathering spaces. It is among the oldest, largest, and most popular parks in the City, serving residents of East Cambie and beyond. The west side of the park, near No. 5 Road, which includes a designated BBQ and picnic area, playground, and water play zone, is particularly well used. This area of the park has experienced seasonal flooding issues in recent years due to ageing drainage infrastructure, and includes a number of site furnishings and structures that have been identified as in need of an upgrade or replacement.

Since 2013, King George Park planning and design decisions have been guided by the Council-endorsed King George Park Master Plan Update (Attachment 2). This document includes a concept plan with seven focus areas, and was intended to inform park development and meet the needs of the community over the next 10 years.

Through discussions between Parks staff and the ICCC, a number of potential park improvement projects that align closely with opportunities highlighted in the King George Park Master Plan Update have been identified. They would be located on the west side of King George Park and may include:

#### *Gazebo Upgrade/Replacement*

Currently, the gazebo on the west side of King George Park serves as a BBQ shelter and gathering space. Upgrade or replacement of the existing structure would seek to create a more aesthetically pleasing and functional gathering space to anchor the park's very popular BBQ and picnic area.

#### *Landscape Improvements*

Landscape improvements at King George Park may include drainage infrastructure improvements, replacement of ageing site furnishings and related infrastructure (e.g., picnic table pads), and the creation of new accent planting areas.

#### *Tree Planting*

There are opportunities to plant new trees to improve the character and quality of the BBQ and picnic area on the west side of King George Park while contributing to goals established in the City's Public Tree Management Strategy (e.g., expanding the City's urban forest canopy coverage).

The above is a high level overview of the potential park improvement projects that the ICCC is keen to pursue, which would offer significant benefits to park users and the broader Richmond community. Preliminary order of magnitude estimates suggest that cumulatively these projects could require upwards of \$500,000 in funding. A more detailed scope of work and cost estimate will be established in a 2025 capital submission. Given the range and scale of potential projects, they are likely to be phased over a number of years, with the first phase of implementation commencing as early as Spring 2025.

### Recognition

Staff have discussed formal recognition for the prospective ICCC contributions to King George Park improvement projects. The form of recognition will adhere to Partners for Beautification program standards for voluntary contributions to park projects and be implemented following completion of the corresponding park improvement works. Consistent with the Partners for Beautification program, the recognition design parameters and text are outlined in Attachment 3. The text would be inscribed on a plaque that follows City graphic and recognition standards, to be located adjacent to the upgraded or replaced gazebo structure.

### Next Steps

Parks staff will develop a Letter of Understanding – as noted in Attachment 3 – that outlines project roles and responsibilities, and acknowledges the ICCC’s commitment to voluntarily contribute funding for King George Park improvement projects. To facilitate this partnership, Parks would contribute staff time in the form of project management and contract administration. Next steps will include preparation of a 2025 capital submission, funded by an external contribution, and an operating budget impact (OBI) estimate for Council’s consideration as part of the annual budget process. Upon Council’s approval of the capital submission as part of the Capital Budget, staff would work with the ICCC to establish a detailed scope of work, cost estimate, project phasing and procure the services of a qualified contractor, in accordance with the City’s standard Purchasing policies.

### **Financial Impact**

There are no financial impacts at this time. A capital submission for King George Park Improvements, funded by an external contribution, and an OBI will be submitted for Council’s consideration through the annual budget process.

### **Conclusion**

The City has a history of successful partnerships with volunteer and non-profit groups. The ICCC, a Richmond-based cultural organization with strong ties to the East Richmond and East Cambie communities, is eager to follow this tradition and contribute funding to King George Park improvement projects that will align with the King George Park Master Plan Update and have a significant community benefit.

A partnership with the ICCC will allow essential King George Park improvement projects to be undertaken without a financial burden on the City. It will also establish a positive relationship with a valued community partner to improve the quality of public open space in the East Cambie area and benefit the broader Richmond community.

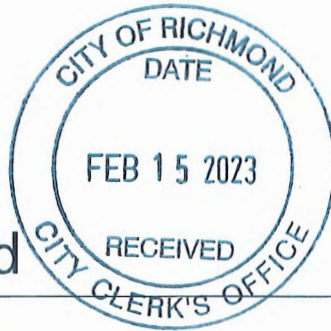


Kevin Fraser  
Research Planner 2  
(604-233-3311)

- Att. 1: 2023 MTC re: India Cultural Centre of Canada Partnership
- 2: King George Park Master Plan Update
- 3: Signed Agreement Letter from ICCC re: King George/Cambie Community Park Improvement Contributions



City of Richmond



TO: MAYOR & EACH COUNCILLOR  
FROM: CITY CLERK'S OFFICE

Attachment 1

**Memorandum**  
Community Services Division  
Parks Services

**To:** Mayor and Councillors  
**From:** Kevin Fraser  
 Research Planner 2  
 Parks Planning, Design and Construction  
 Jason Chan  
 Manager, Parks Planning, Design and Construction  
**Date:** February 14, 2023  
**File:** 06-2345-20-KGEO1/Vol 01  
**Re: India Cultural Centre of Canada Partnership**

The purpose of this memo is to update you on a upcoming partnership between the City of Richmond and the India Cultural Centre of Canada (ICCC) to deliver park improvements to King George Community Park. These improvements may include new site furnishings, landscape improvements, tree planting and gazebo upgrades.

The Partners for Beautification program offers a unique opportunity for Richmond residents, businesses, schools, youth/senior/sports groups, strata councils, associations and clubs to get involved with one or more of the adoption programs to improve the quality of our public open space. Participation can happen on many levels as the program allows individuals or groups to "adopt" a public open space and/or provide sponsorship through donations and fundraising that align with Park Planning plans and strategies.

The City has a history of collaborating with volunteer and non-profit groups. Examples of recent successful partnerships include the South Arm Community Park Playground Contribution with the South Arm Community Association, and the installation of table tennis tables at four City parks, including King George, through a partnership with the Rotary Club of Richmond.

Parks staff look forward to a successful partnership with the ICCC to implement improvements at King George Community Park. These projects are likely to be phased in over a number of years, with the first phase commencing as early as Spring 2023. Efforts requiring procurement of external services will be coordinated with the City's Purchasing Department and scheduled accordingly.

Kevin Fraser  
Research Planner 2  
Parks Planning, Design and Construction  
(604-233-3311)

Jason Chan  
Manager, Parks Planning, Design and Construction  
(604-233-3341)

pc: SMT  
Todd Gross, Director, Parks Services  
Keith Miller, Director, Recreation and Sport Services  
Egan Davis, Manager, Parks Operations  
Alex Kurnicki, Manager, Parks Programs  
David Aarons, Manager, Purchasing

PHOTOCOPIED  
FEB 15 2023  
& DISTRIBUTED



# KING GEORGE PARK

## Master Plan Update

# WHAT MAKES A GREAT PARK?

The City, together with the East Richmond Community Association, is updating the park master plan to ensure it meets the needs of the community.



# KING GEORGE PARK

## Master Plan Update

# SITE ANALYSIS



UNDERSTANDING THE ISSUES AND OPPORTUNITIES

## WHAT MAKES A GREAT PARK?

What would make King George Park a 'Great Community Park'? The City and the East Richmond Community Association want your ideas.

1. Tell us about your favourite things to do in the park and what you like about the existing park.  
\_\_\_\_\_  
\_\_\_\_\_  
\_\_\_\_\_
2. What is missing to make King George Park a great park? What needs to be improved or added?  
\_\_\_\_\_  
\_\_\_\_\_  
\_\_\_\_\_



For more information, please contact the Parks Department at (604) 244-1208 or Cambia Community Centre at cambia@richmond.ca or call (604) 233-8373.





# KING GEORGE PARK

## Master Plan Update

### A IDENTITY AND ACCESS

'ARRIVING AT THE PARK' - STREET EDGE IMPROVEMENTS

#### A. CAMBIE ROAD

This is the main 'face' or the 'front door' of King George Park. This is how many people arrive to the park and the facilities.

#### ISSUES

##### Lack of identity and information

*Where is the park? Where are the facilities?*

- Lack of signage/ information about park facilities
- Poor visibility of parking lot driveways
- Visual chaos
- Overgrown and inconsistent landscaping
- Underdeveloped major intersection corners e.g. Centre building appears to have its back to the corner



Poor visibility of park entrances



Visually chaotic



Major intersection - no signage and 'back' end of building



Overgrown and inconsistent landscaping



Lack clear of signage and information

# KING GEORGE PARK

## Master Plan Update

### B. NO. 5 ROAD

A very pleasant edge to the park and entry to some of the most popular and successful areas such as the picnic and play areas.

### ISSUES

- Limited view of the park and sense of all the park has to offer
- Lack of signage and information – where is the entrance?
- Busy and condensed vehicular traffic area
- Commercial use on corner blocks views into park

### OPPORTUNITIES/ IDEAS

#### Improve the 'sense of arrival' for visitors

- Develop a Wayfinding Signage System
- Provide clear information on parking lot entrances, building locations and amenities in the park.
- Redevelop the No. 5 Road edge with a larger and clear entry feature by the new crosswalk.
- Improve the corner of Jacombs and Cambie Road both with landscaping and potential building signage.

#### Improve visibility into the park and to the facilities

- Develop a cohesive landscaping treatment for the street edges
- Remove overgrown shrub beds that are limiting visibility
- Remove trees that have been damaged by excessive pruning for hydro lines.

#### Develop an identity or 'look' for the park

- Create a consistent and recognizable look to all the park furnishings e.g. wayfinding signage, the bollards, fences, benches and garbage cans reinforce.
- Provide interpretation- stories about the history of the area, park and people of the neighbourhood.
- Work with community and school children to create community art for the park.



Nighttime features



Treelined street



Making art in the park



Unique site furnishings



Gateway entrance features

# KING GEORGE PARK

## Master Plan Update

### B PARK AMENITIES

'GREAT PLACES AND GREAT EXPERIENCES'

#### WHAT MAKES A GREAT PARK?

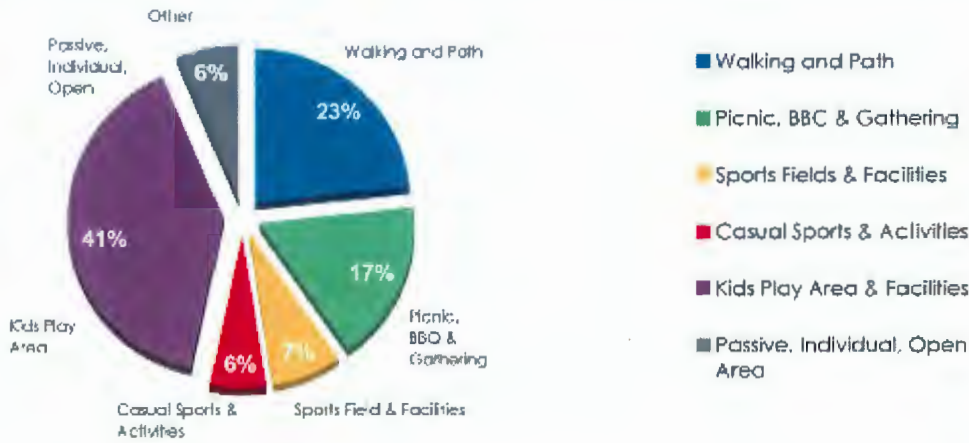
King George Park, at 48.2 acres, is one of Richmond's largest community parks acres. It is a well-used park with many amenities and building facilities on site. The goal is to 'tweak' it to make it even better!

#### HERE IS WHAT YOU SAID...

A park survey was conducted over the Spring months asking the public what would make a great park. Here are the results:

##### Question #1

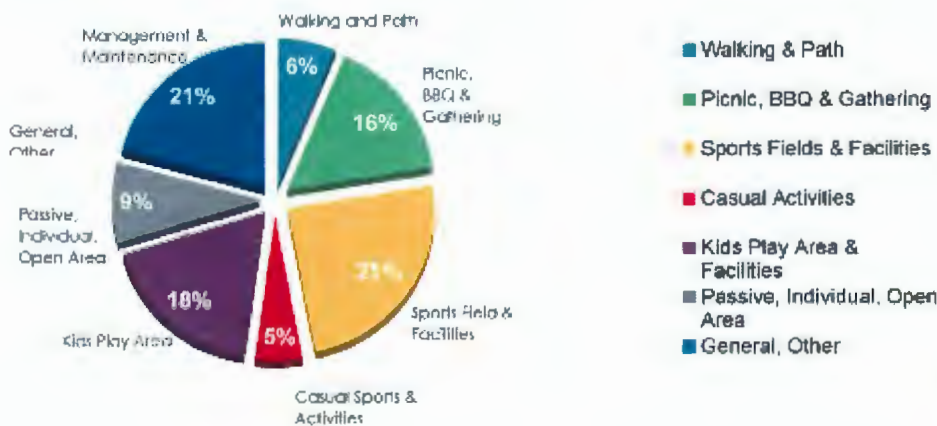
Tell us about your favourite things to do in the park and what you like about the existing park.



Gathering spaces for passive recreation

##### Question #2

What is missing to make King George Park a great Park? What needs to be improved or added?



Sport fields and facilities

# KING GEORGE PARK

## Master Plan Update

### OPPORTUNITIES / IDEAS

#### Improve the pathway system

- create a complete continuous pathway
- widen the north pathway adjacent to Cambie Road
- provide a walking map and distance markers

#### Make the park more comfortable for users

- Provide more seating areas – benches and outdoor chairs
- Provide spectator seating for the sports fields
- Provide covered areas
- Improve safety by reducing, relocating or removing overgrown shrub beds

#### Improve the picnic area/play area

- Review the number and location of picnic tables/seating areas
- Integrate the different amenities together
- Improve the drainage
- Assess the health of the trees and develop a plan for future trees
- Remove and/ or simplify the shrub borders for safety and improved aesthetics

#### Locate a ball hockey court within the park

- Review potential to retrofit one basketball court to this use

#### Improve the park for festivals and events

- Determine what infrastructure is required to support festivals or major events in the park



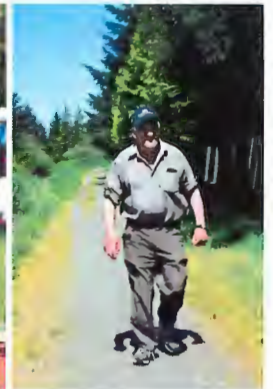
Benches and seating options



Chairs and movable furniture



Walking park paths



#### Improve the overall landscaping

- Redesign, reduce or remove shrub borders that are unsightly or a safety concern
- Work with community on adopt-a-park programs to assist with maintenance



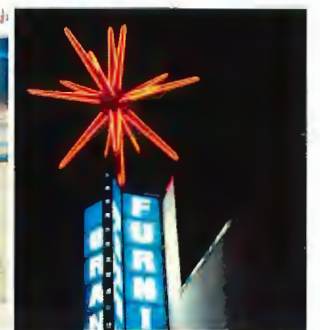
Unique play elements



Improved picnic shelter



Ball hockey court



Night features

# KING GEORGE PARK

## Master Plan Update

### C THE WOODLOT AND CAMBIE HOLLOW

'INTEGRATING NATURE INTO THE PARK'

#### THE CAMBIE HOLLOW

A small environmentally sensitive area along Cambie Road in front of the Community Centre. Pleasant with mature trees.

This is a remnant of Bath Slough and is connected to the slough across the street.

#### ISSUES

- Overgrown with invasive weeds
- Overgrown shrubs that reduce visibility to driveways and the community centre
- Underutilized area

#### OPPORTUNITIES/IDEAS

##### Environmental Enhancement Grant

- The Community Association has received money to improve the environmental quality of the hollow.
- Engage students in a clean up and replanting with native plants

##### Develop a recreational use and improve the aesthetics

- Construct a boardwalk or bridge

##### Interpret the slough connection

- Provide interpretation through signage or public art



The Hollow - Part of Bath Slough



Aerial view of Bath Slough from Cambie Road to Fraser River



Bridge over The Hollow



Interpret the original slough location



Environmental interpretation through art

# KING GEORGE PARK

## Master Plan Update

### SOUTH WOODLOT

The wood lot is a 2.2 acre site along the south edge of the park. It is a designated an environmentally sensitive area and provides a beautiful backdrop in the park.

#### ISSUES:

- Safety is the number one concern e.g. people camping or lurking
- wooded area is not maintained
- hazardous trees make it unsafe to enter
- overgrown with invasive plants
- not designated pathways through it
- overall uninviting and not well integrated into the park

#### OPPORTUNITIES/IDEAS

Turn this woodlot into a positive asset in the park by:

##### Making it safer

- opening up views into the woodlot
- improve visibility within the woodlot by selectively removing overgrown shrubs
- replant with low growing plants

##### Making it environmentally healthier

- remove invasive plants to improve the ecology of the woodlot
- remove hazardous trees
- replant with native plants

##### Adding recreational use

- built clear trails through the area
- soften the edges to make it part of the overall park



North side of woodlot



Wildlife



Invasive plants



Involving the community on Earth Day / invasive removal



Control access through woodlot



Develop wide trails



Clear trails and access



Replant with native plantings

# KING GEORGE PARK

Master Plan Update

7 FOCUS AREAS

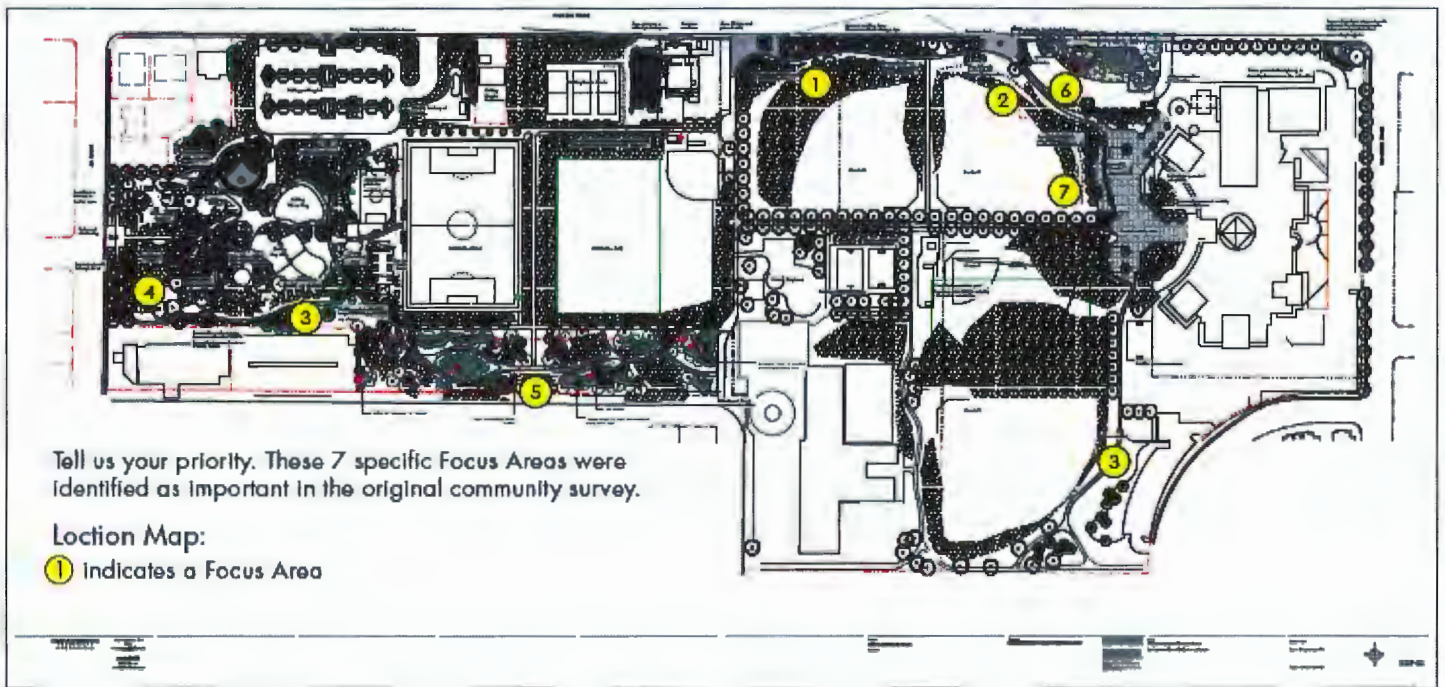
# CONCEPT PLAN 2



# KING GEORGE PARK

## Master Plan Update

### THE 10-YEAR PLAN



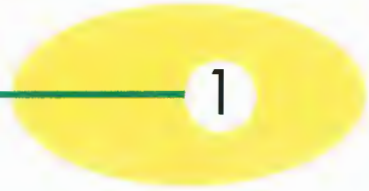


# KING GEORGE PARK

## Master Plan Update

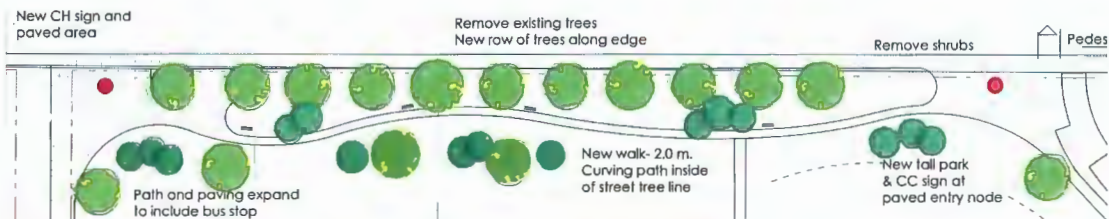
### King George Park Master Plan Update

### Edges & Identity



The two main park edges, along #5 Road and Cambie Road, are proposed to be upgraded with a more regular, urban street tree edge. This approach will give the park itself a stronger presence along the streets, and improve visibility into the park.

Vertical identity elements can be combined with custom bus shelters to add identity and interest to the park access points. Because sightlines to park access points are at very shallow angles, we believe that vertical, rather than horizontal, identity elements will be most effective.



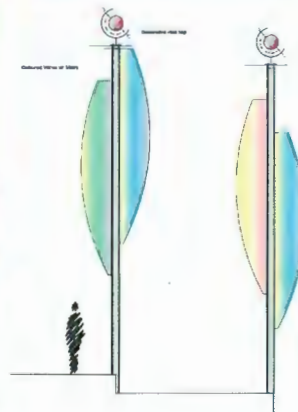
Stronger edges to park



Vertical identity elements



Custom Bus Shelter



# KING GEORGE PARK

## Master Plan Update

### King George Park Master Plan Update

### Wayfinding & Information

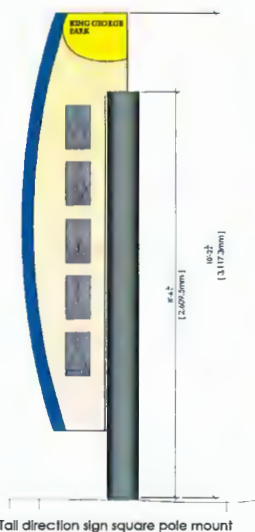
2

Three types of signs are proposed:

- \* Street Edge signs for park and facility identification, along with vehicular oriented instructions.

- \* Internal direction signs, at pedestrian arrival locations with directions to specific areas as well as overall park directions.

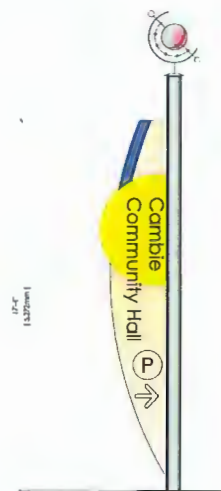
- \* Path and location markers, to note progress around the paths, and provide facility arrival identification and adjacent facility directions.



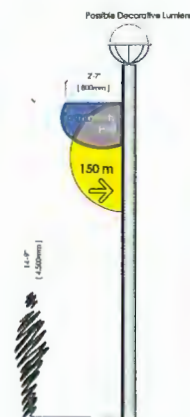
Tall direction sign square pole mount



Distance marker or place identity



Simplified Vertical Sign, Vertical Graphics



Potential Advance Notice Sign, as Modified Blade approx. 100 m Advance

Internal park direction & path markers

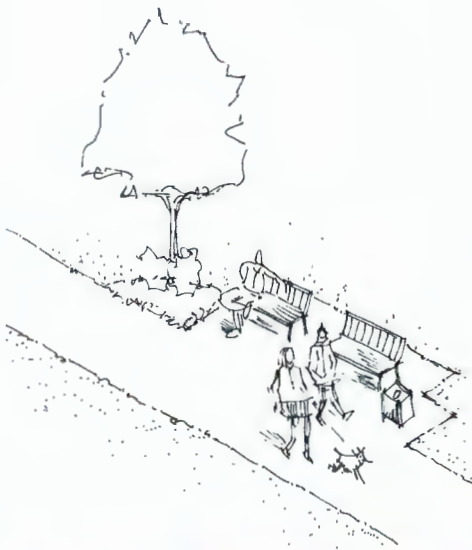
Street edge signs and advance notice signs

# KING GEORGE PARK

## Master Plan Update

### King George Park Master Plan Update Paths & Seating

3



All of the park survey responses and park-user comments show that the paths are exceptionally well used and enjoyed.

Users strongly supported the ideas of expanding the range of walking paths to extend distances and expand the range of experiences that may be found along the paths.

Users requests also showed that improved seating options, such as benches, shelters, and social table areas, would be a valuable upgrade.

The park update plan proposes expansion of the loop path, as well as widening it and adding seating and shelters.



Open trellis & bench clusters



Widen existing paths to 2m - 3m



Table groups adjacent to activity areas



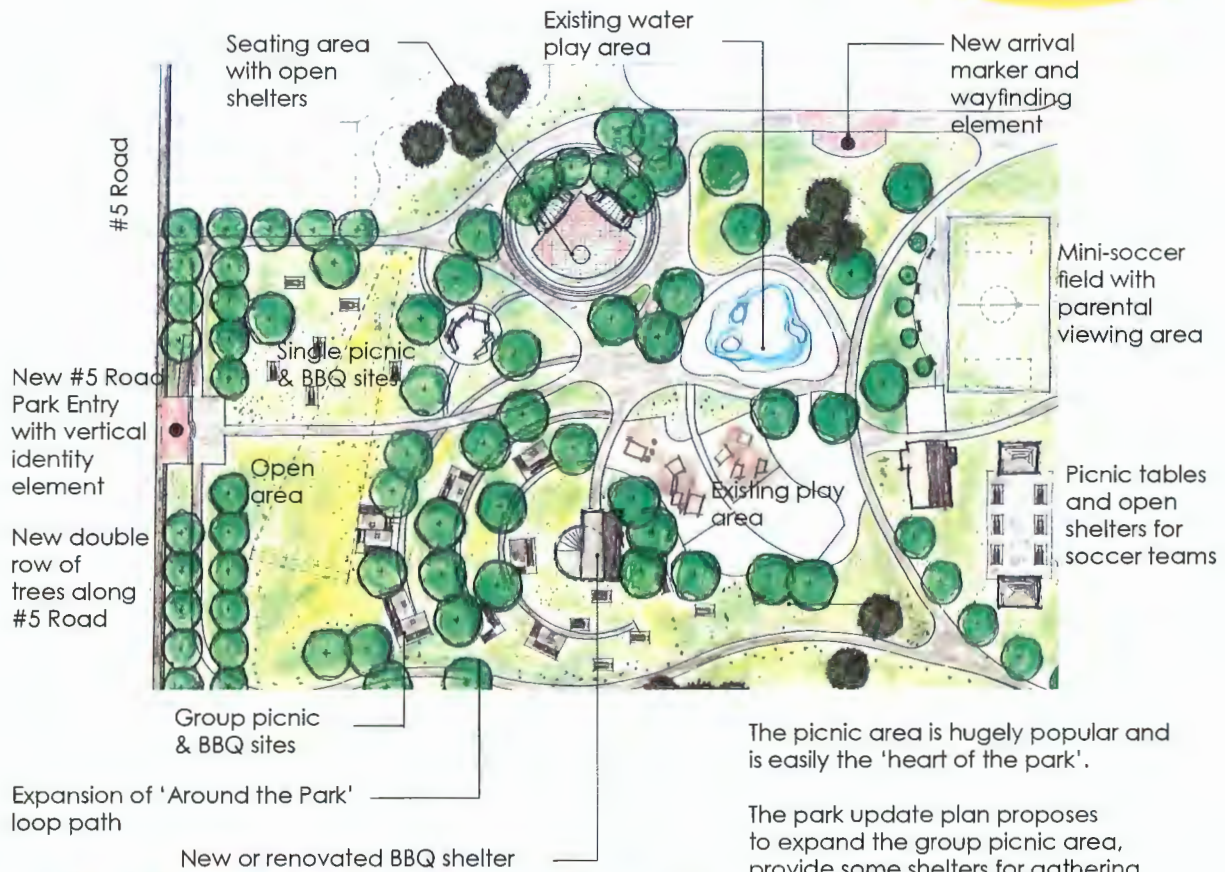
Flexible seating

# KING GEORGE PARK

## Master Plan Update

### King George Park Master Plan Update Picnic and Play Area

4



The picnic area is hugely popular and is easily the 'heart of the park'.

The park update plan proposes to expand the group picnic area, provide some shelters for gathering and seating, and add some tables and shelters for the soccer field. A new, more formal tree-lined edge will soften #5 Road, and a new park entry and pedestrian arrival node with a tall, vertical identity element will compliment the new pedestrian-operated light.



Vertical element at arrival



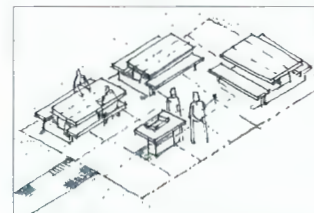
Possible BBQ shelter



Open seating shelters



Movie night space retained



Group picnic setting with BBQ stand

# KING GEORGE PARK

## Master Plan Update

### King George Park Master Plan Update Wood Lot

5



casual, curving paths



Stilt walk



log & stump walk



Creative seating options

# KING GEORGE PARK

## Master Plan Update

### King George Park Master Plan Update Cambie Hollow

6



The Cambie Hollow area is being cleaned to allow enhancement of the wet area that once was part of Bath Slough. New paths, tables and social seating areas are planned, along with gravel walks and enhanced native planting.

Visibility to the ERCA building as well as increased usability and pedestrian comfort will be achieved.



Low, native plants and small boardwalk

# KING GEORGE PARK

## Master Plan Update

### King George Park Master Plan Update ERCC Plaza

7

Between the ERCC/ High School, the update plan proposes a new multi-use plaza, that will accommodate open and covered seating areas, space for casual court games as well as provide outdoor space for the Community Centre and the school to use. The plaza will respond to the build form, and create a logical link with the elegant central tree axis of the park.



Covered seating pavilions



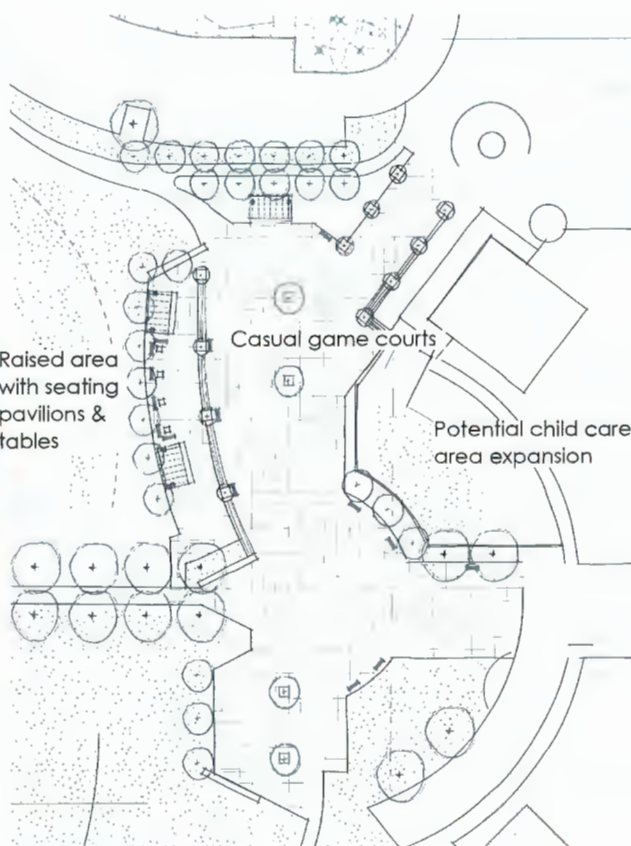
Tai chi



Casual use built-in tables



Architectural seating



# KING GEORGE PARK

## Master Plan Update

**S  
H  
E  
L  
T  
E  
R  
S**



**fun  
function**

**kg**



**PUBLIC  
ART**



**GATEWAY**



**BENCHES**





# India Cultural Centre of Canada

Gurdwara Nanak Niwas Society (Est. 1983)

Website: [www.nanakniwas.ca](http://www.nanakniwas.ca) Email: [iccc8600@gmail.com](mailto:iccc8600@gmail.com)



June 25, 2024

Attn: Todd Gross, Director, Parks Services, City of Richmond

Re: King George/Cambie Community Park Improvement Contributions

Dear Mr. Gross,

The intent of this letter is to request and establish terms for recognition within King George/Cambie Community Park following park improvement contributions from the India Cultural Centre of Canada Gurdwara Nanak Niwas Society (ICCC).

The ICCC hereby requests that the below italicized text be included on a recognition plaque mounted to a freestanding structure. It is understood and agreed upon that the plaque will be no greater than 18" x 18" in size, and that the freestanding structure may be a concrete plinth with stone cap no greater than 3' x 5' in size.

*KING GEORGE/CAMBIE COMMUNITY PARK IMPROVEMENTS*

*THE CITY OF RICHMOND HEREBY RECOGNIZES THE FUNDING COMMITMENT AND VOLUNTEER SUPPORT OF THE INDIA CULTURAL CENTRE OF CANADA.*

*THE INDIA CULTURAL CENTRE OF CANADA GURDWARA NANAK NIWAS SOCIETY WISHES TO DEDICATE THESE PARK IMPROVEMENTS TO GURU NANAK, THE FOUNDER OF SIKHISM.*

Upon endorsement from Council and ratification of this agreement, the ICCC understands that the City of Richmond will need to proceed with the following tasks:

1. Develop a Letter of Understanding – to be signed by both parties – to outline project roles and responsibilities;
2. Prepare a Capital Funding Request for 2025 with an external funding source identified; and
3. Work with the ICCC to define a scope of work, project requirements, and qualifications before proceeding with a procurement process in 2025.

Sincerely,



Fred Sidhu

India Cultural Centre of Canada Gurdwara Nanak Niwas Society