



# City of Richmond

## Report to Committee

**To:** Parks, Recreation and Cultural Services  
Committee

**Date:** November 1, 2018

**From:** Biliana Velkova  
Public Art Planner

**File:** 11-7000-09-20-244/Vol  
01

**Re:** **Hollybridge Way Public Art Landmark Concept**

### Staff Recommendation

That the concept proposal and installation for the Hollybridge Way Landmark public artwork "Typhas" by artists Charlotte Wall and Puya Khalili, as presented in the report titled "Hollybridge Way Public Art Landmark Concept," dated November 1, 2018, from the Director, Arts, Culture and Heritage Services, be endorsed.

Jane Fernyhough  
Director, Arts, Culture and Heritage Services  
(604-276-4288)

Att. 2

REPORT CONCURRENCE		
<b>ROUTED TO:</b>	<b>CONCURRENCE</b>	<b>CONCURRENCE OF GENERAL MANAGER</b>
Parks Services	<input checked="" type="checkbox"/>	
Finance	<input checked="" type="checkbox"/>	
Community Social Development	<input checked="" type="checkbox"/>	
<b>REVIEWED BY STAFF REPORT / AGENDA REVIEW SUBCOMMITTEE</b>	<b>INITIALS:</b> DW	<b>APPROVED BY CAO</b> 

## Staff Report

### Origin

On May 23, 2006, Council adopted the Oval Precinct and Surrounding Area Public Art Plan as the guiding plan for art opportunities in the Richmond Olympic Oval site and as a guideline for the Oval Village Neighbourhood.

On October 11, 2011, Council adopted the City Centre Public Art Plan as the guide for public art to complement and develop the character of Richmond's diverse neighbourhoods to create distinctive spaces and villages, which enhance a sense of community, place and civic pride.

On June 4, 2018, Council endorsed the issuance of an artist call for the Hollybridge Way Public Art Landmark, as described in the staff report titled, "Hollybridge Way Public Art Landmark Terms of Reference". The artist call provided terms of reference, including that the artists:

- consider the themes of "River and Sky" to create a sense of place and cultural identity for residents and a welcoming experience for visitors; and
- consider the ecology and the historic use of the site at the edge of the Fraser River including the traditional use of the area by Indigenous inhabitants.

The artwork may be a single integrated artwork, or series of sequential pieces, to further address the themes mentioned above.

This report supports Council's 2014-2018 Term Goal #2 A Vibrant, Active and Connected City:

*Continue the development and implementation of an excellent and accessible system of programs, services, and public spaces that reflect Richmond's demographics, rich heritage, diverse needs, and unique opportunities, and that facilitate active, caring, and connected communities.*

2.1. *Strong neighbourhoods.*

2.2. *Effective social service networks.*

2.3. *Outstanding places, programs and services that support active living, wellness and a sense of belonging.*

2.4. *Vibrant arts, culture and heritage opportunities.*

This report supports Council's 2014-2018 Term Goal #3 A Well-Planned Community:

*Adhere to effective planning and growth management practices to maintain and enhance the livability, sustainability and desirability of our City and its neighbourhoods, and to ensure the results match the intentions of our policies and bylaws.*

3.2. *A strong emphasis on physical and urban design.*

## **Analysis**

### Proposed Location

The recommended location for the Hollybridge Way Public Art Landmark is on the grand stairs, a high profile location with visibility from the dyke trail, and both Dinsmore and No. 2 Road bridges. It is the terminus for the proposed Lansdowne Road ceremonial route starting from the Garden City Lands to the Hollybridge Way plaza and Richmond Olympic Oval precinct. The location is also adjacent to primary bike and pedestrian routes from the City Centre to the waterfront park.

The site is in close proximity to the mouth of the Fraser River and to the Vancouver International Airport. The artwork will provide a gateway and a landmark for the new Hollybridge Waterfront Park and Pier, providing an opportunity for the public to experience close contact with the Fraser River. A signature artwork at this location is anticipated to attract people to gather, pose for photos and create a sense of place.

### Design Considerations Accessibility Access

The artist team and staff will work with the Richmond Centre for Disability to identify any accessibility concerns. In particular, the artist will need to consider mobility accessibility, sound, and light pollution interference.

A technical review and coordinating phase with City staff will be included with the design development phase of the work. This includes coordinating with flight path specialists as the work will be in proximity to Vancouver International Airport.

### Hollybridge Way Public Art Landmark - Terms of Reference

The Call to Artists for the Hollybridge Way Public Art Landmark describes the art opportunity, themes, site description, scope of work, budget, selection process, schedule and submission requirements. The Call was issued on July 13, 2018 and closed on August 9, 2018. Artists residing in Canada were eligible.

### Hollybridge Way Public Art Landmark - Public Art Artist Selection Process

During the first stage of the process, 45 submissions by artists from across Canada were received. On August 23, 2018, following the Public Art Program's administrative procedures for artist selection for civic public art projects, a selection panel comprised of four Richmond residents and arts professionals and one Vancouver-area arts professional reviewed the submissions.

Members of the selection panel included:

- Dr. Cheryl Angelomatis, retired University professor and resident of adjacent development
- Sloane Elphinstone, recreation programmer;
- Sunshine Frère, arts and culture administrator;

- James Harry, artist; and
- Debra Zhou, art professional.

City staff from the Public Art Program and Parks Planning attended the selection panel meeting to provide project background for the selection panel and to address technical questions.

In reviewing the submissions, the selection panel considered how the proposal responded to the themes identified in the artist call and the potential to create a compelling work of art as evidenced in the samples of past projects provided by the applicants.

These criteria included:

- artistic merit of the artist statement;
- understanding of the relevance of the site and its histories;
- ability of the artwork to respond to the existing character of the site;
- appeal to multiple audiences;
- sensitivity of environmental concerns; and
- qualifications based on past projects.

Following discussion and deliberation, the panel shortlisted four artists and artist teams to develop their initial approach to the project and present a concept proposal in an interview with the selection panel.

The shortlisted artists were:

- Charlotte Wall and Puya Khalili, Vancouver, BC;
- Adad Hannah, Burnaby, BC;
- Ludovic Boney, Lévis (Saint-Romuald), QC;
- Nancy Chew and Jacqueline Metz, Vancouver, BC.

As per the terms of reference, the preliminary concept proposals by the four shortlisted finalists responded to the theme of “River and Sky”. The theme provided an opportunity for the artwork to provide a connection for the public to the Fraser River. The four proposals represented a wide range of styles and materials, from colourful, whimsical approaches to meditative contemplations on the environmental history of the site.

The selection panel provided recommendations for the shortlisted artists to consider in advancing their concept proposals, including identifying technical concerns.

The artists attended site orientation with staff on September 20, 2018 and refined their concept proposals for submission to the City by October 11, 2018. City staff reviewed the proposals for technical concerns and provided comments. These comments were considered by the selection panel prior to its final recommendation.

On October 18, 2018, the selection panel met to interview the four shortlisted artists and artist teams. Following lengthy and thoughtful deliberation, the panel recommended the concept proposal “Typhas” by artists Charlotte Wall and Puya Khalili. The selection panel was impressed with the artists’ concept and its ability to infuse creative expression through symbolic and sculptural representation of the river ecology, as well as for its integration with the site.

### Recommended Artist

The artists, Charlotte Wall and Puya Khalili, have extensive public art experience. The artists have worked on a series of high profile projects in Metro Vancouver. Their unique artworks are intricately fabricated and have attracted positive community response.

### Recommended Public Art Concept Proposal

The concept “Typhas” is composed of three main sculptural forms that resemble cattails and five functional seating elements with a sound component. Together they provide a visual and sensorial experience for the public and create a distinct visual landmark for the site. Attachment 2 provides detailed information about the proposal.

The artist describes the artwork as follows:

*“The work is a symbolic re-imagining of the typha plant. These abstracted forms will be composed as three sculptures. They will be cast in stainless steel with the outer surface polished to a mirror finish. The reflective nature of the material provides a surface that not only acts as a focal point to this plaza, but one that will animate its surroundings.*

*The inner surfaces will be powdercoated in a golden yellow colour. The surface of the main flower will feature perforations that mimic cellular structures which gradually open. The hollow interior space will be illuminated at night. The forms are surrounded by five seats. Scattered at the base of the sculpture, the shape of these seats mimic the perforations found on the main sculptures and are painted to match the yellow color of the flowers.”*

### **Financial Impact**

There will be no financial impact.

The funding for the public artwork is available from the previously approved Oval Precinct Public Art Capital Budget. The total budget for the Hollybridge Way Public Art Landmark project is \$320,000. An allowance of \$20,000 has been set aside for all associated administration and coordination costs associated with the selection process and project administration. The remaining budget of \$300,000 will be available for all design costs, engineering fees, fabrication, installation, taxes and other associated costs to deliver a completed artwork integrated with the site.

### **Conclusion**

The Hollybridge Way Public Art Landmark Public Artwork supports the Oval Precinct and Surrounding Area Public Art Plan to include an integrated artwork in the new Hollybridge Way

November 1, 2018

- 6 -

Park. A major artwork at this landmark location that celebrates “River and Sky” provides an opportunity to reveal the connection of Richmond to the Fraser River estuary and Pacific flyway. Hollybridge Way Landmark public artwork will enhance this culturally and ecologically rich place and contribute in making a vibrant, healthy and sustainable city.



Biliana Velkova  
Public Art Planner  
(604-247-4612)

- Att. 1: Call to Artists - Hollybridge Way Public Art Landmark
- 2: TYPHAS – A Public art proposal from Charlotte Wall and Puya Khalili for Hollybridge Way Public Art Landmark

# call to artists

PUBLIC ART  
RICHMOND



Figure 1. Approach to Hollybridge Way Park staircase from the south east

**Hollybridge Way  
Public Art  
Landmark**  
City of Richmond, BC

**Request for  
Qualifications  
(RFQ)**

**June 2018**

## **OPPORTUNITY**

The Richmond Public Art Program, in partnership with the Parks Department, is seeking an artist or artist team to create a site-responsive landmark artwork for the new entrance plaza at the Hollybridge Way Waterfront Park located adjacent to the rapidly developing Oval Village, in Richmond, BC.

This is a two-stage open artist call. Following review by the selection panel of the submitted artists' statements of interest and their qualifications, up to five artists will be shortlisted and invited to attend a site orientation and prepare a concept proposal for presentation at an interview. An interview and concept proposal fee of \$2,000.00 CDN plus GST will be paid to each of the shortlisted artists or artist teams, plus travel expenses to a maximum of \$1,000.00.

**Budget:** The total artwork budget is \$300,000 CAD, for all design, consultants, fabrication, installation, documentation and all associated costs.

**Technical Limits:** Maximum weight of 8,000 kg (4 tons) and maximum height of 6 m (20 ft.)

**Eligibility Requirements:** Open to professional artists and artist teams residing in Canada. Indigenous artists are encouraged to apply.

**Deadline for Submissions:** Thursday, August 9, 2018, 4:00 p.m. PDT

**Installation:** Summer 2019

5903368

# call to artists

PUBLIC ART  
RICHMOND

## LOCATION

The location for the Hollybridge Way Public Art Landmark on the grand stairs is a high profile location with visibility from the dyke trail, and both Dinsmore and No. 2 Road bridges. It is the terminus for the proposed Lansdowne Road ceremonial route starting from the Garden City Lands to the Hollybridge Way plaza and Olympic Oval precinct. The location is also adjacent to primary bike and pedestrian routes from the City Centre to the waterfront park. See Appendices 1–3.

The site is in close proximity to the mouth of the Fraser River and to the Vancouver International Airport. The artwork is to provide a gateway/landmark for the new Hollybridge Waterfront Park and Pier, an opportunity for the public to experience close contact with the Fraser River.

A signature artwork at this location is anticipated to attract people to gather, pose for photos and create a sense of place.

## BUDGET

The total budget for this project is \$300,000 CAD. The budget includes (but is not limited to) artist fees, design, permitting as needed, engineering fees, fabrication, installation, administration, photography, insurance and all taxes (GST excluded). Travel to Richmond and/or accommodation for the duration of the artist's contract for the commission is at the artist's expense.

## ARTIST ELIGIBILITY

This opportunity is open to artists or artist teams residing in Canada. In consideration of the historic significance of the site to Coast Salish peoples, Indigenous artists are encouraged to apply. Qualified artists will have proven experience developing artworks, specifically for civic projects. City of Richmond staff and its Public Art Advisory Committee members, selection panel members, project personnel, and immediate family members of all of the above are not eligible. Richmond-based artists are urged to consider this opportunity.

Artists that are currently under contract with the City in a public art project are ineligible for other projects until the current contract is deemed complete.

## THEMES

In setting themes for the Hollybridge Way Public Art Landmark, artists are to consider previous Civic Public Art Plans for this neighbourhood.

The *Richmond City Centre Public Art Plan* (Figures 2 and 3) identifies **Richmond: Yesterday, Today and Tomorrow** as the thematic framework within which artists will design their work, telling a cohesive story about Richmond while allowing room for artistic expression and diverse projects.

The *Richmond Olympic Oval Precinct Public Art Plan* (Figure 4) has identified **Flow, Flight, Fusion** as the theme for the architecture and artwork within the Oval Village neighbourhood, joining the physical site context with the spirit of Olympic speed skating and the legacy health and wellness centre.

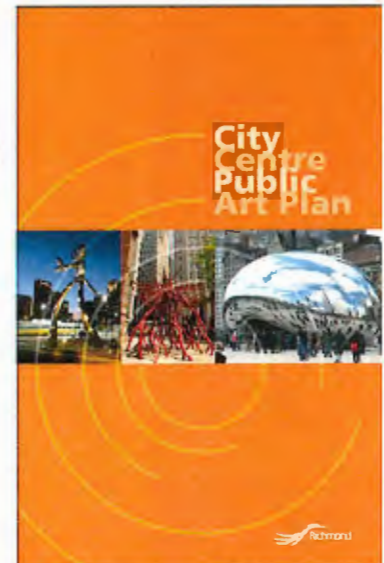


Figure 2. Cover of the City Centre Public Art Plan

Link: [City Centre Public Art Plan](#)



Figure 3. Enhanced Gateways map from the City Centre Public Art Plan. The Hollybridge Way is located between Gateways A and B as shown on the map.



# call to artists

PUBLIC ART  
RICHMOND

Building on these overarching themes of *Richmond: Yesterday, Today and Tomorrow* and *Flow, Flight, Fusion*, the theme of *River and Sky* has been identified for the Hollybridge Way Public Art Landmark opportunity.

## River

- The artwork will provide a gateway/landmark for the new Hollybridge Way Waterfront Park and Pier, an opportunity for the public to experience close contact with the Fraser River.
- The art project should consider the natural ecology of the Fraser River and ecological network.
- The waters of the Fraser River conceal a diverse and significant aquatic habitat. Richmond's unique position at the mouth of the Fraser River means the City has a key role to play in ensuring the health of the foreshore, for the benefit of the entire watershed.
- The artwork should also consider the historic use of the riverfront site—including recognition of the Coast Salish people who fished, hunted, trapped and gathered on the site for thousands of years—and the transformation of the marshy lands in the Fraser River for agriculture and industry.

## Sky

- In addition to the contemporary use of the skies for the Vancouver International Airport, the Fraser River estuary has long provided essential resting areas for migratory birds on the Pacific Flyway – a major migratory route for birds travelling between the western Arctic and southern areas of the continent of South America.
- The estuary supports the largest overwintering population of birds in all of Canada, at certain times of the year playing host to millions of birds.

The artwork may be a single integrated artwork, or series of sequential pieces, to further address the themes mentioned above.

## SELECTION PROCESS

A selection panel will recommend the artist/artist team to Council through a two-stage open call process. A concept proposal fee of \$2,000 will be paid to each of the shortlisted artists or artist teams. Expense for travel and lodging will be provided to a maximum of \$1,000 per artist or artist team residing outside of Greater Vancouver.

Out-of-town finalists will be reimbursed for travel and lodging expenses to attend the interview in Richmond. If applying as a team, the allowance for travel may not fully reimburse all team members.

A selection panel comprised of three art or design professionals and two representatives from the City Centre neighbourhood will review the applicants' materials. Representatives from the City Parks and Recreation Department



Figure 4. Richmond Olympic Oval Precinct Public Art Plan, 2006

Link: [Richmond Olympic Oval Public Art Plan](#)

# call to artists

PUBLIC ART  
RICHMOND

and Engineering Department will serve as advisors to the panel. Based on the selection criteria listed below, the panel will select up to five finalists to develop their concept proposals and attend an interview.

## Stage 1

- Artists submit a written Statement of Interest, Approach to the Site and their Qualifications in the format outlined in the Submission Requirements below.
- Selection Panel to shortlist three to five artists or teams for Stage 2.

## Stage 2

- Shortlisted artists enter into an Agreement with the City to prepare a Detailed Concept Proposal based on their initial Approach.
- Artists to be provided with detailed site information and responses to questions about the site from City staff.
- Shortlisted artists to attend an interview (in-person or via Skype) with the Selection Panel to present a Detailed Concept Design.
- Selection Panel to recommend one artist or artist team to City Council for endorsement. Panel reserves the right to make no recommendations from the submitted applications and artist interviews.

## ARTIST SELECTION CRITERIA

Submissions to the call (for Stage 1 and Stage 2, as appropriate) will be reviewed and decisions made based on the following:

- Artistic merit of artist statement of interest.
- Appropriateness of approach to the site and viability of preliminary ideas.
- Understanding of the relevance of the site and its histories.
- Ability of the artwork to respond to the existing character of the site by taking into account scale, colour, material, texture, content and the physical characteristics of the location.
- Potential for making engaging artwork, suitable for multiple audiences.
- Sensitivity to environmental concerns.
- Qualifications as demonstrated by creativity and quality of previous work and experience with projects in the public environment.
- Willingness and capacity to work with other design professionals and stakeholders through a complex process.
- Appropriateness of the proposal to the City of Richmond's [Public Art Program Goals](#).

## SUBMISSION REQUIREMENTS

E-mail all documentation as one (1) PDF document, portrait format, not to exceed a file size of 5 MB to: [publicart@richmond.ca](mailto:publicart@richmond.ca)

- INFORMATION FORM – Please complete the information form attached to this document.

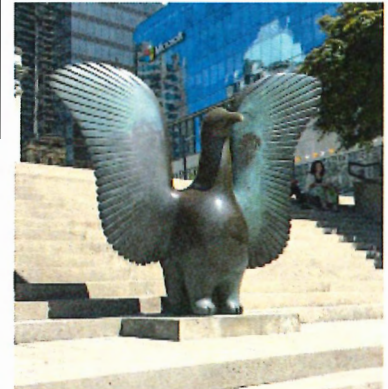


Figure 5. *Bird of Spring*, Abraham Etungat, bronze, 1979, Robson Square, Vancouver

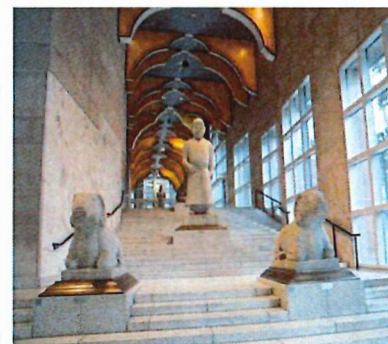


Figure 6. *Chinese Statues*, Seattle Art Museum, Photo credit: Julia Vitullo-Martin

Examples of artwork integrated with a public ceremonial staircase.

# call to artists

PUBLIC ART  
RICHMOND

- STATEMENT OF INTEREST – (300 words or less) Why the artist/team is interested in this opportunity and how their practice relates to this project and the posted selection criteria. If applying as a team, please address how team members work together in the statement of interest.
- APPROACH TO THE SITE – (1 page maximum) Text and/or visual preliminary artistic approach or working methodology stating how you propose to respond to the posted themes and site context.
- ARTIST CV – (2 pages maximum) Current professional resume. Teams should include two-page resumes for all members as one document
- DIGITAL IMAGE WORK SAMPLES – Applicants may submit up to 12 supporting image examples of past work that best illustrate their qualifications for this project. If applying as a team, the team submits no more than 12 images, total. One image per page. Please include artist name(s), title, year, location and medium information on each image page in portrait format.
- REFERENCES – Three (3) references who can speak to your abilities, skills and accomplishments. Please provide name, title and contact telephone number and/or e-mail.

## PROJECT TIMELINE

<b>Submission Deadline:</b>	Thursday, August 9, 2018, 4:00 p.m. PDT
<b>Finalist Notifications:</b>	Thursday, August 30, 2018
<b>Shortlisted Artist Interviews:</b>	Thursday, October 18, 2018*
<b>Installation:</b>	Summer 2019

\*All applicants are asked to reserve this date on their calendars.

## SOURCES FOR ADDITIONAL INFORMATION

[Richmond Public Art Program](#)

[City Centre Public Art Plan](#)

[Richmond Olympic Oval Public Art Plan](#)

[City of Richmond Archives](#)

## SUBMISSION GUIDELINES

1. All supporting documents must be complete and strictly adhere to these guidelines and submission requirements (above) or risk not being considered.
2. All submissions must be formatted to 8.5 x 11 inch pages, portrait format.
3. Submission files must be 5 MB or smaller.
4. If submitting as a team, the team should designate one representative to complete the entry form. Each team member must submit an individual resume/curriculum vitae. (See Submission Requirements)
5. All documents must be sent by e-mail to: [publicart@richmond.ca](mailto:publicart@richmond.ca)

5903368

# call to artists

PUBLIC ART  
RICHMOND

## ADDITIONAL INFORMATION

1. The selected artist will be required to show proof of WCB coverage and \$5,000,000 general liability insurance.
2. Please be advised that the City and the selection panel are not obliged to accept any of the submissions and may reject all submissions. The City reserves the right to reissue the Artist Call as required.
3. All submissions to this Artist Call become the property of the City. All information provided under the submission is subject to the Freedom of Information and Protection of Privacy Act (BC) and shall only be withheld from release if an exemption from release is permitted by the Act. The artist shall retain copyright in the concept proposal. While every precaution will be taken to prevent the loss or damage of submissions, the City and its agents shall not be liable for any loss or damage, however caused.
4. Submissions must be received by Thursday, August 16, 2018, 4:00 p.m. PDT. Extensions to this deadline will not be granted under any circumstances. Submissions received after the deadline and those that are found to be incomplete will not be reviewed.

## QUESTIONS

Please contact the Richmond Public Art Program:

Tel: 604-204-8671

E-mail: [publicart@richmond.ca](mailto:publicart@richmond.ca)

## SUBMISSION DEADLINE

Thursday, August 9, 2018, 4:00 p.m. PDT

## SUBMISSION ADDRESS

[publicart@richmond.ca](mailto:publicart@richmond.ca)

# call to artists

PUBLIC ART  
RICHMOND

## APPENDIX 1 HOLLYBRIDGE WAY PUBLIC ART LANDMARK LOCATION

Situated in the Oval Village in Richmond City Centre, the site is a highly visible location on the Middle Arm of the Fraser River, between the No. 2 Road and Dinsmore Bridges that connect Lulu Island with Sea Island (Figure 7).

The artwork will be located at the north end of Hollybridge Way and integrated into the wide “ceremonial” staircase that leads to the new Hollybridge Way Park and Pier. It will provide an entry into the Oval East Waterfront Park and be highly visible to vehicle and pedestrian traffic along River Road and on the Dinsmore and No. 2 Road Bridges (Figure 8).



Figure 7. Aerial view of proposed artwork location

# call to artists

PUBLIC ART  
RICHMOND

The Hollybridge Way Plaza and future pier mark the intersection of the new park with the north end of Hollybridge Way and will become the park's defining feature. The plaza is composed of an upper area on top of the dike that is designed to provide a gathering spot beside the river, host community events and gatherings, and provide access to the pier once it is constructed.

A lower area at Hollybridge Way will provide a clearly defined entry into the park. Linking the two plazas is a wide "ceremonial" staircase that will also serve as an amphitheatre for community events when Hollybridge Way is temporarily closed. Barrier-free access is provided, in part, by the adjacent dike maintenance service road.

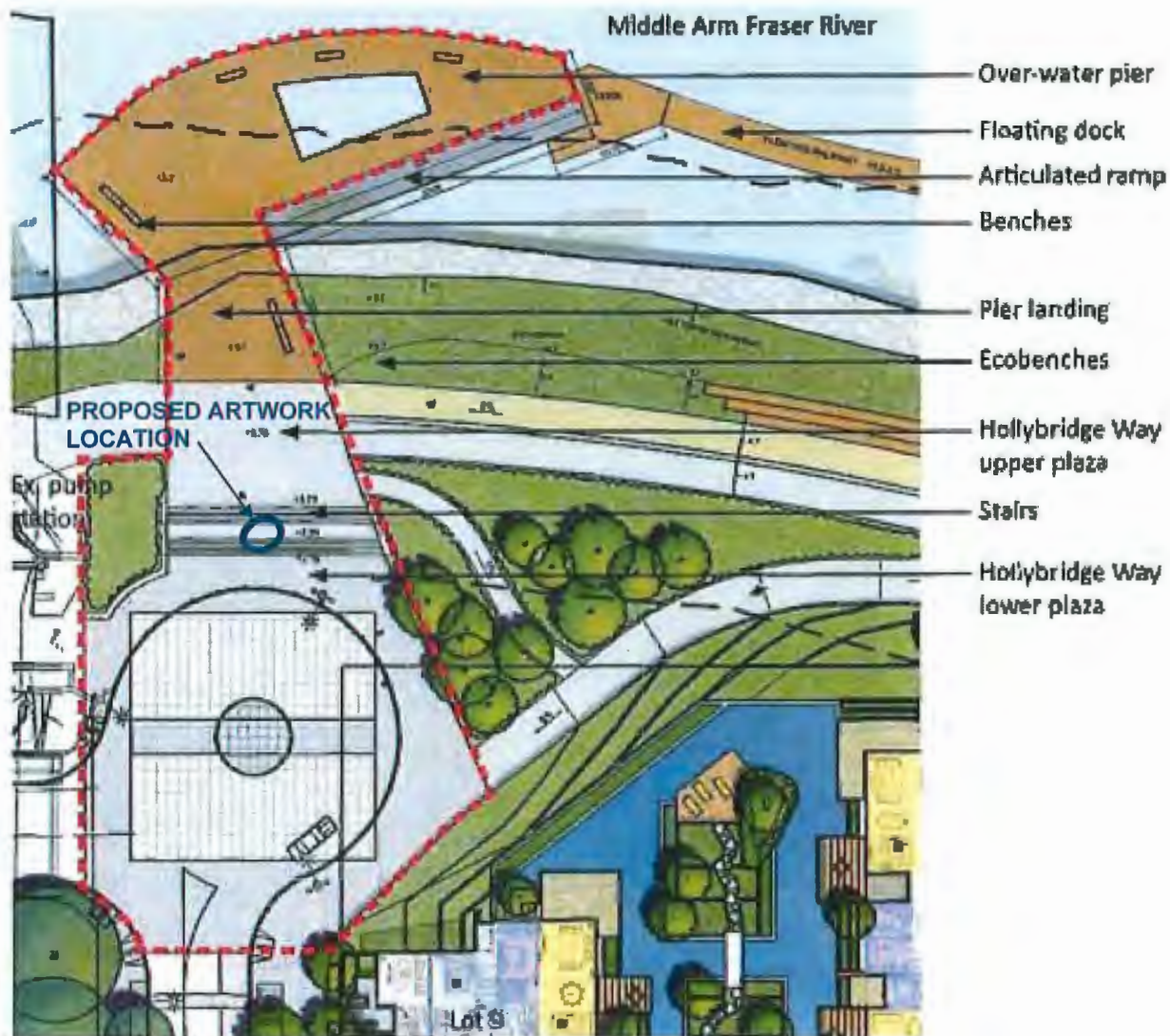


Figure 8. Hollybridge Way Plaza and Future Pier

# call to artists

PUBLIC ART  
RICHMOND

## APPENDIX 2 VIEWS OF THE HOLLYBRIDGE WAY PUBLIC ART LANDMARK LOCATION



Figure 9. View looking north

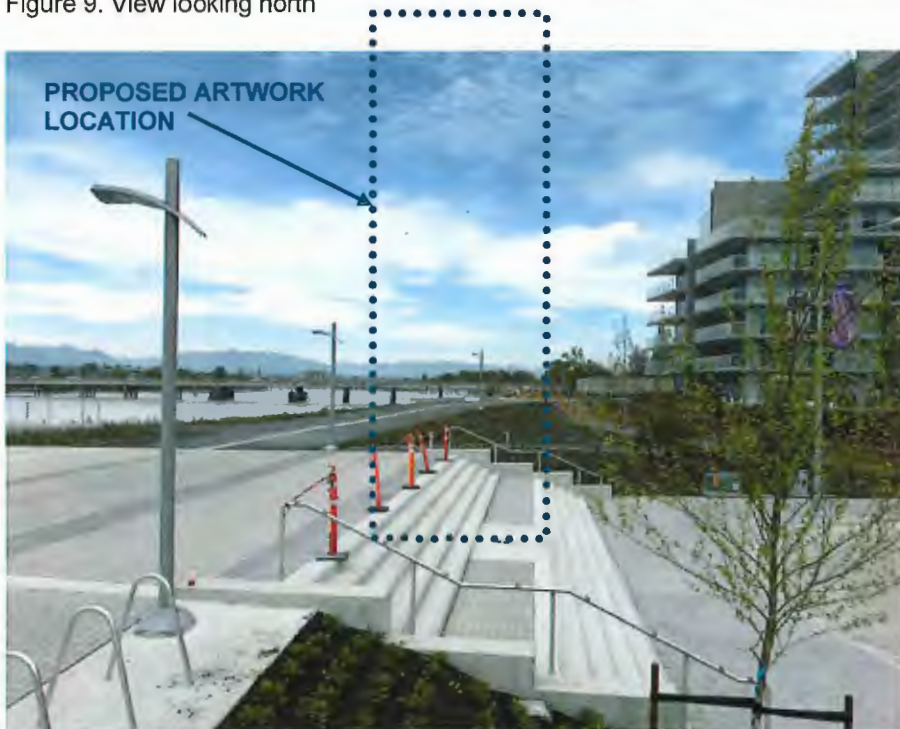


Figure 10. View looking west

5903368

# call to artists

PUBLIC ART  
RICHMOND

## APPENDIX 3 TECHNICAL DRAWINGS

Maximum weight of 8,000 kg (4 tons) and 6 m height (20 ft.)

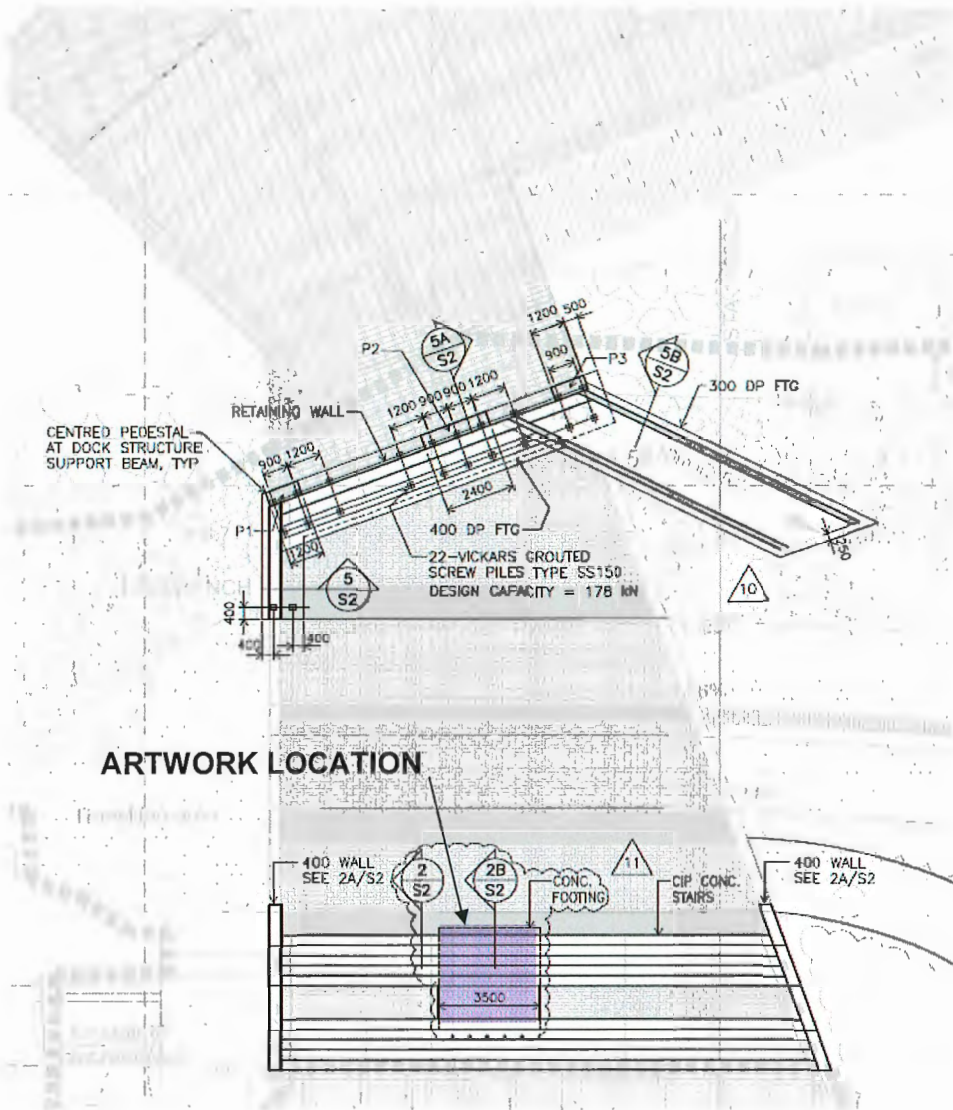


Figure 11. Waterfront Park partial Plan – concrete pedestal on upper stairs





# call to artists

PUBLIC ART  
RICHMOND

## Hollybridge Way Public Art Landmark

Attach one (1) copy of this form as the first page of the submission.

Name: \_\_\_\_\_

Team Name: (if applicable) \_\_\_\_\_

Address: \_\_\_\_\_

City: \_\_\_\_\_ Postal Code: \_\_\_\_\_

Primary Phone: \_\_\_\_\_ Secondary Phone: \_\_\_\_\_

e-mail: \_\_\_\_\_ Website: \_\_\_\_\_  
(One website or blog only)

**Incomplete submissions will not be accepted. E-mailed submissions over 5 MB will not be accepted. Information beyond what is listed in the checklist will not be reviewed.**

List Team Member Names: (Team Lead complete above portion)

\_\_\_\_\_  
\_\_\_\_\_

Please let us know how you found out about this opportunity:

\_\_\_\_\_  
\_\_\_\_\_

Would you like to receive direct e-mails from the Richmond Public Art Program?  Yes  No

Signature: \_\_\_\_\_ Date: \_\_\_\_\_

Submit applications by e-mail to: [publicart@richmond.ca](mailto:publicart@richmond.ca)

### Additional Information

Please be advised that the City and the selection panel are not obliged to accept any of the submissions and may reject all submissions. The City reserves the right to reissue the RFQ as required. All submissions to this RFQ become the property of the City. All information provided under the submission is subject to the Freedom of Information and Protection of Privacy Act (BC) and shall only be withheld from release if an exemption from release is permitted by the Act. The artist shall retain copyright of the submitted documents. While every precaution will be taken to prevent the loss or damage of submissions, the City and its agents shall not be liable for any loss or damage, however caused.



# TYPHAS

---

A Public art proposal from Charlotte Wall and Puya Khalili  
for Hollybridge Way Public Art Landmark

October 2018

**Typha** \ˈtɪfə\ n.

A genus of tall erect herbs that occur in fresh and salt marshes and have sword-shaped leaves and monoecious flowers in dense spikes with the staminate uppermost.

Also known as: Reed, bulrush, Cattail

## CHARLOTTE WALL - PUYA KHALILI

**We are passionate about art; especially art that is created for the public realm.**

Based on our different backgrounds, ethnicities and professional experience, we bring a unique paradigm to our work.

Our lives have touched the areas of literature, music, education, immigration, and design and we have developed particular sensibilities from them all.

Approaching the work from several disciplines of visual art, design and architecture, we are able to create multi-faceted and provocative art.

Working in the realm of public art is a privilege and our very best efforts are the result.

**“THE FUNCTION  
OF ARTWORK IS  
THE STIMULATION  
OF SENSIBILITIES,  
THE RENEWAL  
OF MEMORIES  
OF MOMENTS OF  
PERFECTION.”**

— AGNES MARTIN

## Intro

# TYPHAS

The story of a place begins with its flora and fauna. The riverbanks of British Columbia have always been home to indigenous water reeds. The typha has ancient origins, existing in these marshes long before the presence of any human inhabitants.

The ubiquitous presence of the typha is a prominent feature of the vegetation in Richmond. It's presence is largely dependant on water and looking out to the landscape, one could easily trace the path of water by following where the typha grows. Closely tracing the meandering river beds and streams of water, the typha can be read as a signifier for the existence of water in the landscape.





**CNCL - 148**

## THE ESSENCE OF PLACE

**To speak eloquently of a particular place, both the sights and the sounds of the place need to be addressed.**

Creating a dynamic art piece in this vibrant yet serene environment requires us to embrace the essence of this place: the sights and sounds that have constituted it throughout time.

The essence of this place then, is the result of the interplay of elements throughout time: the water, vegetation, wildlife and human inhabitants, each playing their role and creating the ultimate cause and effect.

With this sculpture, we hope to incorporate such elements that have formed this landscape through time, and encourage curiosity, playfulness, and a strong 'sense of place'.







## THE SINGING TYPHAS

With this piece we are primarily engaging the senses of sight and sound in the material world but are also hoping to engage a more subconscious state of mind that reaches for remembrances and feelings of connectedness.

This artwork is composed of a soundscape and a sculptural element.

*We are evoking the essence of a particular place in time unlimited.*



CNCL - 154

## THE SCULPTURES

**The sculptural component is a symbolic re-imagining of the typha plant.**

These abstracted forms will be composed as three sculptures. They will be cast in stainless steel with the outer surface polished to a mirror finish.

The reflective nature of the material provides a surface that not only acts as a focal point to this plaza, but one that will animate its surroundings.

The inner surfaces will be powder-coated in a golden yellow colour. The surface of the main flower will feature perforations that mimic cellular structures which gradually open. The hollow interior space will be illuminated at night.

The forms are surrounded by five seats. Scattered at the base of the sculpture, the shape of these seats mimic the perforations found on the main sculptures and are painted to match the yellow color of the flowers.





## Proposal

### SOUND

Recognizing the proliferation of water in and around Richmond, we chose to release the sounds of the subterranean water that remains unheard under normal circumstances. We are aiming to give voice to that unheard sound. This voice will speak of the waters that once were part of the river but now are underground.

The sound of the subterranean water will be heard from the speakers placed inside of the seating, mingling with the above ground sounds, including birds, boats, animals and people situated around the Typhas.



## LIGHTING

Lighting is an important aspect of this piece. LED lights will be installed inside of the three main flowers such that the gold inside will glow softly on the exterior. Ground based lighting will be used to illuminate the sculpture at night in order to create a glowing effect to the work; providing visibility and a welcoming beacon to the space. This includes soft lighting at the recessed base of the seatings, giving each a floating feeling.



CNCL - 160



CNCL - 161



## FORM - FABRICATION

The three forms are created digitally allowing for the complex geometry of the flowers to be realized.

Through 3-dimensional fabrication techniques, the digital model is prototyped as a 1:1 form. This model is then used as a positive for the casting in stainless steel. The exterior of the form is polished to a mirror finish and the interior will be powder-coated in a golden hue.

The seating elements will also be powder-coated in a matching soft golden yellow.





Original digital model and visualization



3D Model converted to Styrofoam



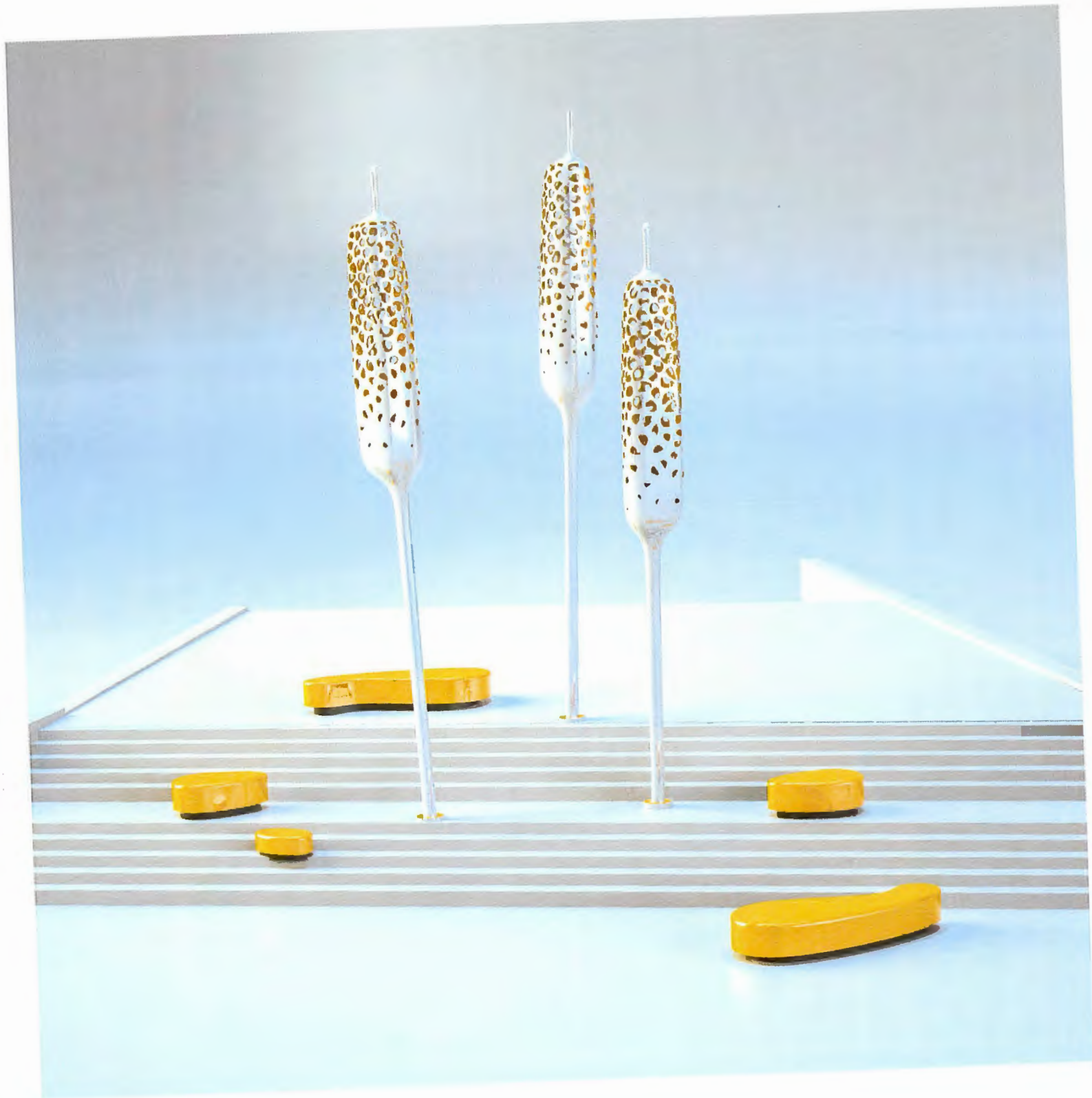
Snapshot of the installation Process



Snapshot of Finished Model



**CNCL - 165**



CNCL - 166

## **TEAM**

ARCHITECTURAL DESIGN CONSULTANT:

**CHRIS DORAY STUDIO INC.**

STRUCTURAL ENGINEERING CONSULTANT:

**GLOTMAN SIMPSON CONSULTING ENGINEERS**

© COPYRIGHT 2018 - ALL RIGHTS RESERVED TO CHARLOTTE WALL AND PUYA KHALILI