



---

**Waterworks and Water Rates Bylaw No. 5637,  
Amendment Bylaw No. 8153**

The Council of the City of Richmond enacts as follows:

1. That section 1 of Bylaw No. 5637 be amended by deleting the definition for “Temporary Disconnection”, and by substituting the following:

**“TEMPORARY DISCONNECTION** means the disconnection of a service pipe at a property line for a short term during which time building or structures on the premises served are demolished and new buildings or structures are constructed, other than a service pipe that is less than 25 mm in diameter or a service pipe that is older than 25 years.”

2. That paragraph (b) of section 4 of Bylaw No. 5637 be amended by deleting the paragraph in its entirety and by substituting the following:

“(b) Where an application for a building permit has been made:

- i. for works having a value of \$75,000 or greater; or
- ii. where the existing water service pipe between the City stop at the main and the curb stop at the property line

A. was installed more than 25 years ago; or

B. is less than 25 mm in diameter;

a new water meter service shall be installed by the **City** at the owner’s expense, in accordance with the Water Connection Fees set out in Schedule “D”.”

3. That paragraph (c) of section 6 of Bylaw No. 5637 be amended by deleting the paragraph in its entirety and by substituting the following:

“(c) A meter on a new connection shall not encroach upon a sidewalk or driveway.”

4. That paragraph (b) of section 10 of Bylaw No. 5637 be amended by deleting the paragraph in its entirety and by substituting the following:

“(b) Every owner shall locate the service box and or meter box at finished ground level and clear of any structure, driveway, curb or sidewalk.”

- 5. That section 31 of Bylaw No. 5637 be amended by deleting the clause in its entirety and by substituting the following:  
 "31. Customers depending on a continuous and uninterrupted supply of water or having processes or equipment that require particularly clear or pure water may provide such emergency storage, over-size piping, pumps, tanks, filters, pressure regulators, check valves, additional service pipes, or other means for a continuous and adequate supply of water suitable to their requirements, in accordance with any requirements of a Plumbing Permit issued by the City under its Building Regulation Bylaw."
- 6. That section 37.1 of Bylaw No. 5637 be amended by:
  - (a) in clause (d) deleting the figure '\$62.00', and by substituting the figure, '\$65.00'; and
  - (c) by adding the following as clause (e),  
 "(e) Owners of a private fire hydrant shall arrange for and ensure servicing of the fire hydrant after use."
- 7. Bylaw No. 5637 is amended by deleting Schedules A through G and substituting the attached Schedules A through G.
- 8. This Bylaw comes into force and effect on January 1, 2007.
- 9. This Bylaw is cited as "**Waterworks And Water Rates Bylaw No. 5637, Amendment Bylaw No. 8153**".

FIRST READING

NOV 14 2006

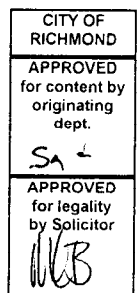
SECOND READING

NOV 14 2006

THIRD READING

NOV 14 2006

ADOPTED



\_\_\_\_\_  
MAYOR

\_\_\_\_\_  
CORPORATE OFFICER

**SCHEDULE "A" to BYLAW NO. 5637****BYLAW YEAR - 2007****FLAT RATES FOR RESIDENTIAL, AGRICULTURAL, AND  
INSTITUTIONAL PURPOSES ONLY**

A.	Residential Dwellings per unit	
	Dwellings with 20 mm (¾") water service	\$426.36
	Dwellings with 25mm (1") water service or greater than 25 mm (1") water service	See Metered Rates – Schedule B
	Townhouse	\$349.03
	Apartment	\$224.91
B.	Stable or Barn per unit	\$96.92
C.	Field Supply – each trough or water receptacle or tap	\$60.58
D.	Public Schools for each pupil based on registration January 1 <sup>st</sup>	\$5.73

**SCHEDULE B to BYLAW NO. 5637**

**BYLAW YEAR – 2007**

**METERED RATES**

(Page 1 of 2)

**METERED COMMERCIAL, INDUSTRIAL AND INSTITUTIONAL PROPERTIES  
AND MULTIPLE-FAMILY AND STRATA TITLED PROPERTIES**

**1. RATES**

All consumption per cubic metre:	\$0.7531
Minimum charge in any 3-month period:	\$95.00
Undetected leak rate per cubic metre (per section 25b of this bylaw):	\$0.3618

**2. RENTS FOR EACH METER**

Rent per **water meter** for each 3-month period:

For a 16mm (5/8") meter	\$11.00
For a 20mm (3/4") meter	\$14.00
For a 25mm (1") meter	\$15.50
For a 32mm (1 1/4") meter	\$27.00
For a 40mm (1 1/2") meter	\$27.00
For a 50mm (2") meter	\$30.50

**COMPOUND TYPE**

75mm (3")	\$103.00
100mm (4")	\$158.00
150mm (6")	\$262.00

**TURBINE TYPE**

50mm (2")	\$60.50
75mm (3")	\$78.00
100mm (4")	\$113.00
150mm (6")	\$215.50
200mm (8")	\$280.00

**FIRE LINE TYPE**

100mm (4")	\$271.00
150mm (6")	\$366.00
200mm (8")	\$475.00
250mm (10")	\$633.00

## SCHEDULE B to BYLAW NO. 5637

BYLAW YEAR – 2007

## METERED RATES

(Page 2 of 2)

## METERED RESIDENTIAL PROPERTIES

## 1. RATES

All consumption per cubic metre:	\$0.7531
Minimum charge in any 3-month period:	\$20.00
Underground leak rate per cubic metre (per section 25b of this bylaw):	\$0.3618

## 2. MAINTENANCE CHARGE FOR EACH METER

Maintenance charge for <b>water meter</b> with connection up to 50mm (2") for each 3-month period:	\$10.00*
---	----------

\*For residential properties with a connection greater than 50mm (2"),  
the commercial and industrial properties rental rates apply.

**SCHEDULE C to BYLAW NO. 5637**

**BYLAW YEAR - 2007**

**METERED RATES**

**FARMS**

**1. RATES**

All consumption per cubic metre: \$0.7531

Minimum charge per 3-month period\*:

For 1<sup>st</sup> quarter billing (January – March inclusive) for 90m<sup>3</sup> or less \$95.00

For 2<sup>nd</sup> quarter billing (April – June inclusive) for 95m<sup>3</sup> or less \$95.00

For 3<sup>rd</sup> quarter billing (July – September inclusive) for 140m<sup>3</sup> or less \$95.00

For 4<sup>th</sup> quarter billing (October - December inclusive) for 90m<sup>3</sup> or less \$95.00

\*No minimum charge applies where there is no dwelling on the property.

**2. MAINTENANCE CHARGE FOR EACH METER**

Maintenance charge for meter up to 25mm (1”) for each 3-month period \$10.00\*

\*Applies only to properties with no dwelling.

## SCHEDULE D to BYLAW 5637

## BYLAW YEAR - 2007

## 1. WATER CONNECTION CHARGE

<b>SFD Residential Water Connection Size</b>	<b>Connection Charge</b>	<b>Price Per Metre Charge</b>	<b>Meter Charge</b>
25mm (1") diameter	\$1,800	\$175.00	\$750
40mm (1 ½") diameter	\$2,400	\$175.00	\$1,100
50mm (2") diameter	\$2,400	\$175.00	\$1,250
For residential properties with a connection greater than 50mm (2"), the commercial and industrial properties connection rates apply.			

<b>Multi-Family / Industrial / Commercial Water Connection Size</b>	<b>Connection Charge</b>	<b>Price Per Metre Charge</b>
25mm (1") diameter	\$1,800	\$175.00
40mm (1 ½") diameter	\$2,400	\$175.00
50mm (2") diameter	\$2,400	\$175.00
100mm (4") diameter	\$6,900	\$350.00
150mm (6") diameter	\$7,100	\$350.00
200mm (8") diameter	\$7,300	\$350.00
larger than 200mm (8") diameter	by estimate	by estimate

**SCHEDULE E to BYLAW 5637****BYLAW YEAR - 2006****CONSTRUCTION PERIOD WATER CONSUMPTION RATES –  
RESIDENTIAL**

<b>MONTH</b>	<b>REGULAR FAMILY DWELLING (rate per unit)</b>	<b>START BILL YEAR</b>	<b>MULTI-FAMILY APARTMENT LESS THAN 4 STOREYS (rate per unit)</b>	<b>START BILL YEAR</b>	<b>MULTI- FAMILY APARTMENT 4 STOREYS &amp; UP (rate per unit)</b>	<b>START BILL YEAR</b>
January 2007	\$ 426	2008	\$ 349	2008	\$ 484	2009
February 2007	\$ 391	2008	\$ 721	2009	\$ 465	2009
March 2007	\$ 355	2008	\$ 692	2009	\$ 446	2009
April 2007	\$ 320	2008	\$ 663	2009	\$ 427	2009
May 2007	\$ 284	2008	\$ 634	2009	\$ 409	2009
June 2007	\$ 249	2008	\$ 605	2009	\$ 390	2009
July 2007	\$ 213	2008	\$ 576	2009	\$ 371	2009
August 2007	\$ 668	2009	\$ 547	2009	\$ 650	2010
September 2007	\$ 632	2009	\$ 518	2009	\$ 631	2010
October 2007	\$ 597	2009	\$ 489	2009	\$ 612	2010
November 2007	\$ 561	2009	\$ 460	2009	\$ 594	2010
December 2007	\$ 526	2009	\$ 430	2009	\$ 575	2010

**CONSTRUCTION PERIOD WATER CONSUMPTION RATES –  
COMMERCIAL AND INDUSTRIAL**

<b>Water Connection Size</b>	<b>Consumption Charge</b>
20mm (3/4") diameter	\$135
25mm (1") diameter	\$270
40mm (1 1/2") diameter	\$675
50mm (2") diameter	\$1,690



**SCHEDULE F to BYLAW 5637****BYLAW YEAR - 2007****MISCELLANEOUS CHARGES**

1.	For an inaccessible meter as set out in Section 7	\$36 per month
2.	For each turn on or turn off	\$65
3.	For each non-emergency service call outside regular hours	Actual Cost
4.	Deposit for testing a meter as set out in Section 26	\$350
5.	Water Service Disconnections:	
	(a) when the service pipe is temporarily disconnected at the property line for later use as service to a new building	\$165
	(b) when the service pipe is not needed for a future development and must be permanently disconnected at the watermain, up to and including 50mm	\$1,100
	(c) if the service pipe is larger than 50mm	Actual Cost
6.	Trouble Shooting on Private Property	Actual Cost
7.	Fire flow tests of a watermain:	
	First test	\$250
	Subsequent test	\$100
8.	Locate or repair of curb stop service box	Actual Cost

**SCHEDULE G to BYLAW 5637****BYLAW YEAR - 2007****RATES FOR VANCOUVER INTERNATIONAL AIRPORT AUTHORITY (YVR)**

Applicable rate is \$0.3618 per cubic meter of water consumed, plus the following amounts:

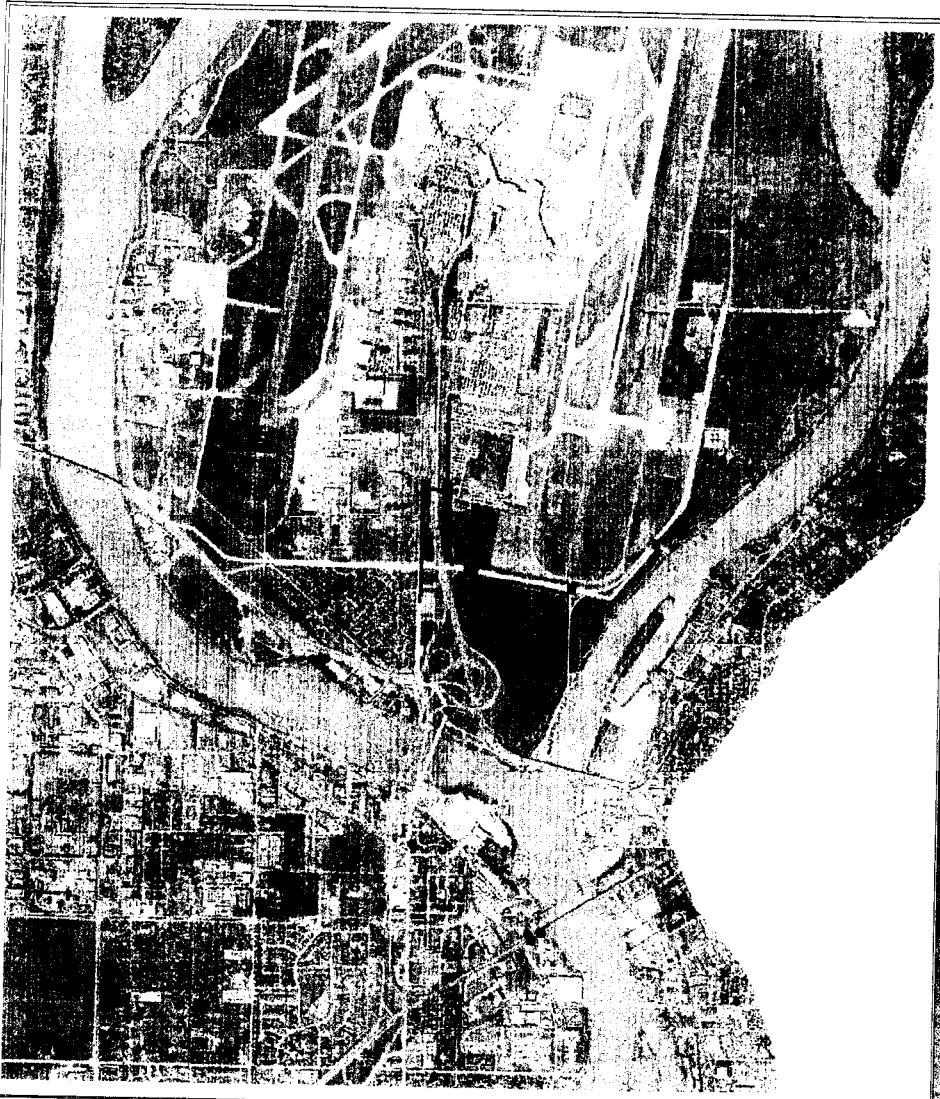
- YVR's share of future water infrastructure capital replacement calculated at \$0.2290 per m<sup>3</sup>
- 50% of the actual cost of operations and maintenance activities on water infrastructure shared by the **City** and YVR, as shown outlined in red on the plan attached as Schedule H
- 100% of the actual cost of operations and maintenance activities on water infrastructure serving only YVR, as shown outlined in red on the plan attached as Schedule H
- 100% of the actual cost of operations and maintenance activities on a section of 1064 m water main, as shown outlined in green on the plan attached as Schedule H from the date of completion of the Canada Line for a period of 5 years from the date of adoption of Waterworks and Water Rates Bylaw No. 5637, Amendment Bylaw No. 8153. After the 5 year period has expired, costs for this section will be equally shared between the City and YVR.

(Note: water infrastructure includes water mains, pressure reducing valve stations, valves, hydrants, sponge vaults and appurtenances)

SCHEDULE H to BYLAW NO. 5637

RICHMOND

Airport Water Mains



Legend

VALVE CHAMBERS

RVV

SPONGE VAULT

WATER MAINS

WVR

SHARED

SPECIAL 5 YEAR AGREEMENT



Creation Date: Spring, 2006  
Created By: Jife H. Green



This map was prepared by the City of Richmond, Virginia, and is the property of the City of Richmond, Virginia. It is not to be used for any other purpose without the written consent of the City of Richmond, Virginia. The City of Richmond, Virginia, is not responsible for any errors or omissions in this map. The City of Richmond, Virginia, is not responsible for any damages or liabilities arising from the use of this map. The City of Richmond, Virginia, is not responsible for any claims or damages arising from the use of this map. The City of Richmond, Virginia, is not responsible for any claims or damages arising from the use of this map.