



**Highway Closure and Removal Dedication ( Road and Lane off Garry Street) Bylaw**

The Council of the City of Richmond enacts as follows:

1. The lands described as Parcel A on the Reference Plan prepared by J.C. Tam and Associated, BCLS attached as Schedule A shall be stopped up and closed to traffic, cease to be a public highway and the highway dedication shall be removed.
2. Parcel A shall be disposed of to Garry West Holding Inc. or its designate for consolidation with their adjoining development lands at 4211 Garry Street, Richmond.
3. This Bylaw is cited as “**Highway Closure and Removal of Highway Dedication Bylaw 8227**”.

FIRST READING

MAY 28 2007

SECOND READING

MAY 28 2007

THIRD READING

MAY 28 2007

ADVERTISED ON

JUN 28 2007 JUL 05 2007

ADOPTED

CITY OF RICHMOND
APPROVED for content by originating dept.
<i>JR</i>
APPROVED for legality by Solicitor

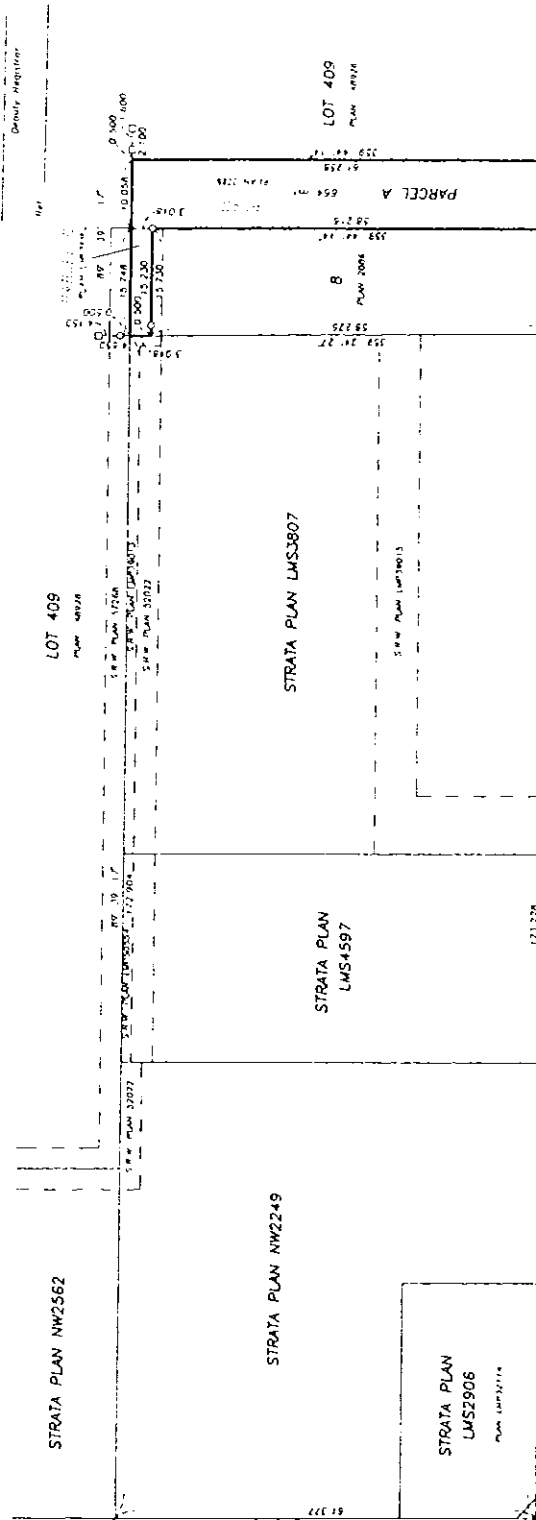
\_\_\_\_\_  
MAYOR

\_\_\_\_\_  
CORPORATE OFFICER

**REFERENCE PLAN TO ACCOMPANY CITY OF RICHMOND ROAD CLOSING AND REMOVAL OF ROAD BY-LAW No. 8227 OF 1) PART LANE DEDICATED BY THE DEPOSIT OF PLAN 20886 (PARCEL D PLAN LMP38154) AND 2) PART ROAD DEDICATED BY THE DEPOSIT OF PLAN 2086 BOTH OF SECTION 2, BLOCK 3 NORTH RANGE 7 WEST NEW WESTMINSTER DISTRICT B.C.G.S. 926.015 PURSUANT TO SECTION 120 LAND TITLE ACT AND SECTION 40 COMMUNITY CHARTER**

PLAN BCP

Drawn in the Land Title Office  
of New Westminster, B.C. on \_\_\_\_\_, 2007  
by \_\_\_\_\_



GARRY STREET

LANDLORD (SIGNALISED)  
CITY OF RICHMOND BY ITS  
AUTHORIZED SIGNATORIES

MAYOR MALCOLM D SIMON  
AUTHORIZED SIGNATORY

CLERK David Weber  
AUTHORIZED SIGNATORY

OFFICER (SIGNATURE)

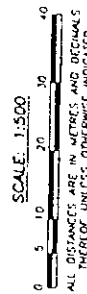
COMMISSIONER FOR  
TAKING AFFIDAVITS FOR B.C.  
CITY OF RICHMOND  
9511 NUMBER 5 ROAD  
RICHMOND, B.C.  
V6Y 2C1  
PHONE (604) 274-4090

AS TO THE SIGNATURE OF DAVID WEBER

THIS \_\_\_\_\_ DAY OF \_\_\_\_\_ 200

I, J. C. Tom and Associates  
Condo and B.C. Land Surveyor  
115 - 6833 Ogden Crescent  
Richmond, B.C. V6X 3T7  
Telephone 274-8928  
Fax 274-8929  
E-mail jctom@bcmls.net  
Lic. No. 2872  
RBC-1 P51-53  
Drawn By: M

DWG No. 2872-REF-01



Code heights are derived from observations between  
control monuments 724887 and 724892  
Integrated Survey Area No. 10, (RICHMOND), NOVA (CSRS)  
This plan shows ground level measured distances  
Prior to combination of UTM co-ordinates  
multiplied by combined factor of 0.99960035  
This plan is within the Greater Vancouver Regional District.

I, Jonathan C. Tom, a British Columbia  
Land Surveyor of the City of Richmond  
in British Columbia certify that I was  
present at and personally supervised  
the survey represented by this plan and  
that the survey and plan are correct.  
The field survey was completed on the  
11th day of April, 2007. This plan was  
completed and checked, and the checklist  
filed under # 83306, on the 24th day  
of April, 2007.

JOHNATHAN C. TOM, B.C.L.S.