



**CITY OF RICHMOND**

**REPORT TO COUNCIL**

**TO:** Council  
**FROM:** Barrie King, P.Eng.  
Manager, Sewerage and Drainage  
**RE: Reconstruction of Peace Arch Pump Station**

**DATE:** June 30, 2000  
**FILE:** 6045-01

**STAFF RECOMMENDATION**

That Council approve the expenditure of \$30,000 for the construction of a second storey to the Peace Arch Pump Station building for the purposes of storage and an off-site workshop.

Barrie King, P.Eng.  
Manager, Sewerage and Drainage

FOR ORIGINATING DIVISION USE ONLY		
ROUTED TO:	CONCURRENCE	CONCURRENCE OF GENERAL MANAGER
Engineering .....	Y <input type="checkbox"/> N <input type="checkbox"/>	_____
Budget .....	Y <input type="checkbox"/> N <input type="checkbox"/>	

## STAFF REPORT

### ORIGIN

The City has a program of infrastructure renewal, and one part of that program is the reconstruction of obsolete and dilapidated drainage pump stations. One of the pump stations up for reconstruction is the Peace Arch Pump Station, located within the grounds of the B.C. Ferry Corporation maintenance dock near the George Massey Tunnel.

### ANALYSIS

The original design for the station called for a utilitarian single-storey building to house the motor control units and a proposed future emergency generator set. The pump station is securely located between the car park and administration buildings on the grounds of the B.C. Ferry Corporation's maintenance dock west of the George Massey Tunnel in South Richmond. The catchment area of the pump station includes areas as far north as Granville Avenue which includes the 11,000 block Granville. The size and capacities of the pumps will be upgraded to take into consideration current developments such as the Riverside East Industrial Park and in the Public Assembly Lands on No. 5 Road.

The City has about 50 sanitary and drainage pump stations in South Richmond, and these stations require both routine and emergency repairs. The equipment and spare parts for these repairs are stored at the Works Yard. To reduce travel time and improve the speed and efficiency of repairs and maintenance of pump stations in the area, staff believe it would be prudent and cost effective to add a second storey to the pump station building to house a workshop and storage area. The proposed addition would also add aesthetically to the look of the project, in contrast to existing utilitarian pump station buildings. The estimated additional cost of the second storey and improved roof design is \$30,000.

The new drainage pump station at Tipping Road South has recently been constructed, and due to competitive bidding in the minor contracts for that pump station construction, the contract is approximately \$40,000 under-expended and staff request that Council authorize the transfer of funds from that account to the Peace Arch Pump Station account to complete the second storey.

### FINANCIAL IMPACT

Funds are available in the 2000 Drainage Bylaw account to cover the additional cost of the second storey of the Peach Arch Pump Station.

CONCLUSION

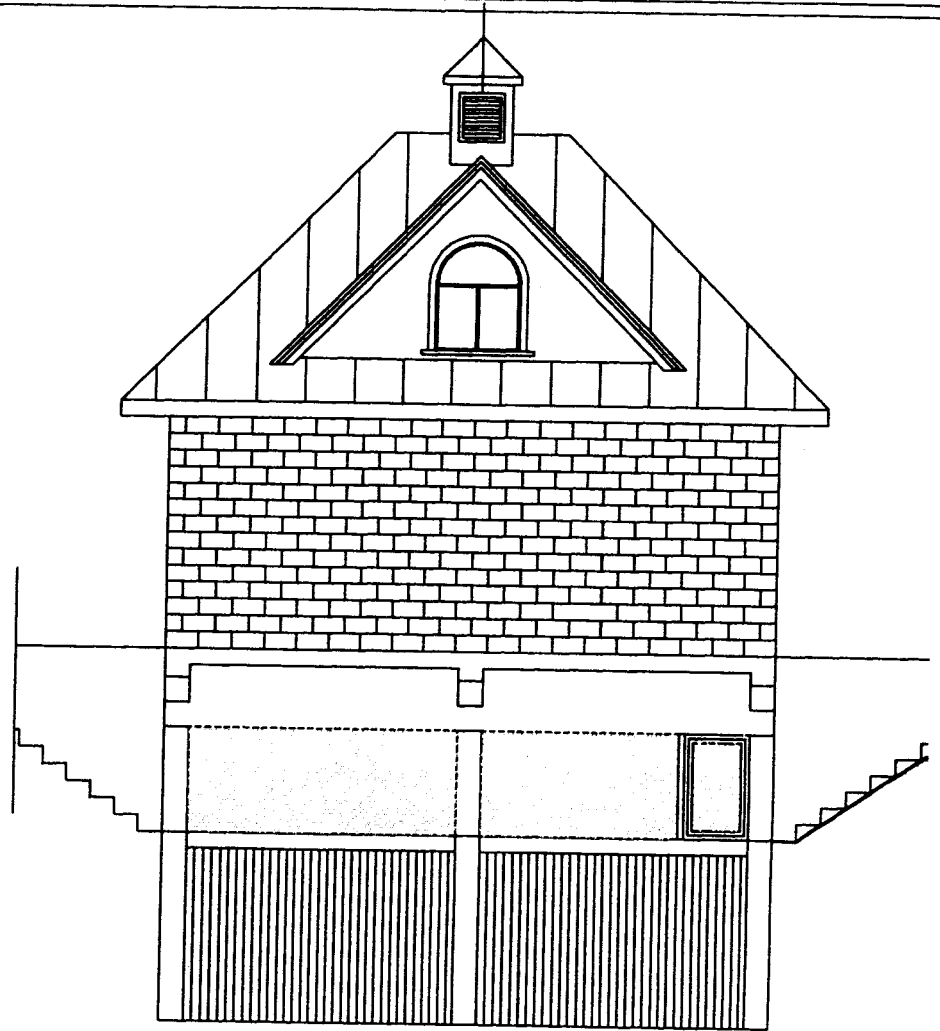
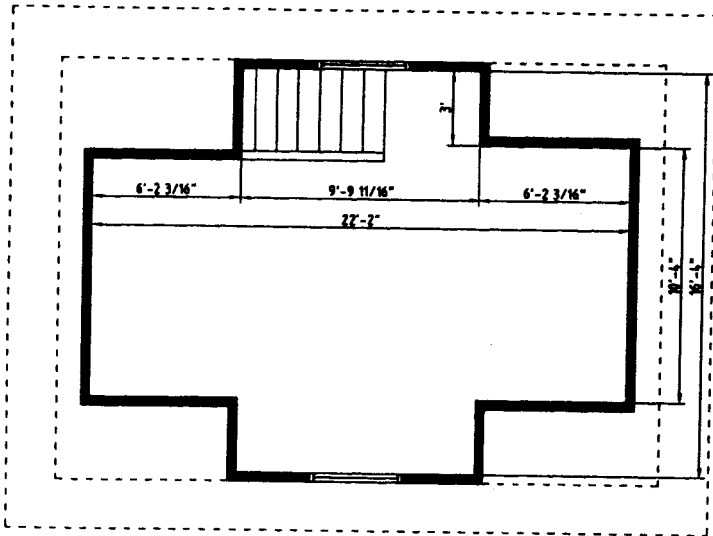
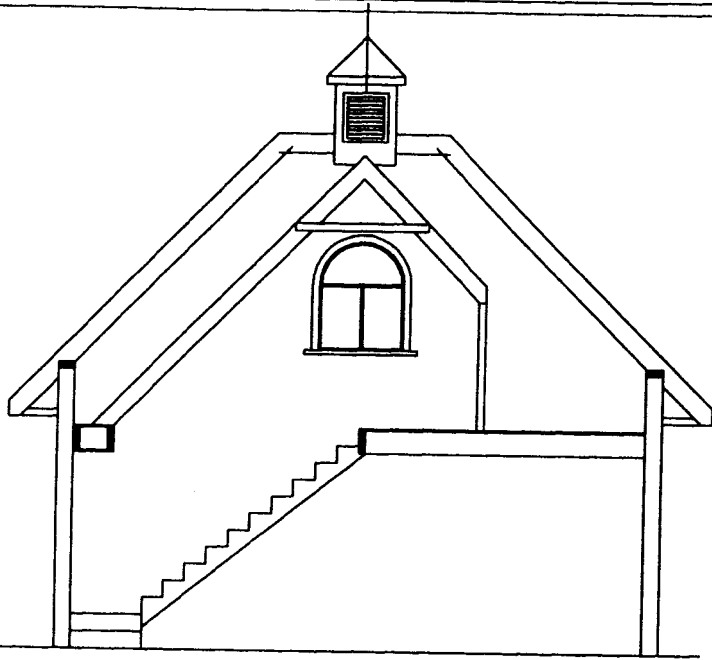
The addition of a second storey to the Peach Arch Drainage Pump Station building to house a workshop and storage space will not only improve the efficiency and speed of repairs to pump stations in South Richmond, but will improve the visual appeal of the pump station. The proposed change to the project scope is in accord with aspects of the City's vision of being appealing and well-managed.

Barrie King, P.Eng.  
Manager, Sewerage and Drainage

Att.(2)

BK:db

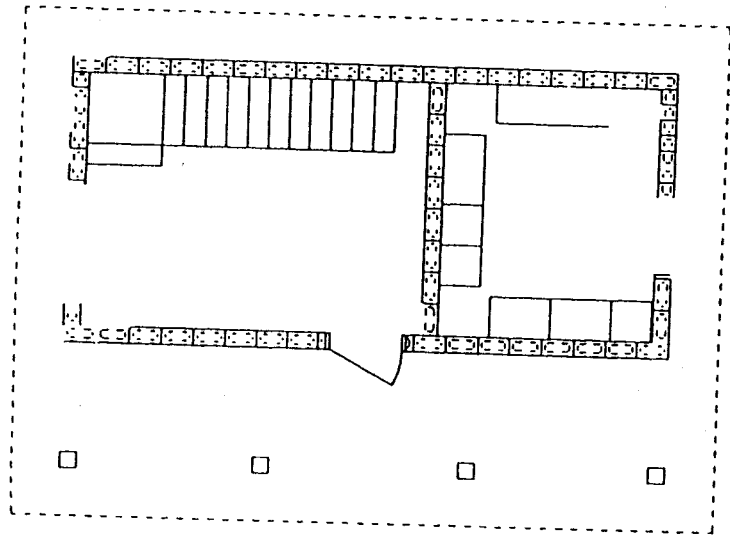
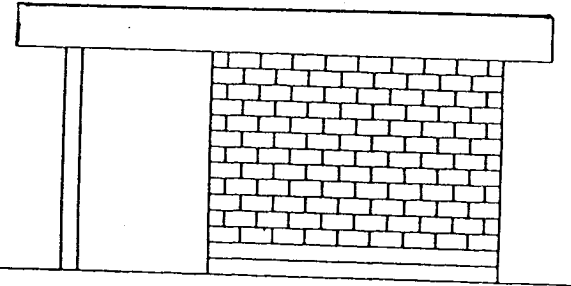
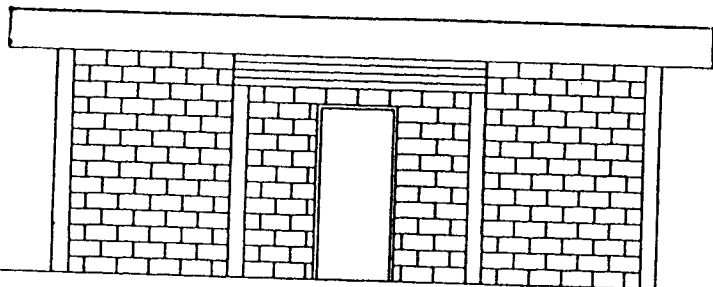
116



Pump station with second storey

CITY of RICHMOND		
DRAWN BY: P. TALBOT	REVISIONS TO THE PEACE ARCH PUMP STATION	SCALE: AS SHOWN ON DRAWING
DATE: FEB. 21, 2008		

117



Single storey utilitarian pump station building.

CITY of RICHMOND		
DRAWN BY: D. TALLEY	RENOVATION OF THE PEACE ARCH PUMP STATION	SCALE: AS SHOWN
CITY:		
DATE: FEB. 21, 2008		