

CITY OF RICHMOND

BYLAW 7144

**A BYLAW TO AUTHORIZE THE EXCHANGE OF CERTAIN
PORTIONS OF A HIGHWAY FOR OTHER LANDS IN SECTION 28
BLOCK 5 NORTH RANGE 6 WEST NEW WESTMINSTER DISTRICT
REQUIRED FOR HIGHWAY PURPOSES**

The Council of the City of Richmond, in open meeting assembled, enacts as follows:

1. Pursuant to Section 525 of the Municipal Act, being Chapter 323 of the Revised Statutes of British Columbia, 1996, as amended, the Council of the City of Richmond, does grant and dispose to Skyline Airport Hotel (1997) Ltd or its nominee:

All and singular that certain parcel or tract of land in the City of Richmond contained in Section 28 Block 5 North Range 6 West dedicated as Road by plan 3404 and being more particularly described as Parcel "B" ; and ,

All and singular those certain parcels or tracts of land in the City of Richmond contained in Section 28 Block 5 North Range 6 West dedicated as Road by plan 28458 and being more particularly described as Parcels "A" ,"C", "D" and "E" ;

all as shown on Reference Plan to Accompany Bylaw No. 7144 prepared by Hans. J. Troelsen, B.C.L.S., and certified correct on the 16th day November, 1999.

2. The Mayor and Clerk are hereby authorized to execute a Form of Transfer to have effect as a Crown Grant disposing, conveying and granting the said parcels "A", "B", "C", "D" and "E" unto Skyline Airport Hotel (1997) Ltd., or its nominee, by affixing the seal of the City thereto and attesting to the fact by signing their names.
3. The said Parcels "A", "B", "C", "D" and "E" described in Section 1 of this Bylaw shall be stopped-up and closed to traffic.
4. It shall be lawful, pursuant to the said Section 525 of the Municipal Act, for Skyline Airport Hotel (1997) Ltd., or their nominee, to enter into a form of Transfer for the purpose of disposing, conveying and granting to Her Majesty the Queen in Right of the Province of British Columbia, in exchange for the said Parcels "A", "B", "C", "D" and "E", the following lands:

Parcel "F" of (PID 017-644-143) Parcel A Except: Part dedicated Road on Plan LMP45475 Section 28 Block 5 North Range 6 West NWD Reference Plan LMP2896

Parcel "G" of (PID 001-659-421) Lot 7 Except: Firstly: Part Included in Plan 24687 and Secondly: Part on Plan with Bylaw Filed A1160; Section 28 Block 5 North Range 6 West NWD Plan 11446

Parcel "H" of (PID 001-659-413) Lot 6 Except: Part Included in Plan 24687; Section 28 Block 5 North, Range 6 West, NWD Plan 11446

Parcel "I" of (PID 001-569-391) Lot 5, Except: Firstly: Part Outlined Red on Plan 24687 and Secondly: Part Dedicated Road on Plan 28458, Section 28 Block 5 North Range 6 West, NWD Plan 11446

all as shown on Reference Plan to Accompany Bylaw No. 7144 prepared by Hans J. Troelsen, B.C.L.S. and certified on the 16th day of November, 1999 a paper print of which is attached hereto, such land being necessary for the purpose of establishing a roadway within the City of Richmond.

- 5. The said land so received under Section 4 of this Bylaw shall be and the same is hereby dedicated as a public highway.
- 6. This Bylaw may be cited as "**Road Exchange Bylaw No. 7144**".

FIRST READING

SECOND READING

THIRD READING

DULY ADVERTISED ON

DULT ADVERTISED ON

ADOPTED

MAYOR

JUN 12 2000

JUN 12 2000

JUN 12 2000

JUN 18 2000

JUN 21 2000

CITY OF RICHMOND
APPROVED for content by originating dept.
APPROVED for legality by Solicitor

CITY CLERK

REFERENCE PLAN TO ACCOMPANY THE CITY OF RICHMOND ROAD EXCHANGE BYLAW No. 7144
OVER PART OF SECTION 28 BLOCK 5 NORTH RANGE 6 WEST NEW WESTMINSTER DISTRICT

B.C.S. 926.015

PURSUANT TO SECTION 120 LAND TITLE ACT

LANDS DEALT WITH:

PART OF PARCEL A EXCEPT PART DEDICATED ROAD ON PLAN LMP45475
 SECTION 28 BLOCK 5 NORTH RANGE 6 WEST NEW WESTMINSTER DISTRICT
 REFERENCE PLAN LMP2096

PART OF LOT 5 EXCEPT FIRSTLY PART OUTLINED RED ON PLAN 24687 AND
 SECONDLY PART INDICATED ROAD ON PLAN 28458, SECTION 28
 BLOCK 5 NORTH RANGE 6 WEST, N.W.D. PLAN 11446

PART OF LOT 6 EXCEPT PART INCLUDED IN PLAN 24687, SECTION 28
 BLOCK 5 NORTH RANGE 6 WEST, N.W.D. PLAN 11446

PART OF LOT 7 EXCEPT FIRSTLY PART INCLUDED IN PLAN 24687
 AND SECONDLY PART ON PLAN WITH BYLAW FILED 11160, SECTION 28
 BLOCK 5 NORTH RANGE 6 WEST, N.W.D. PLAN 11446

PART OF ROAD INDICATED ON PLAN 28458

PART OF ROAD INDICATED ON PLAN 3404

H-00-12372-167

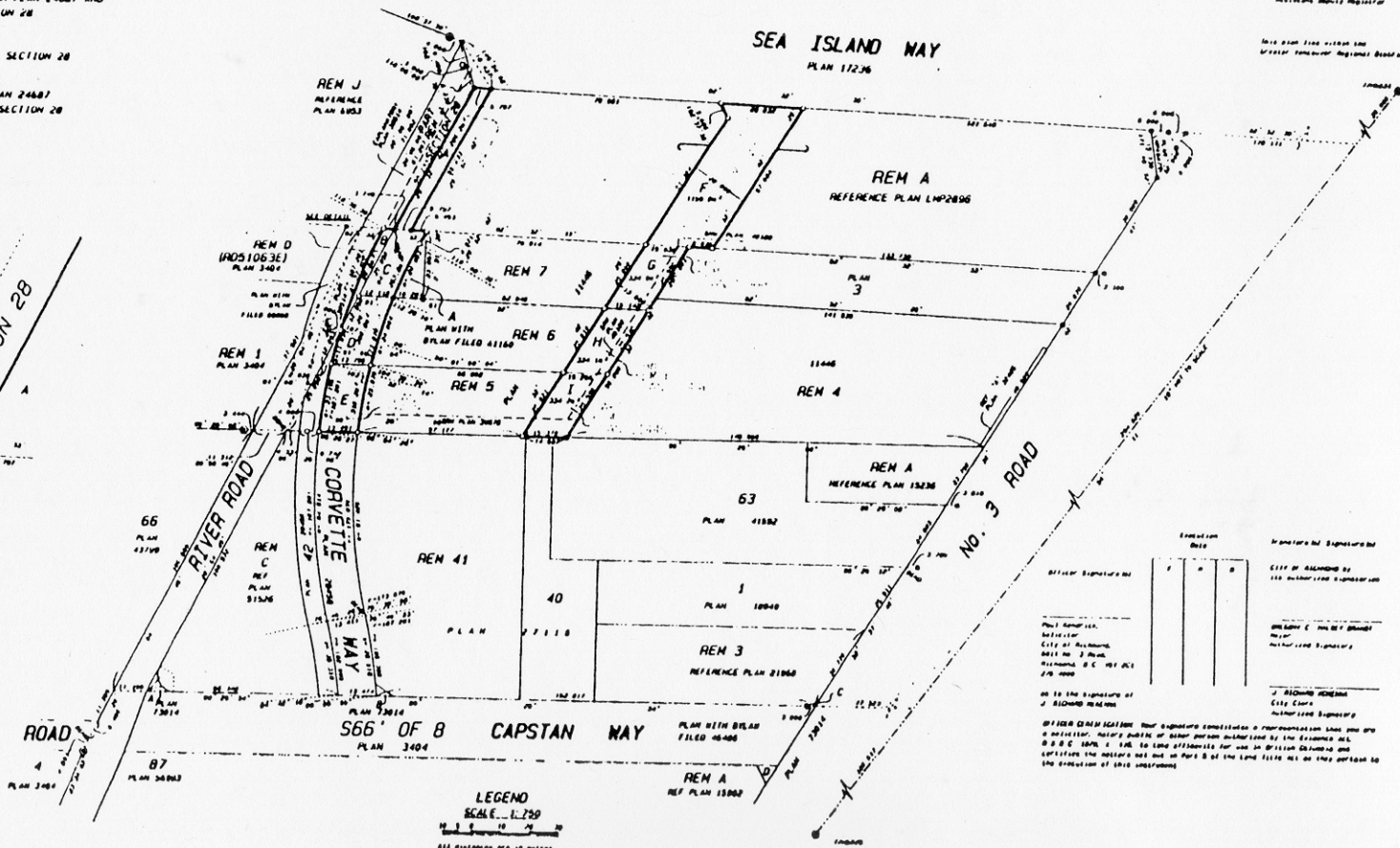
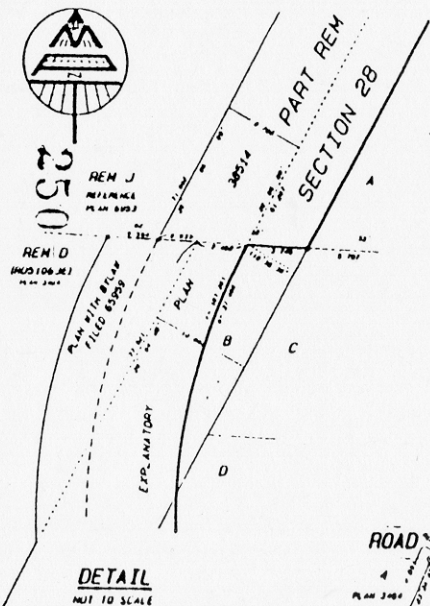
PLAN LMP

REF. NO. _____

Registered in the Land Title Office
 at the Metropolitan B.C.
 Title Office at _____

Registered in the Provincial Register

This plan was filed with the
 Greater Vancouver Regional Board on _____



LEGEND

SCALE 1:750

ALL DISTANCES ARE IN METERS.

Red lines and symbols are used to indicate boundaries between lots and between lots and roads.

Red lines and symbols are used to indicate boundaries between lots and between lots and roads.

Red lines and symbols are used to indicate boundaries between lots and between lots and roads.

Red lines and symbols are used to indicate boundaries between lots and between lots and roads.

Red lines and symbols are used to indicate boundaries between lots and between lots and roads.

Red lines and symbols are used to indicate boundaries between lots and between lots and roads.

Red lines and symbols are used to indicate boundaries between lots and between lots and roads.

Red lines and symbols are used to indicate boundaries between lots and between lots and roads.

Red lines and symbols are used to indicate boundaries between lots and between lots and roads.

Red lines and symbols are used to indicate boundaries between lots and between lots and roads.

City of Richmond
 City Clerk

 City of Richmond by

 J. Richard Hedges
 City Clerk

 Authorized Signatory

BY HER DEMISE I declare that my signature constitutes a representation that I am a
 qualified signatory under the provisions of the Act and that I am duly qualified to
 execute the matters set out in Part B of the land title act in my capacity as
 the execution of this instrument.

I, _____, of the City of Richmond, do hereby certify that I am a
 qualified signatory under the provisions of the Act and that I am duly qualified to
 execute the matters set out in Part B of the land title act in my capacity as
 the execution of this instrument.

MATSON PUGH & TOM ISE
 600-610-1111
 600-610-1111
 600-610-1111
 600-610-1111
 600-610-1111

H-00-12372-167