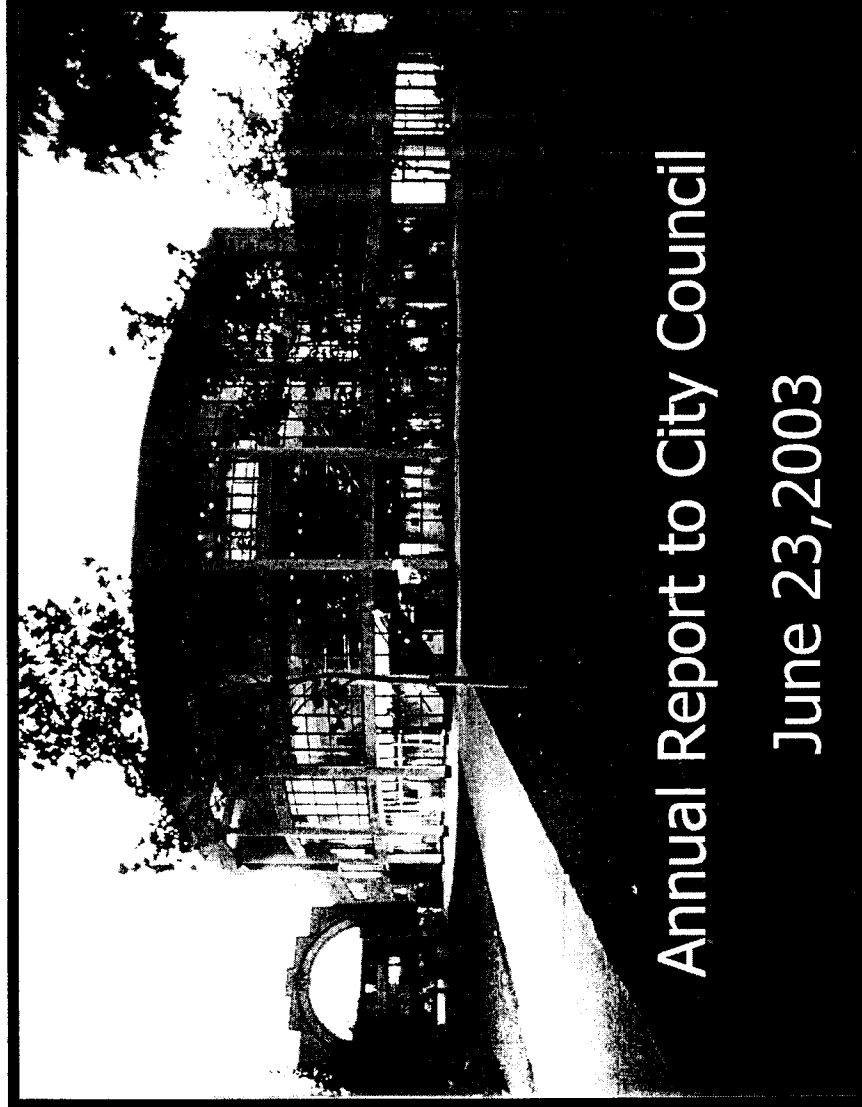


Gateway Theatre



GA

Home

Our Mandate

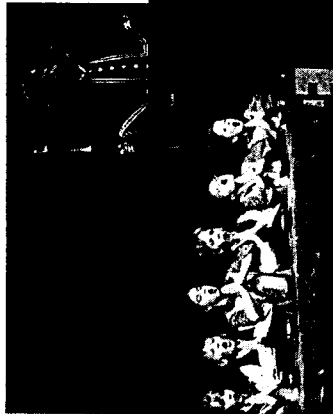


To Provide the Community With Opportunities to
Participate in The Performing Arts Through
Excellence in Programs and Services



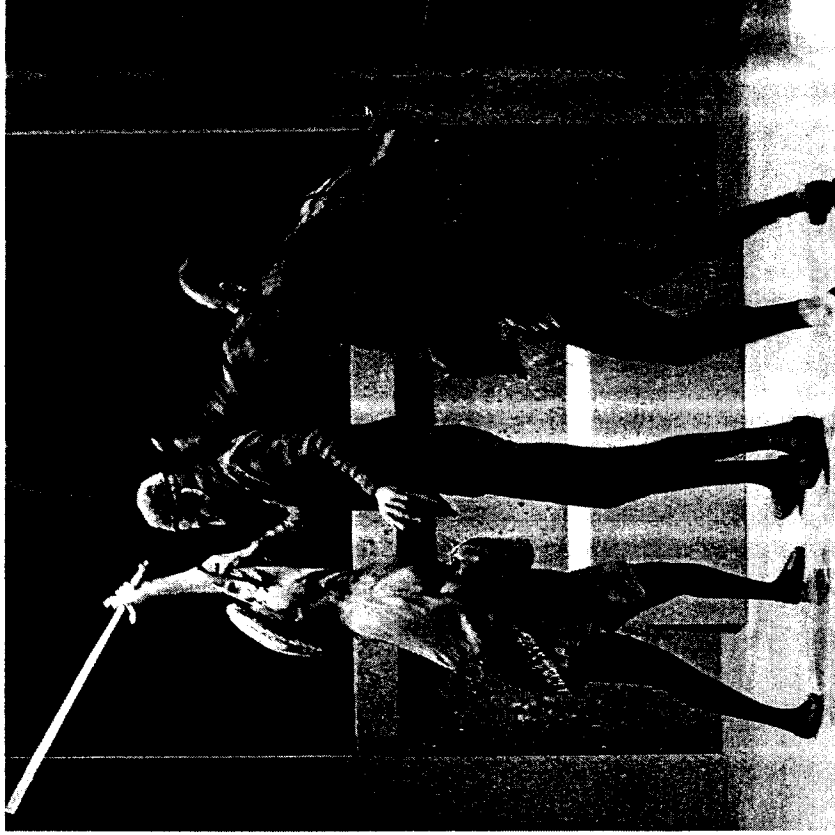
Our Vision is to be:

- A leader in the performing arts in our community
- A professional theatre with unique and culturally diverse programs
- Inclusive and welcoming to a changing community through outreach programs.



Our Core Programs

- MainStage and New Play Series
- The Gateway Academy
- The International Pacific Piano Competition
- The Rental Program
- Community Outreach Programs

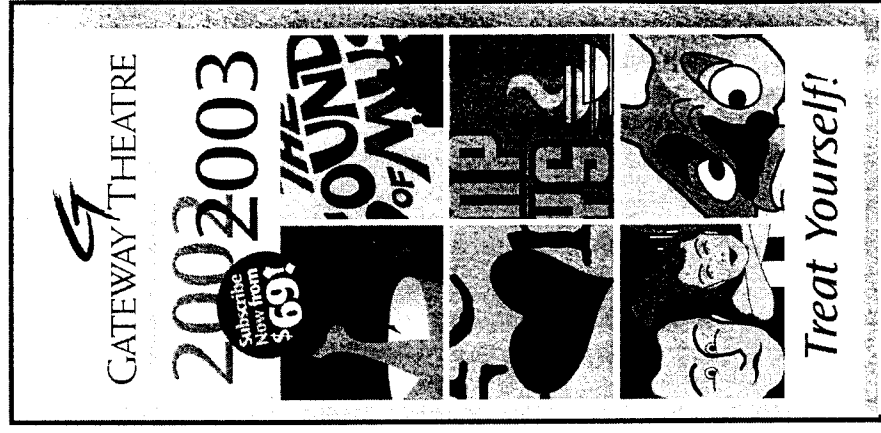


Home To Us

MainStage and New Play Series

Live, Professional Theatre

- The Lower Mainland's third largest theatre company.
- 6 productions from Oct - May.
- New plays by award winning Canadian playwrights with a focus on cultural diversity.



2002-2003 Productions



Midnight Desdemona
(Good Morning Juliet)
Comedy

Oct. 17 - Nov. 2, 2002



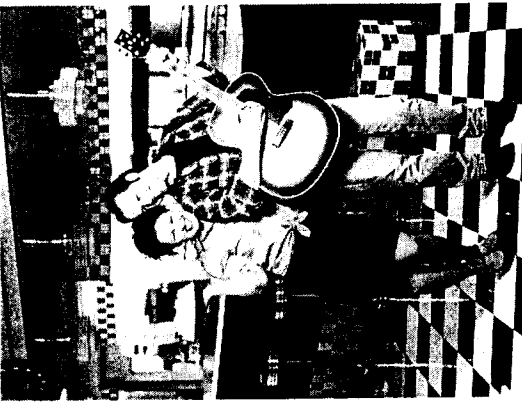
The Sound of Music
musical

Dec. 12, 2002 - Jan. 5, 2003



To Die For
mystery

Jan. 30 - Feb. 15, 2003



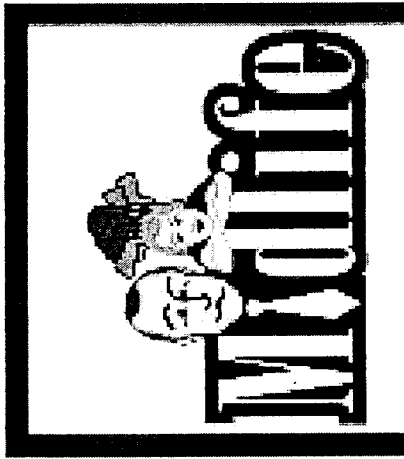
Pump Boys & Dinettes
Musical

Jan. 30 - Feb. 15, 2003



2002-2003 Productions

New Play Series



Midlife
comedy
by Eugene Stickland
March 6 - 15, 2003

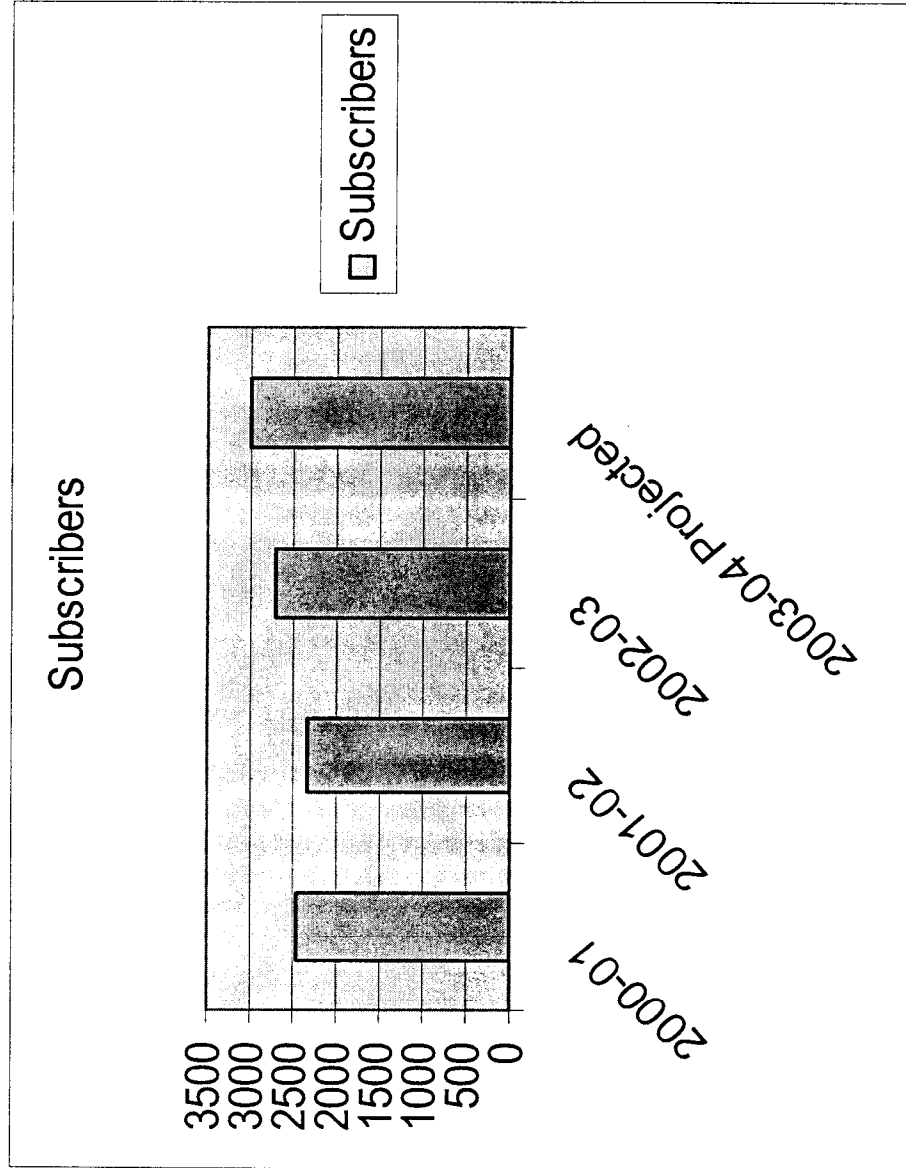


Funny-faced Ogre
folk tale
by Asaya Fujita translated by Yoshi
Yoshihara & James Roy
May 1 - 10, 2003



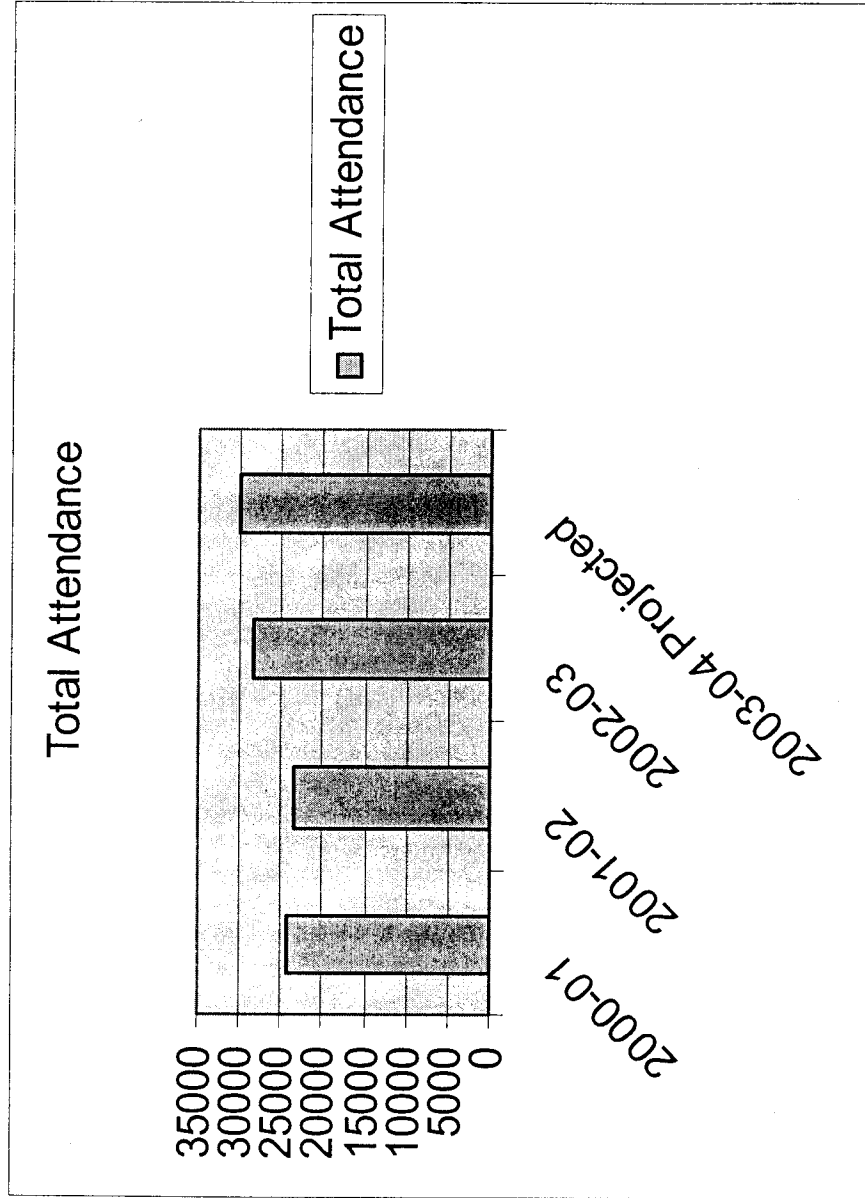
Subscriptions

MainStage and New Play Series



Total Attendance

MainStage and New Play Series



The Gateway Academy



Gateway
Academy

Performing Arts

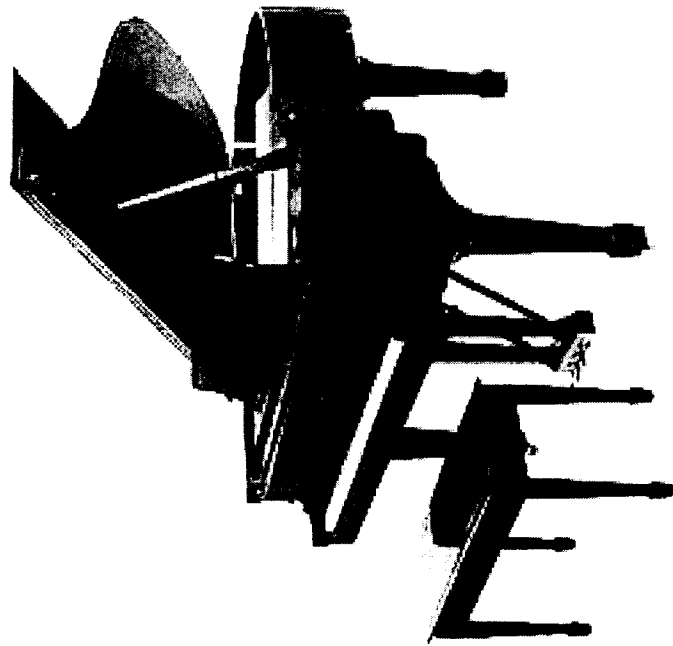
- Acting, musical theatre, and technical training for ages 8-18.
- Professional instructors and choreographers.

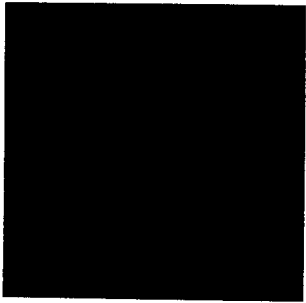


Home to

Pacific Piano Competition

- 9th year
- \$ 5,000 top prize
- International competitors
- Performance opportunities for young pianists
- Adjudicated by Canada's most celebrated professional pianists





Piano Competition Winner

Sponsors

Tom Lee Piano, HSBC, Stereo
Printers



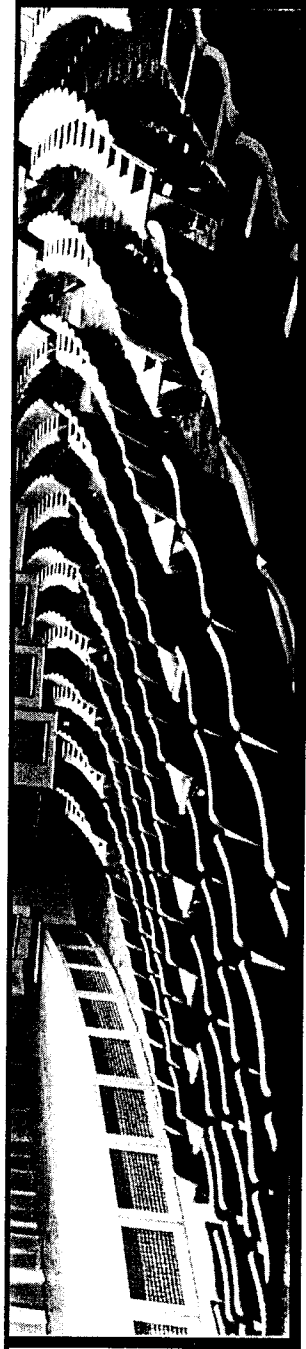
Jovanni-Rey de Pedro
2003



Rentals

The rental facilities were used 561 times in 2003
Up from 541

- Rented to professional and community groups
- For performances, film locations, receptions, meetings
- Total attendance for all uses in 2002-2003 was 59,140 up from 58,018

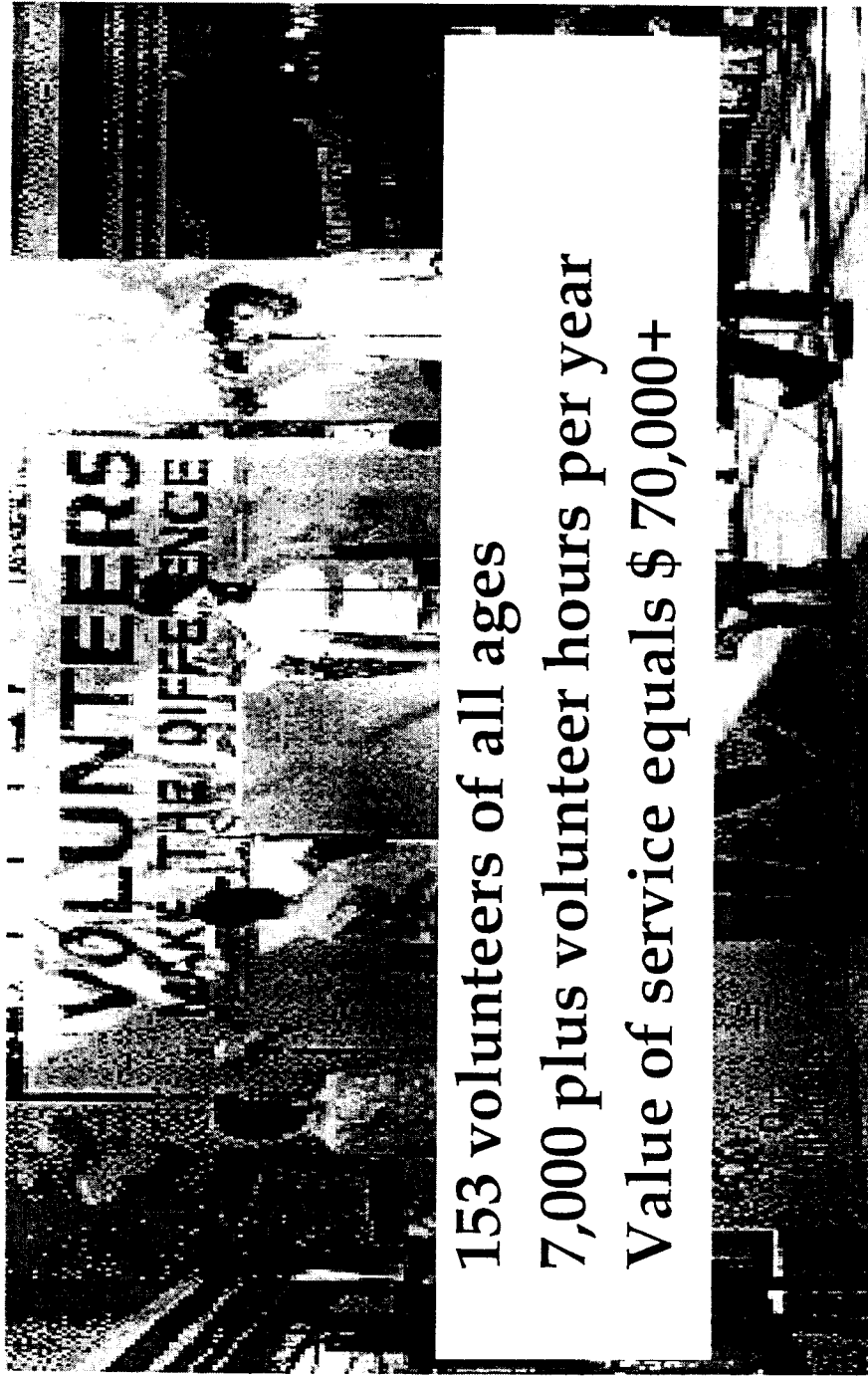


Community Outreach

- Volunteers
- Education outreach
- Mentorship



Volunteers



153 volunteers of all ages
7,000 plus volunteer hours per year
Value of service equals \$ 70,000+



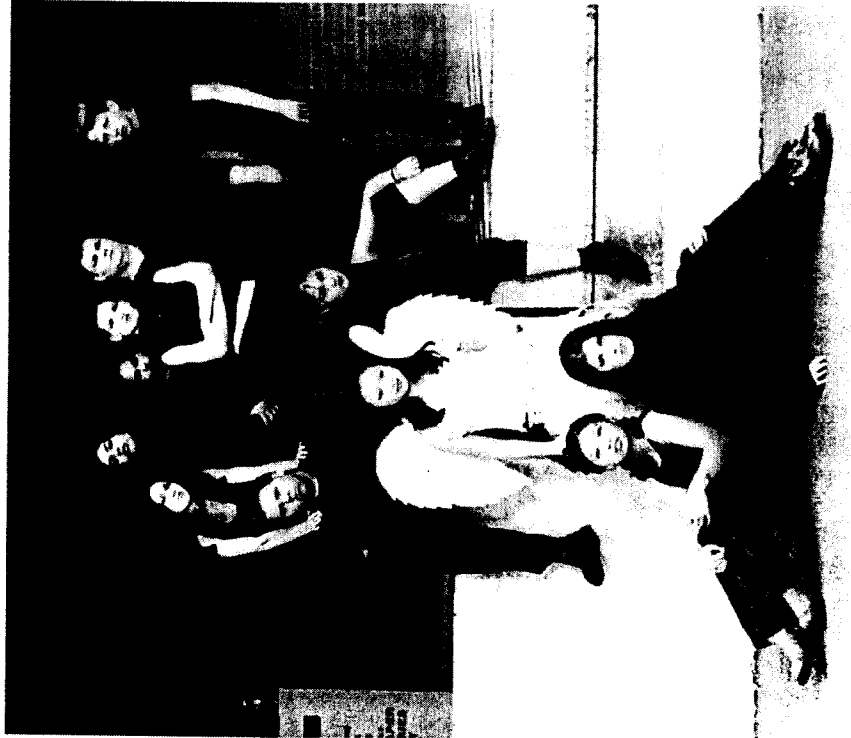
Education Outreach



Robert A. McMath Secondary



Mentorship



Miscellaneous
Productions

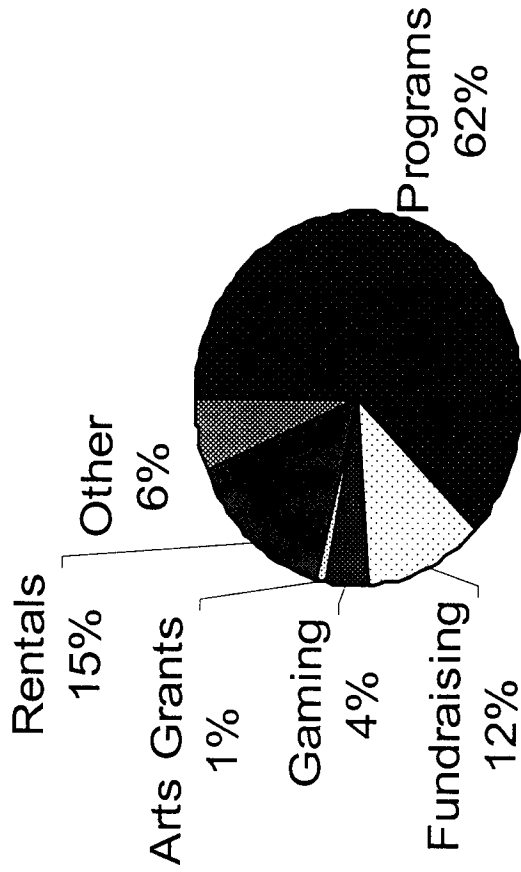
"Outcasts and Angels"

In the memory of Rena Verk



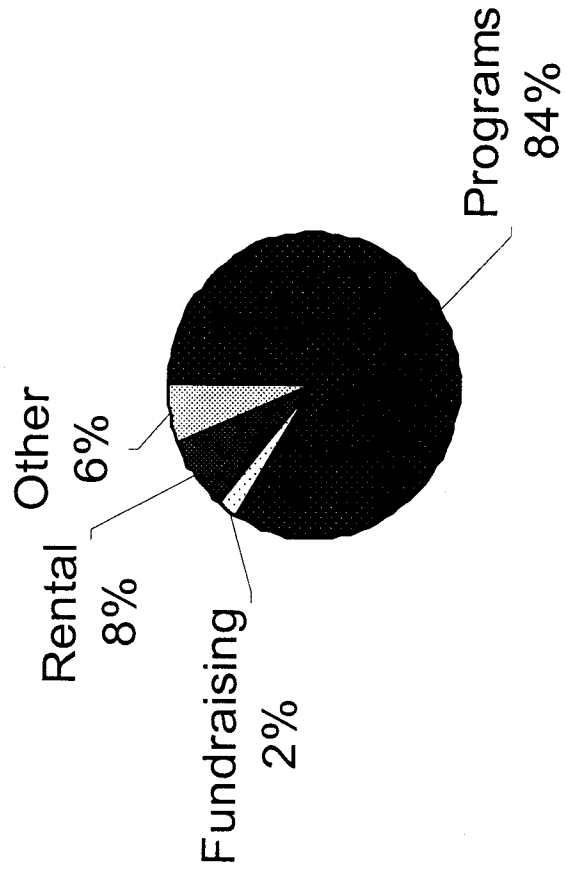
Financial Overview

Revenues (projected)



Financial Overview

Expenses (projected)



Sponsors



City of Richmond
British Columbia, Canada



coastcapital

TELUS



Audi
of Richmond

BEST WESTERN
RICHMOND HOTEL
& CONVENTION CENTRE



UNIVAR



MEGASTONE
A LONG MOUNTAIN BAKERY COMPANY



RBC
Foundation

105.7

CBC # radio *Five*

690
CBC # radio **ONE**



INDUSTRIAL
PLASTICS & PAINTS



S&T
STEREO
PRINTERS LTD.

星島日報
BING TAO DAILY

the **REVIEW**



Home

Call Us!



Telephone: 604-270-6500
www.gatewaytheatre.com



Home TV