

*The vision for the Oval imagines a place that captures the unique spirit of the region, becomes an international destination and acts as a catalyst for urban waterfront development.*





## The Oval: 21st Century Wellness Centre

### *Integrated & Site Specific Art Opportunities*

*In order to maximize resources, influence elements of the site design, and integrate artwork through out the project, the art plan prioritizes art investments on the building exterior and grounds. The vision for the Oval imagines a place that captures the unique spirit of the region, becomes an international destination and acts as a catalyst for urban waterfront development. Public artwork is an effective civic tool, as part of a holistic approach to the architecture and landscape architecture and urban planning, for achieving this vision.*

This section is divided into two areas: Part 1 outlines art opportunities for the Oval building and Part 2 describes art opportunities for the Oval grounds. Each opportunity is listed in priority established by the Public Art Work Group. The descriptions include a brief summary of the art scope, recommended budget and a proposed artist selection methodology. The images illustrate regional and international examples of public artwork and the amazing range and creative solutions

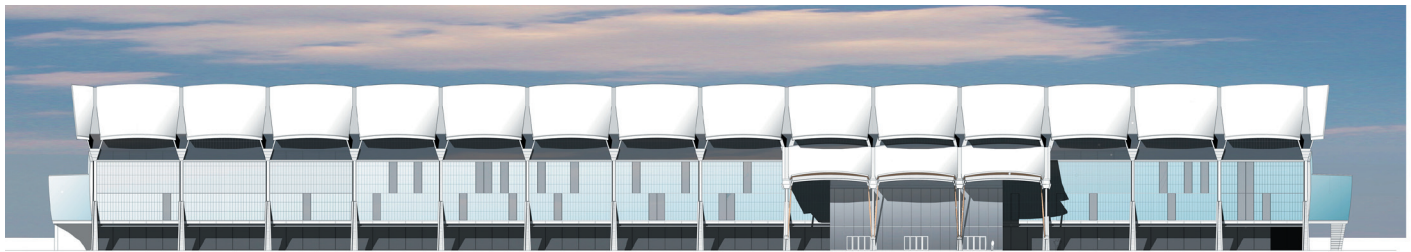
that artists bring to community partnerships and successful civic projects.

- 1A Polycarbonate Skin:  
*Luminosity and Color*  
High Priority
- 1B Concrete Buttresses:  
*Contemporary*  
*Housepost Forms*  
High Priority
- 1C Suspended Sculpture:  
*A Grand Arrival*  
High Priority

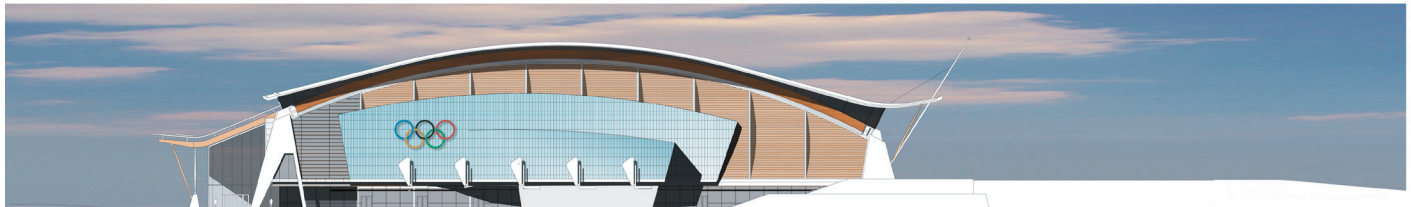




*Takao Tanabe, widely recognized throughout Canada as an artist of significant achievement, has expressed interest in joining the team as a specialized color consultant*



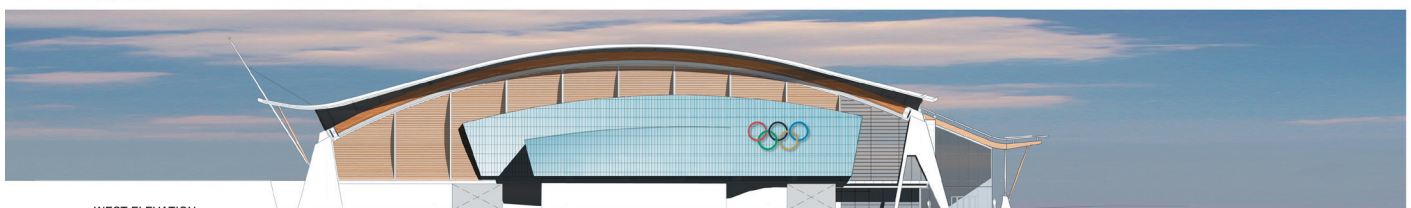
SOUTH ELEVATION



EAST ELEVATION



NORTH ELEVATION



WEST ELEVATION



## 1A Polycarbonate Skin

### *Luminosity and Color*

The south elevation of Richmond's Speed Skating Oval will be clad in a translucent polycarbonate skin, available in a limited palette. There are many variables that influence the design and successful application of this glowing translucent skin. The current building design and cost estimate calls out a double layer of polycarbonate material within a metal mullion curtain wall system. Within that basic framework there are many choices, for example, colors can be layered to change or enhance values and the width of the colored panels within the window mullions can be varied to create a more unique composition.

Through close collaboration with the Cannon architectural team, an artist with a refined and mature sense of color and an intuitive understanding of the expressive quality of the light of the region will maximize the silk-like characteristic of the Oval cladding. Takao Tanabe, widely recognized throughout Canada as an artist of significant achievement throughout his 50-year career, has expressed interest in joining the team as a specialized color consultant.

*The Public Art Work Group ranked this opportunity as a high priority.*

Richmond Oval Art Plan



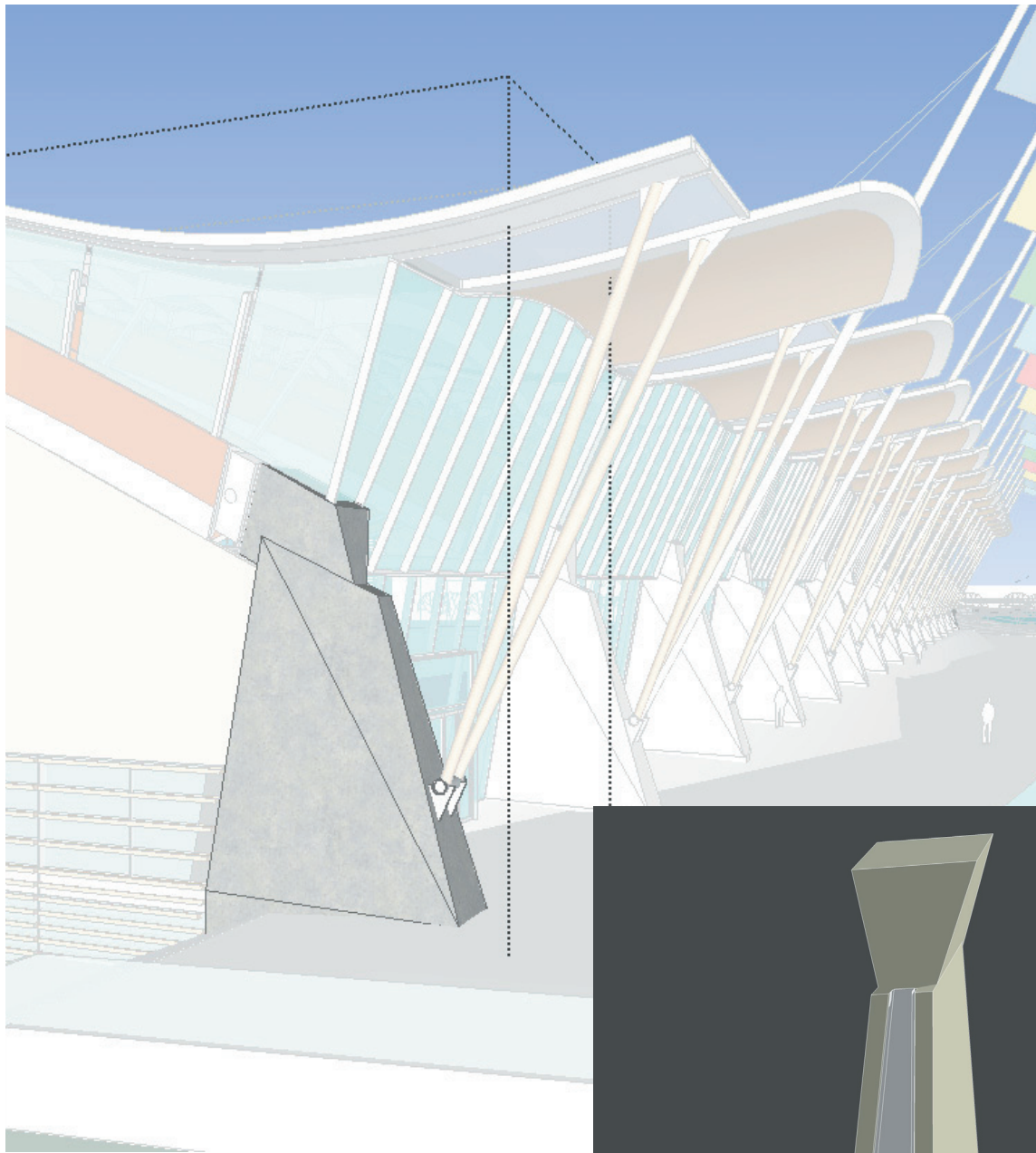
**Budget: \$25,000**

For artist's fees, limited consultation through the summer. As design develops, there may be an opportunity for further art dollar investment.

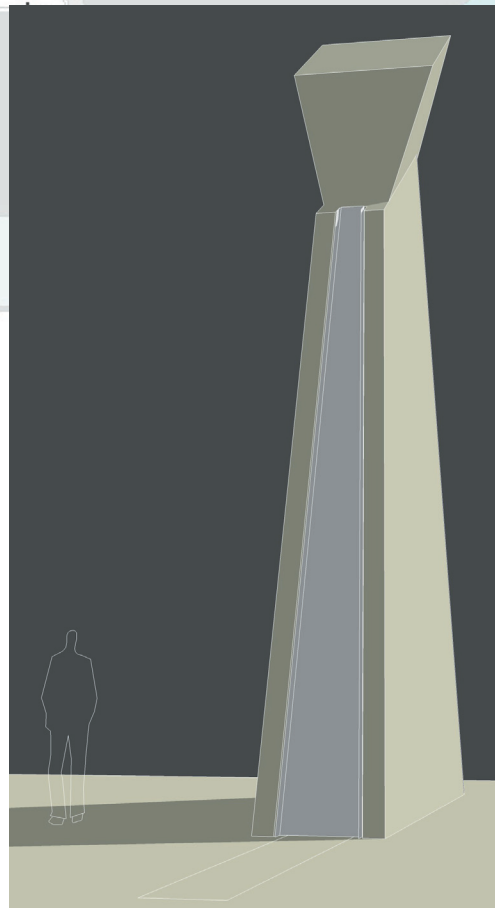
Selection Methodology: Direct Selection, Legacy Program

Location Reference: 1A refers to locator map





*The concrete buttresses are massive structural elements, and establishing human-scaled and intimate detailing at the pedestrian level will create a more welcoming facility.*



## 1B Concrete Buttresses

### *Contemporary Housepost Form*

Two elements have prominence in the Oval's exterior: polycarbonate skin and concrete buttresses. Because of their form and function, the concrete buttresses can be viewed as a contemporary interpretation of housepost forms, an important element in Salish culture. The buttresses also incorporate a storm water runnel that could be activated with articulated relief patterns. The concrete buttresses are massive structural elements, and establishing human-scaled and intimate detailing at the pedestrian level will create a more welcoming facility. To keep pace with the design/construction schedule, adequate language about casting relief patterns in concrete must be included in the upcoming concrete tender prior to selecting an artist and developing designs.

The Musqueam motifs will add meaning that is authentic to the site and the buttresses are an excellent place to express images of flow and flight. Determining the affected surface area will be balanced with the art possibilities on the entire site and available budget.

An expert with wide-experience translating relief sculpture into cast concrete on large public works projects — U.S. artist Vicki Scuri — will be retained to ensure that adequate language is included in the Oval construction documents to allow for the future inclusion of artist designs in the buttresses and runnels.

*The Public Art Work Group ranked this opportunity as a high priority.*



**Budget: \$2,500**

For artist's consultation for construction document language

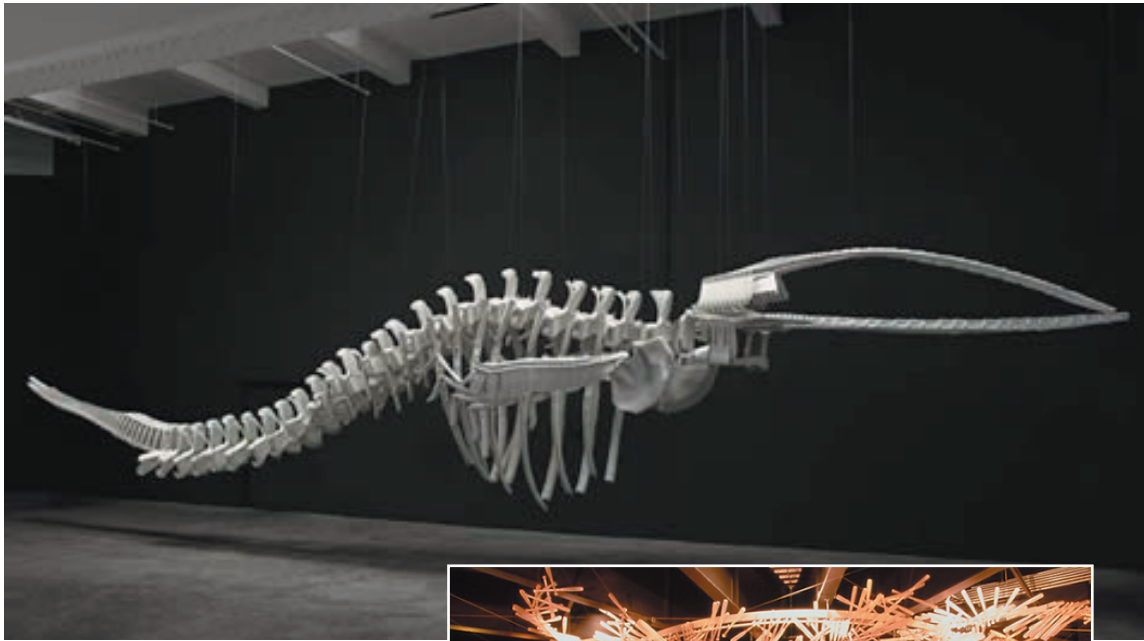
**\$125,000 to \$500,000**

For implementation based on relief complexity and overall surface area

Selection Methodology: Direct Selection for contract language, Limited competition for design

Location Reference: 1B





## 1C Lobby Suspended Sculpture

### *A Grand Arrival*

The tall atrium lobby is a good location for a significant work that needs a prominent, indoor location. Suspending the work will ensure that it does not impede crowds moving through the lobby during large events and it will be seen through the curtain wall glazing both day and night. Two monumental staircases focus attention up and the sculpture can reinforce the sense of arrival and motion. This work needs to be of a significant scale. Artists will be encouraged to incorporate lighting into their designs to activate the sculpture at night. Estimated structural loads based on other artworks of this scale have been provided to the design team. The artwork commission is one that can be undertaken at a later date as long as reasonable additional loads for suspended art have been taken into consideration as part of design and construction.

VANOC has begun to develop a program called Visiting Artists that is designed to encourage participating countries to include an artist on the team sent to Vancouver for the Olympic Games. Although the specifics of the program are still in development, this commission could be an opportunity to partner with VANOC (or a patron underwriter) and offer a high profile venue for a Visiting Artists commission. The budget ranges reflect the Public Art Work Group's desire to attract an internationally recognized artist for this important commission.

Structured as an international invitational competition, the selection panel for this commission should be comprised of some of the region's most accomplished art curators and patrons.

*The Public Art Work Group ranked this opportunity as a high priority.*



**Budget: \$250,000 to \$500,000**

+ additional funding provided through partnerships with corporate and private donors or VANOC

**Selection Methodology:** International, invitational competition. Explore options to partner with Visiting Artists or specific donor.

**Location Reference:** 1C







## The Oval Grounds: Memorable First Impression, Lasting Civic Catalyst

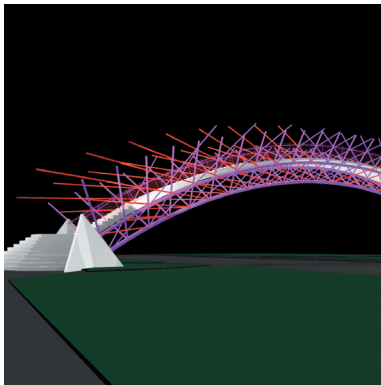
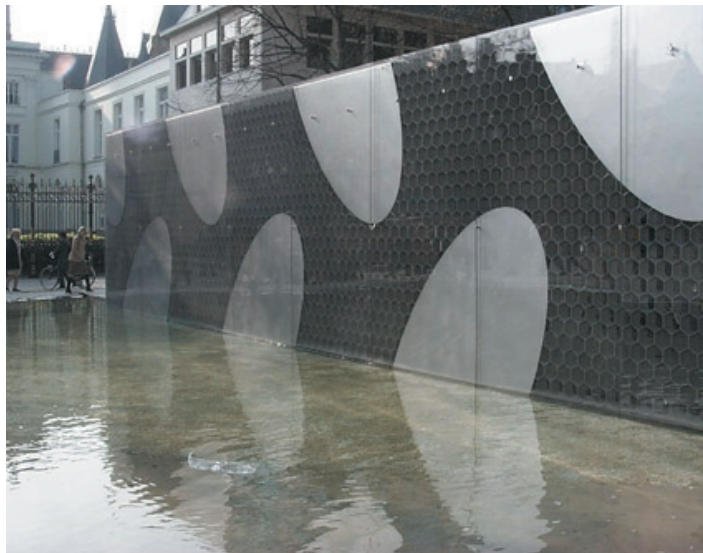
*Integrated & Site Specific Art Opportunities*

*An exciting, sophisticated urban waterfront village. That's the promise of the Oval design and the City's investment to catalyze smart growth and build an urban link to the City Centre. The Oval grounds – vast, varied and oriented towards natural views – is the urban park planned to serve the adjacent residential and retail communities, as well as international visitors to the City.*

The art opportunities described in this section, fully integrated to the broader urban planning goals and landscape design concepts, will establish the physical framework that is necessary to achieve the City's aspirations for this important civic undertaking.

- 2A Pedestrian Bridge:  
Connecting to the  
Urban Core  
High Priority
- 2B Water Works:  
Making a People Place  
High Priority
- 2C Sustaining Nature in  
the City
- 2Ca Water-Sky Viewpoint:  
Quiet Contemplation  
High Priority
- 2Cb Medicinal Garden:  
Musqueam & World  
Culture Healing  
Traditions  
High Priority
- 2D Riverfront Gathering:  
A Place for Community  
Gatherings Large &  
Small  
Secondary Priority
- 2E Legacy Plaza:  
Sculptural & Light  
Works  
Tertiary Priority
- 2F Street Furnishings,  
Lighting:  
Oval Precinct Fine  
Grain Details  
Tertiary Priority









## 2A Pedestrian Bridge

*Connecting to the Urban Core*

One of the most valuable aspects of Olympic partnerships and planning is the ability to stimulate smart growth and thoughtful development for many years to come.

The experience of arrival at the Oval and expressing its connection to a vital City Centre are important. Envisioned as entry to a new civic park and an international destination, the southeast corner of the Oval includes critical art and landscape opportunities that must work in concert with each other: the pedestrian bridge, the Hollybridge Canal vehicular bridge, the Water Works, and the Legacy Plaza.

The pedestrian bridge must be a strong and elegant sculptural feature in the landscape, reflecting the sophisticated urban quality of the Legacy Plaza. The bridge's form should serve as counterpoint to the naturalized landscaping of the detention system and adjacent Hollybridge Canal. The bridge should be inviting, celebratory and include human-scale tactile details. The theme of flow is particularly relevant to this commission.

*The Public Art Work Group ranked this opportunity as a high priority.*



**Budget: \$350,000 – 600,000**  
+ applicable construction credits

Selection Methodology:  
International competition or  
invitational

Location Reference: 2A



*The Water Works should express two distinct ideas. It acts as an ecological piece of functioning storm water infrastructure and as a dynamic, playful and engaging water feature.*



## 2B Water Works

### *Making a People Place*

Man's relationship to the cycles of the natural world has been a source of artistic inspiration since the earliest recorded images. Over the many centuries, artists moved away from depictions of the landscape to manipulating the land and water itself. Beginning with the shifts in political and social thinking in the 60s, environmental or "earthwork" art is now recognized as an important hybrid artform – part place, part landscape architecture, part environmental stewardship. There are several internationally recognized artists that specialize in this practice, finding opportunities for artistic expression in storm water detention systems, wetland reconstruction and eco system restoration. Reflecting the sustainability ideal, this plan proposes a significant environmental artwork as part of the storm water detention system on the Oval site. This project has the potential to serve as a catalyst for on-going education and stewardship projects designed to increase awareness of our region's watershed health.

This is design team collaboration with the landscape architects and calls for an artist with specialized skills in wetland detention and/or storm water management, bio remediation, sustainability and wet design. The Water Works should express two distinct ideas. It acts as an ecological piece of functioning storm water infrastructure and as a dynamic, playful and engaging water feature. The contrast between its bioremediation functions and its expression as an ever-changing water and light based artwork is at the heart of this commission. It should express motion, activity and an element of the unexpected. At night, the Water Works transforms the site with light, sound and the reflection of water.

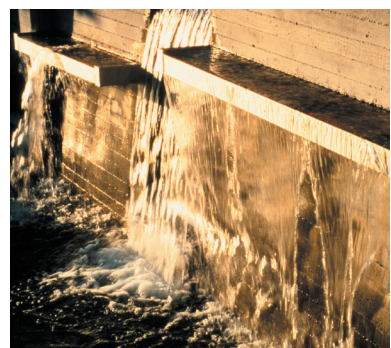
*The Public Art Work Group ranked this opportunity as a high priority.*



**Budget: \$600,000**  
+ applicable construction credits

Selection Methodology:  
International invitational

Location Reference: 2B







**Budget: \$175,000**

Selection Methodology:  
Legacy Program mentor  
working with local Musqueam  
Band

Location Reference: 2Ca



## 2Ca Water Sky Viewpoint

*Quiet Meditation at the Water's Edge*

A small seating area should be developed on the northwestern edge of the Oval site. It is a great location for airplane viewing, or just quiet contemplation near the river. As the waterfront developments unfold, gathering places for recreation and relaxation will be created adjacent to the dykes, enhancing downtown Richmond by linking it to a continuous urban fabric along the water. The Water Sky Viewpoint may be one of a series of such places beginning at the Oval site and extending along the river to No. 2 Road. The Oval's eastern edge is envisioned as highly urban, but as development moves west, the character of the experience transforms from formal, urban and civic to quiet, pastoral and naturalized. A canoe and kayak landing as part of the Viewpoint would activate the space and provide an additional cultural and recreational amenity; however, shoreline permitting may restrict this activity at the proposed location. The development of this place should be separated from the overall construction schedule in order to provide time for discussions within the Musqueam Band, design development and realization. A Musqueam artist should be hired to develop the design and oversee the implementation.

The Water Sky Viewpoint and the Medicinal Garden may be combined into one opportunity.

*This opportunity was ranked as a high priority by the Musqueam representatives to the Public Art Work Group, and endorsed by the Work Group.*

## 2C Nature in the City

### 2Cb Artists-in-Residence for Medicinal Garden

*Musqueam and World Culture Healing Traditions*

Many of the native species of the Pacific Northwest have healing properties and played an important role in the culture of the Musqueam, as well as other world cultures. In order to develop an artistic way to reveal this information, an artist-in-residence is proposed to work with the Musqueam Band to determine how best to reflect the use of native plantings for medicinal and health purposes. More than one artist could participate in this program in order to include artists from different cultural backgrounds. The artists may develop sculptural objects or interpretive material to be included at the Water Sky Viewpoint or as part of the eastern detention pond landscape or pedestrian paths. Selected artists should be encouraged to explore the mosaic of world cultures and their connection to the native plants of this region. This commission supports the education and cultural components of the Olympic Movement, as well as sustainability and LEEDS criteria, and may present opportunities to partner with VANOC.



**Budget: \$60,000 to 120,000**

May have partnership potential with VANOC.

Selection Methodology: Open competition, restricted to the Pacific Northwest

Location Reference: 2Ba





## 2D Riverfront Gathering

*A Place for Community Gatherings Large & Small*



Everyone on the project team recognizes that the transitional zone between the Fraser River dyke pathway and the hard-scape on the Oval's north plaza is a significant place within the grounds — in fact it is hoped that this north/northwest zone will become one of the great places in the Lower Mainland. Viewable from the No. 2 Road Bridge, the northern landscape in the foreground of the Oval will be a “signature” post-card view of the City of Richmond. Looking out from the grounds towards the water, this is the premiere sunset viewpoint. One test of a great place: is it a place where romance blooms? Places of grandness and intimacy must be created here.



This site should serve as a natural amphitheater, for fun and recreation, for weddings and family reunions. The site development should support festival and community uses that are critical for ensuring the success of the Oval grounds as a destination and vital urban park, and that serves the community gathering needs of the City. Using features in the ground plane to help mitigate and transition the scale of the building to a human scale is equally important.



People places feel comfortable and secure whether you are in a celebrating crowd of 200, or a quiet conversation of two. Achieving that on the Oval site requires some sort of companion structures to make the space feel somewhat more enclosed. These structures are viewed as changeable art/architecture, which can adapt for different events. The structures can be drawn from many different inspirations such as tents,

pit houses, sails, awnings, tea pavilions, farm sheds and cabins. The structures will be designed to support festival uses, and the park programming envisioned by the City. Small to mid-size site uses such as family picnics and reunions should also inform design. To make the place more welcoming for sunset viewing, places for fire pits should be considered.

There is an alternate approach to the art shelter idea: commission one grand, large-scale memorable “iconic” work of art for the area. This work of art would be a visual enticement to come to the Oval as it is seen along the dyke or from the No. 2 Road Bridge. This alternate idea does carry some risk since it would represent the largest single art commission ever undertaken by the City and it consolidates a large amount of funding into only one work. Also, the Oval site is difficult from an engineering perspective and any artwork development would be heavily influenced by those parameters.

If there is a desire to pursue the alternate idea then there are ways to mitigate the risks: 1) commission the work *after* the Oval is open when the grounds and site use are established, and 2) use a competitive paid proposal stage to determine the commissioned artist. In a competitive proposal process, three artists are hired to develop specific ideas for the place. The panel awards the commission for the best idea based on the submitted proposals. The artists are paid for the proposals to ensure that they have the time and resources to fully investigate the possibilities, work out a budget, talk to fabricators about technique and consult with an engineer about the technical difficulties of building on the Oval site. Waiting until the site is developed will allow the artist to respond to the scale and context of the Oval building and ensure that the proposed response is the right one. Waiting for a future date will also provide time for the festival uses and needs to be more fully understood.

*The Public Art Work Group ranked this opportunity as a secondary priority.*



**Budget: \$500,000 –  
1,000,000**

+ applicable construction  
credits

If a significant work is to be  
commissioned, add \$60,000  
for proposal fees, engineer  
consultation and finalists’  
travel.

Selection Methodology: Open,  
international competition for  
the shelters. If sculptural works  
are commissioned in the future,  
an international competitive  
proposal development selec-  
tion is recommended.

Location Reference: 2D