



City of Richmond

Report to Committee

To: Parks, Recreation and Cultural Services
Committee

Date: September 5, 2013

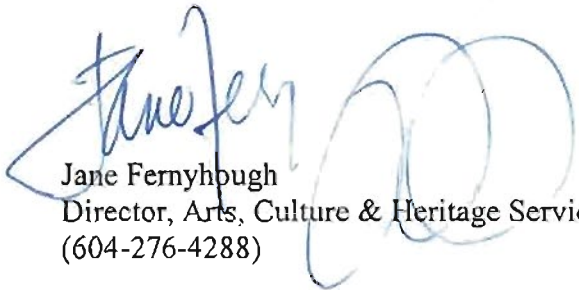
From: Jane Fernyhough
Director, Arts, Culture & Heritage Services

File:

Re: Richmond Heritage Update 2012-2013

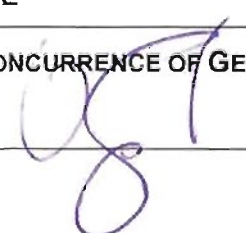
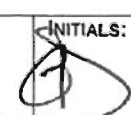
Staff Recommendation

That the Richmond Heritage Update 2012-2013 as presented in the report from the Director, Arts, Culture and Heritage dated September 5, 2013, be received for information.



Jane Fernyhough
Director, Arts, Culture & Heritage Services
(604-276-4288)

Att. 1

REPORT CONCURRENCE			
ROUTED TO:	CONCURRENCE	CONCURRENCE OF GENERAL MANAGER	
City Clerk	<input checked="" type="checkbox"/>		
Parks Services	<input checked="" type="checkbox"/>		
Policy Planning	<input checked="" type="checkbox"/>		
REVIEWED BY DIRECTORS	INITIALS: DW	REVIEWED BY CAO	INITIALS: 

Staff Report

Origin

In June 2007, Council approved the Museum and Heritage Strategy vision, goals and objectives to provide an effective and realistic strategic framework that directs Richmond's development and integration of its museum and heritage policies and services.

This report presents the Richmond 2012-2013 Heritage Update (**Attachment 1**) to Council for information.

This report supports Council Term Goal 9.0:

Continue to support the development of a thriving, resilient and diverse cultural sector and related initiatives in creating a vibrant healthy and sustainable City.

Analysis

Richmond is growing rapidly and the increasingly diverse population has created new demands for services. This is particularly notable in the cultural sector where there is a desire to provide services and programs, but also an economic imperative as culture is an important economic generator through the provision of employment and tourism opportunities.

Arts, Culture and Heritage enhance our city and our lives in many unique ways and are central to community life. They provide communities with a sense of identity, a sense of place and shared pride while creating ways to communicate across multicultural boundaries.

The Richmond 2012-2013 Heritage Update showcases the varied and vital investment in Museums and Heritage and the essential role these play in building and sustaining a diverse urban community that is socially and economically healthy.

Financial Impact

There is no financial impact to this report.

Conclusion

The Richmond 2012-2013 Heritage Update highlights the activities and achievements of the City, stakeholders and community partners from January 2012 through June 2013. It also demonstrates the vital contribution Museums and Heritage make to the livability of our community.



Connie Baxter
Supervisor, Richmond Museum and Heritage Services
(604-247-8330)

HERITAGE UPDATE 2012-2013

Arts, Culture and Heritage Services

ATTACHMENT 1



Introduction

Richmond continues to be a city that proudly celebrates its past, present and future.

As described in the 2041 Official Community Plan (OCP), many factors contribute to making Richmond a vibrant, healthy, sustainable and engaged community and the presence of a thriving arts, cultural and heritage sector plays a critical role.

The City owns and operates a number of museums and heritage sites, and supports other heritage sites that interpret Richmond's history. Many other heritage assets throughout the city are privately-owned or fall under the mandate of other levels of government.

Arts, Culture and Heritage Services, the City of Richmond Archives, Policy Planning and Parks Services all share responsibility in the stewardship of the City's heritage resources. Through partnerships with community societies and a Council-appointed Heritage Commission, staff are committed to preserving, interpreting and promoting existing cultural and heritage resources and activities. The exhibitions, educational programming, public programming and special events, volunteer opportunities and collections managed and presented by the City's museum and heritage staff and partners increase public awareness of Richmond's rich past and present, enhance quality of place, build a sense of community connectedness and engage citizens across generations to impact Richmond's future.

The activities and achievements of Museum and Heritage Services support Council Term Goal 9.0:

Continue to support the development of a thriving, resilient and diverse cultural sector and related initiatives in creating a vibrant healthy and sustainable City.

This update provides highlights from Museum and Heritage Services for January 2012 through June 2013.

Table of Contents

3	Introduction
4	Signature Events
9	Branscombe House
10	Britannia Shipyards National Historic Site
13	Cenotaph
14	London Heritage Farm
16	Minoru Chapel
17	Richmond Museum
25	Steveston Interurban Tram Building
27	Steveston Museum and Visitor Centre and Japanese Fishermen's Benevolent Society Building
30	City of Richmond Archives—City Clerk's Office
31	Richmond Heritage Commission—Policy Planning Division
33	Heritage in Parks
34	Public Art
35	Gulf of Georgia Cannery National Historic Site
36	Statistics

Signature Events

Doors Open Richmond

Doors Open Richmond is an annual two-day event coordinated by the Richmond Museum, which encourages visitors to explore Richmond's arts, culture and heritage through free access to places and programs.

Doors Open Richmond 2012

On May 5–6, 2012, Richmond launched its fifth successful *Doors Open Richmond* event showcasing the great diversity of arts, culture, heritage and parks in our city. Forty-eight partners from various sectors of the community came together at thirty-eight sites for this free city-wide event. New partners in 2012 included: Richmond Public Library, Rufus Lin Gallery of Japanese Art, Richmond Family Place, Rotary Hospice House, Steveston Firehall No. 2, and the Terra Nova—Public Art Project. Over 200 volunteers provided a total of 1,300 volunteer hours in support of a program that attracted close to 18,000 site visits.

The *Imaginary Enclave* opening celebration for *Doors Open* featured performances by the Vancouver International Bhangra Celebration. In conjunction with the exhibition, *My Big Family*, by emerging artist Hua Jin, Richmond Art Gallery presented a performance by Juno-nominated *Orchid Ensemble*. Local Bollywood dancers teamed up with Cinevolution Media to bring magical footage to the Richmond Media Lab from *Gardens of Bollywood*. In conjunction with the popular travelling exhibition, *Edo: Arts of Japan's Last Shogun* Age, Richmond Museum presented

a performance of Japanese traditional and new music by Maru's Alcvin Ryuzen Ramos and Eien Hunter-Ishikawa.

As a testament to the growing visibility and success of *Doors Open Richmond*, a team from Calgary visited during Richmond's event to inform planning for the first ever *Doors Open Calgary*. They were most attracted to Richmond because of the event's "inclusive and diverse arts, cultural and heritage model".



Women pray at Nanaksar Gursikh Temple during Doors Open Richmond 2012

Photo: C.Y.M. Ng



Maru's Alcvin Ryuzen Ramos and Eien Hunter-Ishikawa during Doors Open Richmond 2012

Photo: Peter Harris

Doors Open Richmond 2013

On May 4–5, 2013, Richmond launched the sixth *Doors Open Richmond* event. Fifty-six local partners showcased Richmond's diversity of arts, culture, heritage and parks, opening their doors to programs and displays at forty-nine sites throughout the community. New partners in 2013 included: Az-Zahraa Islamic Centre, Karen Lorena Parker, Steves Family Farm, Scotch Pond Heritage Cooperative, Thragu Monastery, Science of Spirituality Meditation and Ecology Centre, Sirotta's Alchymy Martial Arts Centre, Our Saviour Lutheran Church, Helijet International Terminal & Hangar, Aphrodite Blagojevic and South Arm United Church. *Doors Open* volunteers totalled 287, contributing 1,855 volunteer hours in support of a program that attracted 25,148 site visits.

The kick off celebration for *Doors Open Richmond* was held in conjunction with the new Steveston Interurban Tram Building Opening. The approximately 800 visitors attending the celebration were invited to board the Interurban Car and enjoy displays of interurban artefacts and archival photographs and film, as well as entertainment from Tetsu Taiko drummers and the 1930's jazz of the Jen Hodge All Stars. A PechaKucha night at Rocanini Coffee Roasters, hosted by Richmond Public Art, also brought artists, architects and heritage professionals together for lively presentations to celebrate *Doors Open Richmond*.



Taiko Drummers at the Steveston Interurban Tram Building Opening and kick-off celebration to Doors Open Richmond 2013

Photo Peter Harris



Doors Open 2013 volunteer at Helijet International Hangar and Terminal

Photo: F. Dominguez

2012–2013 Heritage Update

Richmond Delta Regional Heritage Fair

The *Richmond Delta Regional Heritage Fair* is a celebration of Canadian history and heritage through student history projects. In May, outstanding projects from across Richmond and Delta are showcased at the *Regional Heritage Fair*. Those students who created these projects are invited to participate in a two-day program of field trips and heritage activities.

Richmond Delta Regional Heritage Fair 2012

Continuing our long-standing partnership with the Delta Museum and Archives, the Richmond Museum presented the 10th Annual *Heritage Fair* in May 2012. With over 80 student project displays created by 133 students from local independent and public schools, this year's fair featured the largest project showcase in the history of the Heritage Fair program in Richmond.

The 2012 fair featured an Aboriginal workshop on medicine pouch teachings, facilitated by local First Nations educator, Roberta Price. Each workshop began with a Sharing Circle, a ceremony that involves the use of a sacred eagle feather. Students learned about the spiritual power of the medicine pouch before making their own out of leather and beads.

Students also visited Britannia Shipyards National Historic Site and Gulf of Georgia Cannery National Historic Site, where they gained a deeper appreciation for local history and greater insight into fascinating stories from their own communities.

Five students were selected to represent the Richmond-Delta region at the Provincial Fair in Abbotsford, June 29–July 3.



Medicine Pouch Teachings Workshop facilitator—Roberta Price, 2012

Photo: Clare Bekenn



“We chose this project because it was a great opportunity to learn about our family’s past.” , 2012

Photo: Abby Manuel



“The source I used was the Richmond Archives, which gave me vital information. Wikipedia was not so helpful because it gave me a whole page of not so important information.” , 2012

Photo: Abby Manuel



Field trip to Britannia Shipyards, 2012

Photo: Clare Bekenn

Richmond Delta Regional Heritage Fair 2013

The Richmond Museum presented the 11th Annual *Richmond Delta Regional Heritage Fair*, featuring a record-breaking 123 student project displays exploring a variety of local, regional, provincial and national topics.

New partnerships with UBC's *Chinese Canadian Stories* and Dr. Sun Yat-Sen Classical Chinese Garden resulted in unique workshops for students. Students also took a field trip to the Steveston Interurban Building and engaged in multicultural heritage crafts and workshops in Minoru Plaza.



Heritage Fair Project—Esha Sodhi, 2013

Photo: Kathryn Stewart



Heritage Fair Field Trip—Interurban Tram, 2013

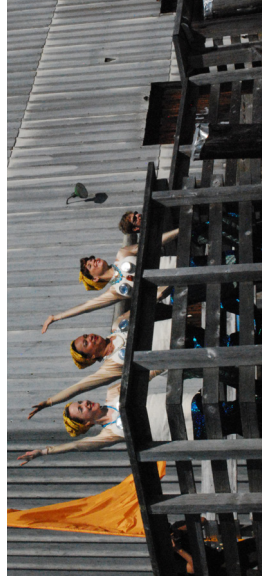
Photo: Sue Legault

Maritime Festival 2012

The 9th Annual *Richmond Maritime Festival* in August celebrated Richmond's connection to the sea. 35,000 visitors enjoyed an exciting renewed and re-imagined festival that offered all kinds of seafaring, nautical fun. Visitors wandered a "live" site, where they encountered an array of inspiring installations, entertainment, costumed characters and interactive displays that highlighted maritime history and local lore.

The exhibit *At the Helm* was reinstalled for temporary viewing during the *Maritime Festival*. The exhibit, which showcases the ingenuity and innovation of brothers Jack and Joseph Lubzinski, who captured the North American ships wheel market for over 50 years, was located in the Seine Boat Loft and offered a rare opportunity for visitors to explore the net loft and learn of this fascinating Richmond story.

During the *Maritime Festival*, Parks and Britannia staff coordinated a press conference to highlight the work of the crew aboard the visiting tall ship *Kaisei*. Reporters and photographers in attendance learned about the *Kaisei's* dedication to raising awareness and implementing solutions regarding the global problem of marine debris.



Singing mermaids at the Maritime Festival, 2012

Photo: Brooke Lees



Kaisei at Maritime Festival, 2012

Photo: Brooke Lees

Branscombe House

Branscombe House is a 1906 Edwardian farmhouse adjacent to the former Interurban Electric Rail right-of-way, and a former station, Branscombe Station. Acquired by the City in 1987, it was in a state of deterioration and required preservation to protect, maintain and stabilize the existing form, material and integrity of the building. Restoration of the significant heritage features was also required so that the house could be complementary to the proposed new use on the Railway Avenue Greenway. A creative and innovative funding strategy involving philanthropical and in-kind labour has enabled the City to initiate the required work to conserve and protect this valued heritage resource. As part of the design for the Railway Avenue Greenway, a complete design of the entire site is being undertaken to ensure that public access to the building is available and complements the site.



Branscombe House, ca. 1928

City of Richmond Archives Photo #1991 42 1

Britannia Shipyards National Historic Site

Exhibitions and Public Programming

Doors Open Richmond 2012

During the *Doors Open* event, Britannia entertained over 4,000 visitors with guided tours and interactive games in the Chinese Bunkhouse. Visitors explored the stories of the Chinese cannery workers, and tried their hand at five different traditional Chinese games. Visitors and volunteers were engaged and excited, and the building was roaring with laughter for the entire event. In addition, the Steveston Maritime Modellers group exhibited their scale model wooden boats for visitors to admire and chat to group members about.

Doors Open Richmond 2013

Over 2,000 people visited Britannia and took part in tours of museum buildings and special programming throughout the site. Visitors enjoyed Japanese Ikebana workshops in the kitchen of the Murakami House, and had their names written out by a Chinese calligrapher inside the Chinese Bunkhouse. Hundreds of people also looked in on volunteers working on the restoration of the *Merrilee II*, a wooden vessel under repair in the Richmond Boatbuilders building, and talked with the Steveston Maritime Modellers group about their fascinating small-scale model boats.

Author Reading

In June 2012, author Susan Aihoshi read from her newest book, entitled *Torn Apart: The Internment Diary of Mary Kobayashi*, to an emotional audience at Britannia. After the reading, visitors conversed with Susan, purchased books, and toured the Murakami House to learn more about the internment experiences of the Japanese families in Steveston.

Ships to Shore 2012

In June 2012, 7,000 *Ships to Shore* visitors at Britannia were greeted with guided tours and hands-on programming. Britannia's docks were open, and dock safety volunteers toured visitors aboard wooden vessels on the floats. Visitors also interacted with staff and volunteers during the *What Is It* program, which allowed visitors to handle historic objects and hypothesize about their importance to the Britannia site.

Ships to Shore 2013

Approximately 5,000 visitors to Britannia during *Ships to Shore 2013* enjoyed viewing and boarding historic wooden vessels. Many visitors took part in the *Voices of Britannia* community engagement project by talking with staff about their memories of Britannia and creating 'word boats' that showcased their one word choice to best describe the site. Visitors also enjoyed author presentations by Don Pepper, who shared stories about fishing life from a bygone era from his book entitled *Fishing the Coast*.



Hawaiian Chieftain at Ships to Shore, 2012

Photo: Christina Lazar-Schuler

Maritime Festival

The exhibit *At the Helm* was reinstalled from June to August to allow for temporary viewing during the 2012 Maritime Festival. The exhibit showcased the ingenuity and innovation of brothers Jack and Joseph Lubzinski, who captured the North American ships wheel market for over 50 years.



At the Helm exhibit, 2012

Photo: Brooke Lees

Grand Prix of Art

In September 2012, Britannia hosted the 3rd Annual *Grand Prix of Art*, which gathered over 60 local artists in a competition to paint Plein Air pieces across Steveston within a time limit of three hours. The artworks were adjudicated and showcased to the public in the Chinese Bunkhouse. The event attracted over 500 visitors to Britannia, and this year involved several local youth artists.

Culture Days

During *Culture Days* in September 2012, over 1,000 visitors to Britannia enjoyed *Inside the Britannia Shipyards*, where tour guides led groups through buildings and highlighted new research and background information about work that went into building restoration and exhibit development. In addition, free sessions entitled *The Making of Salmon Row* were offered by the Mortal Coil Performance Society. During these sessions, visitors learned about Britannia's site specific play *Salmon Row*, set for reinstallation in the summer of 2013. Members of the Mortal Coil artistic team discussed the role of history and politics in theatrical historical pieces, the relationship between site and project, commissioning work for site specific theatre, and the influence of community in site specific theatre. Props and costumes from the production were also presented during the sessions.

New Initiatives

Re-organization

During the City-wide departmental reorganization in June 2012, Britannia successfully transitioned from Arts, Culture and Heritage into the Parks Division.

Design of New Promotional Materials for School Program

In February 2012, in an effort to attract new teachers to book school programs and education kits, staff from Britannia, Richmond Museum and the City's Production department began a project to redesign the Richmond Museum and Heritage Sites school program brochure. The result is a fresh, clean and well-organized promotional package that has been well-received by schools in Richmond, Vancouver and Delta.

New Staff Position

The Visitor Services Associate position was hired in November 2012. This full-time role involves coordinating site bookings and rentals, supervising and scheduling attendant staff and volunteer management, including recruiting, training and scheduling. The position has enabled a higher level of administrative organization, standardization of training materials and a consistent level of excellent customer service.

Seine Net Loft Upgrades

In anticipation of upcoming building upgrades, in late 2012 both the Seine Net Loft and Phoenix Net Loft buildings were assessed, cleaned up and artefacts carefully relocated by Britannia staff, Parks crews, and Richmond Museum curatorial staff. Starting in the summer of 2013, the Seine Net Loft will be programmed with exhibits for the public to enjoy during special events.

Voices of Britannia

Voices of Britannia: The People, the Stories and the Future is a community engagement exhibit project implemented in 2013 designed to gather and reveal the voice of the community by creating opportunities for visitors and community members to share their memories and visions of Britannia. Stories, suggestions and visions were gathered through questionnaires, interactive activities and engaging temporary exhibits. Through this community collaborative process, voices of the community were collected and utilized to create an interactive exhibit inside the Seine Net Loft, including a community mural created on a lifeboat cover. The intention of the exhibit was to celebrate the community's contribution and showcase images of people from Britannia's past and present.

The data gathered through this project will reveal the collective community voice—their connection to Britannia and their vision for Britannia's future. This information will reveal valuable insight into how recent programming initiatives have been received and suggest how to best engage the community moving forward.



Community mural, part of the Voices of Britannia exhibit, 2013

Photo: Brooke Lees

Culture Makes Communities Tour

This new experience, to be rolled out during the summer of 2013, allows visitors to discover firsthand the multicultural history of the Britannia site through interactive, multi-sensory experiences. Tour participants delight their taste buds with bannock and salmon at the First Nations Bunkhouse, sample Japanese tea for good health in the Murakami house, sand paddles in the Shipyard, listen to colourful stories and music in the Manager's house and oral stories in the Men's Bunkhouse, eat salt fish and rice as the Chinese workers did in the Chinese Bunkhouse and receive a free gift of a poem and recipe at the Point House.

Funding

A grant was awarded from Western Economic Diversification Canada under the Community Infrastructure Improvement Fund for \$250,000 towards the Seine Net Loft restoration and rehabilitation. The work is expected to be completed by the end of summer 2013.

The Britannia Heritage Shipyard Society received a City Arts Grant for the restoration of a 1950's pleasure craft, the *Merrilee II*. The grant funds will go towards restoration materials as well as a film documentary following the restoration project exploring the role of the Society in the local boat building community.

Service Level Statistics

Attendance

Britannia welcomed a total of 85,600 visitors in 2012:

- Summer walk-ins: 25,000
- Winter walk-ins: 10,000
- School and Group Tours: 1,600
- Rentals: 4,000
- Special Events/Festivals: 45,000

Summer camps and drop-in programs were a great success, with registration at capacity for every program.

For the first half of 2013, over 23,800 visitors attended the site.

Cenotaph

Volunteer Program

Volunteerism at Britannia was at an all-time high for the 2012 summer season (May 1–September 30). Approximately 250 volunteers logged over 3,500 hours to support special events, programs and site tours.

Between May (when Britannia opened for summer operating hours) and the end of June 2013, 150 volunteers logged approximately 1,000 hours.

Filming

Britannia hosted a number of film projects in 2012, including *Supernatural*, *Once Upon A Time*, *The Selection*, *Fringe*, *Bates Motel* and several TV commercial shoots.

Once Upon a Time, *Bates Motel* and *Psych* filmed on location at Britannia during the first half of 2013.

In partnership with the Royal Canadian Legion, the Richmond Museum oversaw the names of fallen soldiers from the First World War, Second World War and Korean War placed on the Cenotaph.



Names are carefully applied to the Cenotaph

Photo: Peter Harris

London Heritage Farm

Public Programming

Programs and Tours

Educational programs and historical tours of the farmhouse and grounds are available for visitors to discover how life was in the late 1800s and early 1900s in Richmond.

In 2012, 22 school classes came for an historical tour of the house and property, and 31 seniors' groups came for tea and a tour. Over the Christmas season, eight groups came for tea and tours.

Between January and June 2013, 20 school classes and five seniors' groups toured the farm.

Tea Room

The Tea Room is a popular spot for locals and visitors alike, providing a variety of homemade baking served along with a full tea service that features *London Lady Tea*, a special blend made at the Farm. The on-site gift shop offers collectibles and crafts made by local artisans.

In 2012, *Mother's Day Tea* welcomed 200 visitors, and programming included additional themed teas such as *Halloween* and *Valentine's Day Teas*. A total of 2,850 visitors came for tea service in 2012.

So far in 2013, tea and homemade baked goods have been served to 1,683 visitors. Special themed tea events included *Chinese New Year*, *Easter Tea* and *Mother's Day Tea*.

Special Events

Special events in 2012 included the *Annual Plant Sale*, which generated sales of over \$8,000, and the *Family Farm Fair* in August, which drew in approximately 1,200 people. London Farm was also a venue for this year's *Fraser River Art Festival* and an *Antiques & Collectibles Sale*. *Culture Days* visitors enjoyed demonstrations and displays of quilting, spinning and weaving. For two weeks before Christmas, volunteers provided music and Christmas carols to add to winter festivities.

Special events up to June 2013 have included the ever popular annual *London Farm Plant Sale*, held in May on the Mother's Day weekend, which brought in several hundred visitors and resulted in a profit of \$8,500.00. During *Culture Days 2013*, more than 1,000 guests visited the farmhouse and gardens and learned about the history of the farmhouse and family.

London Heritage Farm continues to be very busy over the spring and summer months with many weddings, picnics and birthday celebrations.

Doors Open Richmond

London Farm was a venue partner with *Doors Open Richmond* in 2012 and 2013, offering a wonderful opportunity to showcase London Heritage Farm. Visitors viewed the heritage gardens, chickens, pond, community gardens, orchard bees, and an interpretive display of large agricultural machinery. The furnished farmhouse, with display rooms and costumed staff, as well as the heritage style Gift Shop and Tea Room, were open to the public. Over 800 people visited the site over the two-day event in 2012, and 859 visitors were welcomed during *Doors Open Richmond 2013*.



Teapot at London Heritage Farm

Photo: London Heritage Farm

New Initiatives

Building Upgrade

In 2012, an accessible washroom was installed in the farmhouse in consultation with a Heritage Architect.

Visitor Counter

New to London Heritage Farm in mid-2012 is a counter, installed in the heritage house, that records the number of visitors to the house. This counter will give staff a more accurate picture of the number of visits to the site, not only during special events, but also more casual visits throughout the year.

London Heritage Farm Society

In 2012, the Society worked diligently to organizing their artefact collection with the assistance of an intern. This work will continue in 2013 with the support of the City-wide Artefact Collections Committee.



Agricultural equipment at London Heritage Farm

Photo: S. Satzer

The Society achieved full Allotment Garden registration, and increased the volume of weddings and other large events at the Farm. A Gift Shop Committee was established with a mandate to increase sales in the Gift Shop and a Tea Room Committee was formed to oversee the tearoom operations. New Christmas lights were installed to highlight the Farm during the Christmas season.

Service Level Statistics

Rentals and Weddings

Twenty-eight weddings took place at the farm in 2012, and ten other groups came for picnics and birthdays.

Volunteers

In 2012 volunteers contributed 9,000 hours of service. From January to June 2013, London Heritage Farm Society volunteers have dedicated 4,000 hours to the Farm.



Chickens at London Heritage Farm

Photo: London Heritage Farm



Farmhouse at London Heritage Farm

Photo: Peter Harris

Minoru Chapel

Public Programming

Doors Open Richmond

As part of the city-wide free event in 2012, Minoru Chapel welcomed over 250 visitors. During *Doors Open Richmond* 2013, 169 visitors discovered Minoru Chapel.

Opera Series

This series, featuring classic opera music performed in the historic Minoru Chapel, presented both a spring and fall season in 2012 and so far, a spring season in 2013. Both matinee and evening performances were offered, some of which sold out.



Doors Open Richmond, 2012

Photo: Jorge Ligason

In March, April and May of 2012, audiences enjoyed opera hits performed by Vancouver Opera, Burnaby Lyric Opera and DragonDiva Operatic Theatre. The fall season was the most exciting and ambitious to date, with the addition of a fourth concert. Between October 2012 and January 2013, the chapel hosted concerts by Vancouver Cantonese Opera, who performed excerpts from *The Legend of the Purple Hairpin*; City Opera Vancouver, who presented a concert devoted to the works of Giuseppe Verdi; Opera Pro Cantanti for their second annual holiday-themed program and Vancouver Concert Opera Society, who performed *Die Fledermaus*.

The Spring 2013 season featured Burnaby Lyric Opera performing *Rigoletto*, Vancouver Opera's *An Opera Tea* and, new to Minoru Chapel, Opera di Concertisti presenting the comic opera, *La Fille du Régiment* in March, April and May, respectively. The programming for the annual Fall season will be announced in September.



Stained glass windows of Minoru Chapel

Photo: K. Farrell

Service Level Statistics

Weddings/Events

In 2012, 130 weddings, memorials and baptisms were held at Minoru Chapel. From January through June 2013, 39 weddings, memorials and baptisms were held.



Winter wedding at Minoru Chapel

Photo: The Chapel Group Enterprise Inc.

Richmond Museum

Exhibitions

Edo: Arts of Japan's Last Shogun Age (1603–1868) (February 9 – May 21, 2012)

Edo: Arts of Japan's Last Shogun Age (1603-1868) featured art and artefacts from the Art Gallery of Greater Victoria's extensive Japanese collection, and works on loan from the Canadian Museum of Civilization as well as from private individuals.

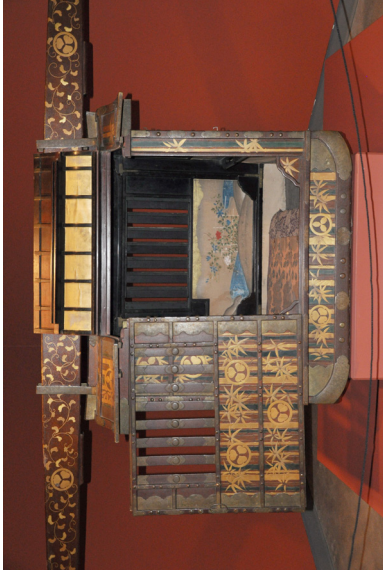
This exhibit drew upon a wide variety of Edo period art, notably paintings, prints, ceramics, lacquerwares, metal wares, textiles, religious art, a palanquin chair and samurai armour. These works of art and artefacts revealed the life and customs of the Edo period.

The Richmond Sister City Committee sponsored the Opening Reception of the exhibit. Barry Till, Curator of Asian Art at the Art Gallery of Greater Victoria, curated the exhibit.



Volunteer Desmond Hung assists curatorial staff with unrolling a scroll

Photo: Peter Harris



Palanquin chair with the Tokugawa family crest from the Edo period

Photo: Peter Harris



Protective suits worn by samurai warriors during the Edo period

Photo: Peter Harris



2012–2013 Heritage Update

Garden City: Richmond's Agricultural Legacy (June 21 – October 21, 2012)

This exhibit invited visitors to explore Richmond's agricultural history from its early days to the modern industry it is today. The exhibit examined how farming has transformed the Lulu and Sea Island delta, and featured information about Richmond's agricultural past. For instance, Richmond dairies, a significant industry, once supplied Vancouver markets with milk by wagon without refrigeration.

The exhibit touched on a variety of topics from early pioneer farming history to Richmond's diverse crop and livestock production to today's food security concerns. Objects used to tell the story of Richmond's agricultural legacy included the Grauer (Fraser Farms Ltd.) milk wagon, a 1950s tractor, a cranberry scoop and heritage seed equipment on loan from the Steves Family.



Garden City: Richmond's Agricultural Legacy exhibit

Photo: Peter Harris



Original Grauer (Fraser Farms Ltd.) milk wagon

Photo: Peter Harris

Highway to Heaven: Richmond's Multifaitth Community (December 8, 2012 – July 1, 2013)

This exhibit highlighted artefacts and photos on loan from some of Richmond's faith-based community groups, and examined Richmond's diverse religious and spiritual heritage. The Richmond Museum invited religious and spiritual groups to participate in the *Highway to Heaven* exhibition, and 41 faith-based groups came forward to share stories.

Commonly referred to as the Highway to Heaven, Richmond's No. 5 Road is home to community churches, mosques, religious schools, and temples. As a tribute, the museum exhibit featured a 50-foot "highway" display sculpture created for the exhibit by co-sponsors, the Ebco Group of Companies, thanks to Ebco co-founders Helmut and Hugo Eppich.

Following the opening reception, a special ceremony in the Cultural Centre Plaza marked every night of Hanukkah with the lighting of one of the world's largest Menorahs designed by the late Arthur Erickson, fabricated by Ebco Industries Ltd. and donated to Eitz Chaim Synagogue of Richmond.



Highway to Heaven: Richmond's Multifaitth Community exhibit

Photos: Peter Harris

Walk for Memories Display

In January 2013, the Richmond Museum was invited to create a display at the Walk for Memories founded by the Alzheimer Society of British Columbia and presented in collaboration with Investors Group Financial, I.G. Financial and Great-West Life Assurance Company. The Museum displayed artefacts that focused on Richmond's transportation history and asked visitors to record their memories of different methods of transport.



Curatorial staff member, Camille Owens, dresses a mannequin in a Flight Attendant Uniform as part of the Walk for Memories Display, 2013

Photo: Rebecca Forrest

Collections Management

In 2012, the Richmond Museum was the recipient of 32 donations consisting of over 200 artefacts. New to the collection this year were artefacts from the Save Richmond Farmland Society, the Steveston Interurban Restoration Society and a complete set of 1950s dental office furniture and

equipment that was used in Richmond. Also new to the collection are items salvaged from many of Richmond's heritage buildings and sites including wallpaper samples from Branscombe House and bottles and domestic objects from the Tram Building site.

Additions to the Richmond Museum's contemporary artefact collection include an iMac computer, the first digital camera used by the Richmond News and modern "heritage seeds" and agricultural products donated by West Coast Seeds.

From January to June 2013, The Richmond Museum received 17 donations representing 174 objects. Donors have brought in items ranging from the post-war household items of a Steveston Japanese family, to a pilot's license and log book from 1954 and a set of three flight attendant uniforms from 1964 and the 1970s. From various City departments, the Museum has received 2010 Olympic material, a planimeter from City engineers and traffic signal lights from the Transportation Department.



Wallpaper sample from Branscombe House

Photo: Rebecca Forrest

City-wide Artefact Collection Committee

In partnership with the Britannia Heritage Shipyard Society, London Heritage Farm Society, Richmond Museum Society and Steveston Historical Society, a City-wide Artefact Collections Committee has been formed. The Committee meets bi-monthly and will provide a coordinated and efficient care and management approach for artefact collections related to City-owned museums and heritage sites.

In 2013, the Committee has met regularly to discuss such topics as pest control, artefact acquisition and deaccession protocols. The Committee's upcoming goals include creating a city-wide collections information brochure and standardizing our collection management forms.



The Richmond Museum received a donation of a 1950s dental chair that was once used in Richmond

Photo: Rebecca Forrest

2012–2013 Heritage Update

City-wide Cultural Assets Management System

The Richmond Museum, Richmond Art Gallery and Media Lab, in partnership with the City IT Department, are jointly seeking out a new cultural assets database. This database will provide opportunity for City artefacts, artworks and media works to be organized and tracked and legal documentation to be produced.



These bottles, fork and piece of leather were found buried on the site of the Interurban Tram building

Photo: Rebecca Forrest

Public Tours

The Museum continues to provide tours of the artefact collection storage warehouse as part of *Culture Days*, the *Richmond Delta Regional Heritage Fair* and spring and summer daycamps.

Educational Programming

The Museum offers curriculum-based programs that encourage students to engage with local history while developing historical thinking skills. To respond to the diverse needs of teachers and other educators, the Museum provides both education kits tailored for use in the classroom and field trip programs that bring classes into the Museum and local heritage sites. In spring and summer, the Museum offers unique daycamp programs that engage children in local history and heritage. The Museum also offers professional development workshops for teachers, administrators and other educators.

In 2012, 1,409 children participated in the Museum's educational programs. Nearly 1,000 children participated in the Museum's educational programs from January to June 2013.

Spring Break Camp

The Museum's signature Spring Break Camp introduced children to the fascinating world "behind-the-scenes" of their local museum. In 2012, twenty children and youth learned about artefact conservation and exhibit installation and then created their own exhibit for public display at the Richmond Cultural Centre. In 2013, 19 participants curated their own exhibit displays—*Interurban Tram* at the Richmond Cultural Centre and *Hong Wo Store* at City Hall.



The Spring Break Camp 2012 exhibit on Japanese children in Richmond, created by youth ages 9–12

Photo: Emily So



A tour of the permanent collection stored at the Off-Site storage, 2012

Photo: Meredith Seymour

Pro-D Workshop for Teachers

The Museum offers an annual professional development workshop for teachers and other educators. The theme of the 2012 workshop was Japanese immigration and featured a guest speaker, author Seiji Hiroe, who spoke about his inspiration for writing the Steveston-based storybook, *The Cowboy Fisherman*.

Japan Through the Senses Education Kit Update

Through THEN/HIER's (The History Education Network) Small Projects Grant, a contractor was hired to update the *Japan Through the Senses* education kit. Changes were made to incorporate different critical thinking strategies, such as the historical thinking concepts, and weave in local stories about the Japanese Canadian community in Richmond. This kit was well received by teachers at the Pro-D Workshop for Teachers in 2012.

Summer Programs

Nearly 100 children and youth became *Time Travel Detectives* and *Junior Archaeologists* through the Museum's 2012 summer public programs and daycamps, which encouraged children to explore the history of Richmond through engaging activities and adventures. Two summer staff, funded through the Canada Summer Jobs grant program and the Richmond Museum Society, developed and delivered these programs under the direction of Museum staff.

BC Field Trip Fair

Continuing its longstanding partnership with Britannia Shipyard's National Historic Site, London Heritage Farm and the Steveston Museum, the Museum's educational programs were promoted at the annual BC Field Trip Fair at VanDusen Botanical Gardens in Vancouver in October 2012. Staff spoke with nearly 300 teachers about unique field trips and learning resources offered by Richmond's museums and heritage sites.

Richmond District Convention

The Museum participated at the bi-annual Richmond School District Convention in 2013 with a workshop for teachers and a promotional booth. Teachers explored historical thinking strategies through education kits and were encouraged to use Richmond's museums and heritage sites as tools for teaching and learning.



Spring Break Camp 2013—Exhibit review with Museum Director

Photo: Emily Ooi

Children's Arts Festival Workshop: Highway to Heaven

As part of the Children's Arts Festival in February 2013, nearly 200 participants toured the *Highway to Heaven* exhibition and explored individual identity and cultural community through collage artwork.

National Aboriginal Day

Once again partnering with the Richmond School District and Pathways Aboriginal Centre, to celebrate National Aboriginal Day in June 2013, the Museum sponsored a Coast Salish heritage workshop and interactive dance performance by Heiltsuk Dance Group.



National Aboriginal Day 2013—Heiltsuk Dance Group

Photo: Leila Waugh

Public Programming

Japanglish

This semi-autobiographical play, written and performed by Yumi Ogawa, about a Canadian born woman living with immigrant Japanese parents, was presented to a full house audience of 120 by the Richmond Museum, Richmond Arts Centre and Community Social Services in connection with the Museum's 2012 exhibit, *Edo: Arts of Japan's Last Shogun Age*.

Experience Japan Day

This interactive opportunity to tour the Richmond Museum's 2012 *Edo* exhibit with Japanese art historian Maiko Behr, play hands-on Japanese games, and try a hand at origami making, drew 275 guests. The program featured Japanese music and the opportunity to partake in a traditional tea ceremony.



Volunteer Jason Sakaki demonstrates the art of origami

Photo: Peter Harris

Culture Days 2012

For the third year in a row, Richmond Museum joined the national campaign to promote arts, culture and heritage. More than 225 people enjoyed the three free, hands-on, interactive programs that invited the public to explore heritage through the Richmond Museum. *Artifact Storage Tours* provided a rare opportunity to see the Museum's collection of artefacts and its storage facility. *Garden City: Play, Discover, Learn* provided a chance to explore the *Garden City* exhibit through games, crafts and activities. At the *Farm-to-Feast Cookout*, guests were treated to a rooftop garden experience featuring food demonstrations with local chef Ian Lai.



Richmond Museum volunteers show visitors how to churn butter at World Food Day 2012

Photo: Richmond Museum

World Food Day 2012

In conjunction with the *Garden City: Richmond's Agricultural Legacy* exhibit and in celebration of World Food Day, the Richmond Museum, in partnership with the Richmond Food Security Task Force, Richmond Public Library and Richmond Media Lab, hosted a special event with interactive displays and interpretation around the theme of food. Over 200 people enjoyed the festivities, which included a display of heritage seeds and plants hosted by Councillor Harold Steves, a sale of jams and jellies from London Heritage Farm, and an opportunity to sample your own hand-churned butter.



Chef Ian Lai at the Museum's Farm-to-Feast Cookout during Culture Days 2012

Photo: Peter Harris

Seeds of Harmony

In conjunction with the *Highway to Heaven* exhibit, Richmond Museum invited the public to explore the value of faith in building a stronger, healthier community. Fifty people of diverse faiths and cultural backgrounds shared their personal

experiences during World Interfaith Harmony Week in February 2013, designated in 2010 by the United Nations as a means to spread the message of harmony and tolerance among the followers of all the world's religions, faiths, and beliefs.

Seeds of Harmony was created in collaboration with Richmond Intercultural Advisory Committee, Richmond School District, Kwantlen Polytechnic University and Multifaith Action Society.

Internship Program and Volunteers

The Museum continues to support post-secondary students who plan to enter the field of museum, heritage and culture, through UBC's Faculty of Arts Internship Program. The Collections and Museum Assistant interns receive critical, hands-on experience in a museum and in return, they provide a fresh and creative perspective to programs and operations.

PRCS - 80



Museum intern, Elizabeth Cho, assists with the installation of the Spring Break Camp 2012 exhibit on Japanese children

Photo: Emily So

Agricultural Self-Guided Historical Brochure

In conjunction with the exhibit, *Garden City: Richmond's Agricultural Legacy*, the first publication in a series of eight brochures was updated.

In 2013, the Museum expanded its volunteer and internship program by partnering with UBC's Faculty of Education to host two teacher-candidates for a three-week community-based practicum. With their unique set of teaching skills and classroom experience, these students provided critical feedback about the Museum's programs while learning about the value of informal education and learning resources in the community.

2012–2013 Heritage Update

Richmond Museum Society

The Museum Society continues to lobby for a new Richmond Museum. The Executive and Communications Committees were active in meeting with other community organizations, individuals and businesses to gather and distribute information about the need for a new facility. The Membership Committee continues their drive to increase awareness and membership for the Museum.

The Museum Board will be undertaking a strategic planning workshop in the fall of 2013.

Funding

Funding from a variety of sources continues to assist the Museum with its operations and high quality exhibitions and programming.

2012

- BC Arts Council, Annual Operating Assistance: \$23,000. Supports collections management, exhibits, public and educational programming.
- BC Heritage Fair Society: \$1,000. To assist with the Richmond Delta Regional Heritage Fair.
- Canada Summer Jobs Program Grant: \$15,426.25 (70% of wages and benefits). To hire two summer program instructors.
- Canadian Heritage, Building Communities through Arts and Heritage: \$4,900. Grant supports and promotes Doors Open Richmond.
- City of Richmond Community Grant: \$3,500. Helped to fund opening for Doors Open Richmond.

- Doors Open Richmond: \$4,590. Private donations from various donors used for Doors Open Richmond.
- Earned Revenue: \$14,000. From children's, school, public programs and memberships.
- Museums Assistance Program Grant: \$49,130. To inventory, house and enter Steveston Historical Society's 5000+ artefacts into the collections management database.
- Richmond and Delta School Board: \$2,000. To assist with the Richmond Delta Regional Heritage Fair.
- Richmond Delta Regional Heritage Fair Donations: \$2,500. Delta Museum Society, Britannia Shipyards, Gulf of Georgia Cannery Society and the Richmond Heritage Commission contributed to support the Richmond Delta Regional Heritage Fair.
- Young Canada Works Program Grant: \$ 4,507 (60% of wage and benefits). To hire a summer student to assist with artefact cataloguing, exhibit preparation and research.
- Private Donations: Smaller donations were made by various individuals to assist with general operations via the donation box located in the Museum.

2013

- BC Arts Council, Annual Operating Assistance: \$24,000, Supports collections management, exhibits, public and educational programming.
- BC Heritage Fair Society: \$1,000. To assist with the Richmond Delta Regional Heritage Fair.

- Federal Government of Canada: \$750. To assist with the Richmond Delta Regional Heritage Fair and to promote the war of 1812 to students and teachers.
- Richmond and Delta School Board: \$2,000. To assist with the Richmond Delta Regional Heritage Fair.
- Richmond Delta Regional Heritage Fair Financial Sponsorship: \$3,600. Britannia Shipyards NHS, Richmond Heritage Commission, and Delta Museum Society contributed to support the Richmond Delta Regional Heritage Fair.
- Richmond Delta Regional Heritage Fair In-Kind Sponsorship: \$3,713.26. Food, awards, prizes, room rentals, workshops, field trips, tents and school buses were donated by various local organizations.
- BC Creative Communities Grant: \$5,000. Grant supports and promotes Doors Open Richmond.
- Canadian Heritage, Building Communities through Arts and Heritage: \$4,000. Grant supports and promotes Doors Open Richmond.



Garden City: Richmond's Agricultural Legacy, 2012

Photo: Peter Harris

Steveston Interurban Tram Building

Interurban Tram Building Development

Construction of the Steveston Interurban Tram Building began in 2012 at the corner of No. 1 Road and Moncton Street in Steveston. Designed by Birmingham & Wood Architects and built by Scott Special Projects Ltd, this building will house the #1220 Interurban. In addition to providing a home for the Interurban tram, the building includes a community meeting room and restoration space, which will be converted into programming space once restoration is complete. This 2,370 square foot building features 27 foot high windows that allowed the community to watch the restoration process. It also houses a winch system to allow the Interurban tram to be rolled out of the building for special events.

Interurban Tram Conservation and Restoration

To prepare for the restoration of the Interurban tram, curatorial staff continued to build relationships with the City of Vancouver, Burnaby Village Museum and Fraser Valley Heritage Railway Society to share information about the Interurban trams.

In 2012, Richmond Museum curatorial staff participated as an exhibitor at the *Going Electric Open House* at the Burnaby Village Museum. Train and tram enthusiasts learned about Richmond's new tram building and viewed tram related artefacts.



The frame for the building goes up

Photo: Scott Special Projects Ltd.



Work on the roof takes place

Photo: Scott Special Projects Ltd.



“Back on Track in Steveston”, the new public artwork created by Mia Weinberg, at the Steveston Interurban Tram Building

Photo: Michelle Brunet

2012–2013 Heritage Update

Programs and Events

Opening Celebration

The Steveston Interurban Tram Building opened on Friday, May 3 to great fanfare. Approximately 800 people attended the opening and watched Mayor Brodie, Council Members and honoured guests simultaneously cut the ribbon to open the building. Delicious food, heritage interpreters in period costume, taiko drummers and cool jazz music from the 1920s and '30s rounded out the evening's festivities.

Across the intersection, at Rocanini Coffee Roasters, a PechaKucha evening continued the celebrations, with artists, architects and historians presenting up to 20 image slides for 20 seconds each to packed audiences.

Doors Open

The opening of the Steveston Interurban Building kicked off *Doors Open Richmond* for 2013. Approximately 3,300 people visited the Steveston Interurban Tram Building during its opening weekend, exploring the 1220 Interurban, visiting local historian Ron Hyde's book signing booth and creating their own mini tram craft to take home.

1220 Tour

The *1220 Tour* highlights 12 things about the 1220 Interurban in 20 minutes. This tour is offered free to members of the public at 12:20 p.m. every day the Steveston Interurban Tram Building is open.



Victor Sharman, former BCER Interurban Motorman, at the Steveston Interurban Tram Building opening ceremony

Photo: Peter Harris



Ron Hyde with his book "The Sockeye Special" during Doors Open Richmond in May 2013

Photo: Gabrielle Sharp

Steveston Museum and Visitor Centre and Japanese Fishermen’s Benevolent Society Building

Exhibitions and Public Programming

Summer Music Series 2012

Styling the Past, July 7

210 visitors enjoyed the ambience of the Latin music styling of *Sangre Morena* and the flamenco guitar of Ivan Dimitrov and his students in the Town Square park surrounding Steveston Museum. Children decorated 1920’s-style flapper head bands and sailor hats and visitors had their hair and makeup professionally done in styles from the past. From pin curls to beehives for the ladies, and from slicked-back dos to pompadours for the gents, history was lived from the top down for visitors during the day.

Washing the Past, August 4

Following the success of *Styling the Past*, *Washing the Past* featured traditional washboard music from the *Little Rascals* and guitar music from Ivan Dimitrov. 440 people enjoyed the music while celebrating the domestic ritual of washing using old fashioned tubs, washboards and hand-operated ringers, overseen by costumed volunteers. Adults and children alike finished the day by making a clothespin doll to take home.



Washing the Past at Steveston Museum & Visitor Centre. Costumed volunteers demonstrate traditional washing techniques to a young visitor.

Photo: Maria J. Cruz

Doors Open Richmond 2012

In 2012, Steveston Museum offered free walking tours of Steveston Village three times each day to members of the public visiting the museum during the *Doors Open* weekend. 389 visitors explored the museum site during the event.

Doors Open Richmond 2013

For *Doors Open Richmond* 2013, Steveston Museum offered free heritage walking tours of Steveston five times each day. 400 visitors explored the site and 41 went on the walking tour.

Salmon Festival 2012

Museum staff and volunteers offered visitors the chance to create Japanese style fish prints called *gyokaku* in Town Square park after the Salmon Festival parade made its way down Moncton Street. This free event proved popular, with 152 visitors to the park creating over 100 prints.

Murder, Mayhem and Morality in Old Steveston

Over summer, a new walking tour exploring the darker side of Steveston’s history was offered together with the general history walking tour *Treading Through Time*. *Murder, Mayhem and Morality* was a particular hit with visitors, with 109 people exploring the seedy underbelly of Steveston’s past between July and September 2012.

2012–2013 Heritage Update

Colouring Contest

Steveston Museum, in partnership with local retailers Splash Toys and Candy Dish, held three colouring contests in the first half of 2013. These contests offered children a fun opportunity to access heritage themes, and were held on special events throughout the year. The museum received 115 entries for the contests held from February to April.



Vibrant entries for one of Steveston Museum's colouring contests held in 2013

Photo: Gabrielle Sharp

Exhibits

The Steveston Museum presented three temporary displays in the first half of 2013, commemorating teddy bears, exploring the link between the CPR Railway and the Steveston Interurban and celebrating the Steveston fishing industry.



"Salmon"—a temporary exhibit at Steveston Museum celebrating Steveston's fishing history, June 2013

Photo: Gabrielle Sharp



"Teddy Bears"—a temporary exhibit for the young and young at heart which concluded in January 2013

Photo: Gabrielle Sharp

Educational Programming

The Steveston Museum offers three educational programs: *Sliding Through Steveston—An In-Class Heritage Presentation*, *Treading Through Time*—a walking tour of Steveston, and *Urban Packers*, an interactive education kit in the form of five themed backpacks that are unpacked during a walk through Steveston. The Museum delivered seven education programs in 2012 and four programs in the first half of 2013.

Collections Management

In 2012, the Richmond Museum Society was awarded \$49,130 through the Federal Government's Museum Assistance Program. The grant provided funding to complete the Steveston Museum Collection inventory and install mobile compact shelving at the City of Richmond's Shell Road Storage Warehouse for the collection. The project was completed in 2013, and the collection is now housed in museum quality materials that will preserve and protect Steveston's material culture.

Site Development

A Building Committee, consisting of members of the Steveston Historical Society and City Councillors, was established in 2012. Their mandate is to guide the heritage rehabilitation of the Japanese Fishermen's Benevolent Society Building.

Steveston Historical Society (SHS)

The Operating Agreement with the City of Richmond was updated and signed in early 2012. SHS also entered into an agreement with Tourism Richmond for the operation of a Visitor Centre to be incorporated in the Steveston Museum building. The Society continues to work with the City to facilitate the rehabilitation of the Japanese Fishermen's Benevolent Society Building.



PRCS - 86

Sliding Through Steveston In-Class Heritage Presentation at Mitchell Elementary in 2012

Photo: Gabrielle Sharp



Eastern side of the Japanese Fishermen's Benevolent Society Building at the Steveston Museum site

Photo: Michael Chan

City of Richmond Archives—City Clerk’s Office

The City of Richmond Archives is the official repository for the records of the City of Richmond’s municipal government. The Archives also acquires records through donations from individuals, families, organizations, and private companies.

Users of the Archives

There were 2,879 reference requests and visitors to the Archives in 2012. Approximately 23% of research requests originated from City staff. The remainder represented a wide variety of research interests and needs, including local businesses, community groups, environmental and property researchers, public artists, writers, university and high school students and family historians.

From January through June of 2013, the Archives had 1,519 research requests and visitors, including a 10% increase year over year of requests from City staff.

Holdings of the Archives

The Archives’ holdings include approximately one (1) kilometre of textual records, 140,000 historical photographs, 18,000 maps and plans and over 500 sound and moving image recordings. In addition to transfers of records from various City departments, the Archives acquired new donations of records in 2012 from 41 different individuals and companies and nine community organizations.

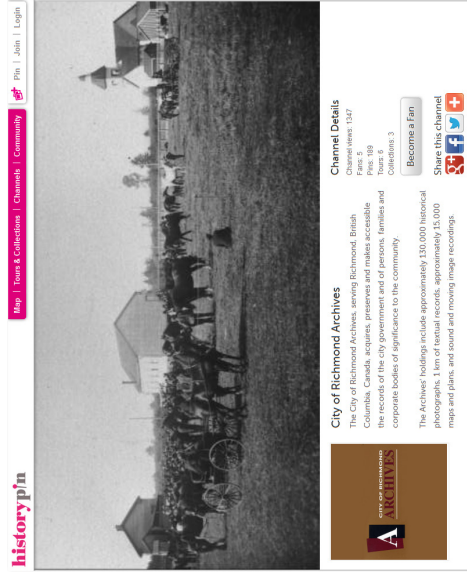
In the first half of 2013, 19 new donations of records were received from the community.

Special Projects and Programs

- Ted Clark Interurban film and photograph digitization project (ongoing).
- Development of the City of Richmond Archives channel on “HistoryPin.com”.
- Major Exhibits: *A Day at the Races and The Thompson Family Records*.
- New and updated finding aids and publications on the Archives web site.
- Educational programs—19 different groups (2012); ten different groups (Jan–June 2013).
- Volunteer program with over 1,880 hours of service provided in 2012.
- Establishment of a Richmond Archives Channel on YouTube.

The Friends of the Richmond Archives

The Friends of the Richmond Archives is a non-profit society established to promote and support the activities of the City of Richmond Archives. The society has approximately 260 active members. In 2012, the Friends took part in a number of events and activities, providing funding and volunteers for projects and programs at the Archives, organizing the annual Archives Tea, carrying out the Community Exhibit program, and participating at various community events, including the Earth Day Summit at Steveston-London High School, the Steveston Salmon Festival, London Farm Family Farm Days, and the Remembrance Day event at the Richmond Public Library. The Friends group also entered the world of social media in 2012 and now maintains an informative and interactive Facebook page.



Front page of *City of Richmond Archives Channel on HistoryPin.com*.



Parade to the Post, Brighouse Park Race-track, ca. 1923.

Photo: City of Richmond Archives Photograph #2001 9 30

Richmond Heritage Commission—Policy Planning Division

Richmond Heritage Commission 2013 Annual Report and 2014 Work Plan

With the appointment of a new Chairperson in November 2012 and four new members in 2013, the Commission successfully reached its nine-membership allotment in May of this year. In addition to successfully completing all the objectives set out in the 2013 work plan the Commission also turned their focus to membership education. A segment of each Commission meeting was dedicated to reviewing relevant policy including, the Heritage Act, Richmond Bylaws, the Steveston Conservation Strategy along with General Development Permit Guidelines for Steveston Village. In May, three members attended a one-day *Heritage 101 Workshop* sponsored by Vancouver Heritage Foundation. They hope to bring the knowledge and skills acquired from this program to their practice of heritage conservation in Richmond.



McKinney House

Photo: City of Richmond

Report on 2013 Work Program

The Commission supported the *Richmond Delta Heritage Fair* with a \$2,000 donation. Several members attended the event which proved to be an overwhelming success with a record 600 students taking part.

Doors Open 2013 was supported with a \$1,000 contribution as part of the Commission's ongoing outreach and community awareness activities.

Development Applications

As part of the Commission's ongoing review and comment on development applications, the Commission provided feedback on five permit applications in the Steveston Heritage Conservation Area and one permit to demolish a residential building listed on the heritage inventory.

Mouth of the Fraser Newsletter

As part of the Commission's work in supporting heritage education and public awareness, regular written contributions were made during the year to the *Mouth of the Fraser* newsletter.

2014 Work Program Plan

Continue participating in the following items as per 2012 plan:

- *Richmond Delta Heritage Fair*—continued support.
- *Doors Open 2014*—continued support and contribution.
- Assist in implementing the Steveston Heritage Conservation Area as per 2012 objective
- Continue with ongoing quarterly contributions to the *Mouth of the Fraser* newsletter.
- City Wide Heritage Strategy—provide support where needed in the development of terms of reference and feedback.

New projects for 2014

- Establish an inventory of existing utility kiosks in the Steveston Village area and identify those kiosks that could be wrapped with archival pictures as part of a public art and community awareness program.
- Look for ways of promoting the work of the Commission by participating in public forums where possible.
- Review the process by which the Commission provides feedback to staff, committees and Council.

Prepared by: Kathleen Beaumont, Chair, Richmond Heritage Commission

Planning and Policy

The Heritage Commission provides comment and advice on key City initiatives such as the Steveston Interurban Tram Building, the Japanese Fishermen's Benevolent Society building, and other ongoing heritage conservation efforts. Staff presentations enable a working familiarity with the planning and implementation of these projects. The Commission was provided with an update from City staff on the Dike Master Plan and implications for heritage resources, particularly in Steveston Village.

Programs and Promotion

The Heritage Commission provides support to the Richmond Museum Society for annual programming such as the *Heritage Fair and Doors Open Richmond*. This partnership has enabled more extensive outreach to the young people and parents of the Fair's participants and has extended the mandate to a broader audience.

The Commission has also supported the on-going Richmond Oral History Project in partnership with the Richmond Museum.

Newsletter

The Heritage Commission maintains an ongoing liaison with the Richmond Museum to sponsor the *Mouth of the Fraser*, a newsletter published three times per year. The newsletter provides thematic coverage of current heritage issues and programming updates for the various museums and historic sites.

Design Review

The Heritage Commission provides comment and advice on development proposals and design of renovations or new construction to ensure that Council's heritage policies receive consideration during rezoning and development permit applications.

Heritage Awards

The Commission's Annual Heritage Awards to recognize exceptional achievement and leadership in heritage from members of the community are now presented in conjunction with the *Heritage Fair*. Three awards were presented in 2012: To Graham Turnbull for promoting local heritage / awareness of Richmond's heritage; to Jack and Joseph Lubzinski for promoting heritage and their donation of significant cultural / archival documents and materials; and to Claudia Chan for her book: *A Thematic Guide to the Early Records of Chinese Canadians in Richmond*.

Three awards were presented in 2013: To Bill London for his family's on-going contribution to heritage conservation at the London Heritage Farm; to Ron Hyde for his book *The Sockeye Special*; and to the Nikkei Fisherman's Committee for their work in preserving the history and heritage of the Nikkei fishermen and their contribution to Richmond's growth and fishing-based economy.



Steveston Museum

Photo: City of Richmond



Steveston Village Streetscape

Photo: City of Richmond

Heritage in Parks

River Green Village Parks and Open Space Plan

River Green Village (RGV) sits immediately to the west of the Dinsmore Bridge, and occupies part of the former Brighthouse homestead that was established in 1870. RGV's approved Parks and Open Space Plan includes features that acknowledge and reveal the site's notable history. The Gilbert Greenway preserves a few of the large trees that remain from the homestead era as well as one of the site's original drainage ditches. Within the Greenway is the Brighthouse Trail, a public pathway that passes beside the heritage ditches, parallels the historic ditch, and connects to the dike that remains in the location of the original Middle Arm dike. The Brighthouse Trail is marked either end with public art that reveal the site's prominence in the development of the city of Richmond.

Railway Avenue Corridor Greenway

The Railway Avenue Corridor Greenway is a significant addition to the Richmond trails network. A public consultation process began in July 2012, concluding with a large Open House in October. There was overwhelming public support and excitement for the 3.7 kilometre greenway that will create a north-south connection between the Middle Arm and South Dyke / Steveston waterfronts. The vision of an enhanced greenway along the Railway Corridor was compelling; people were genuinely interested and saw themselves actively using it.

Phase 1 is close to completion and has focused on 'making the connection'. This phase has included the construction of the main trail from Granville Avenue to Garry Street; upgrades to existing McCallan Road trail; the addition of functional trail elements for safety and ease of use; landscaping around Branscombe House; and the development of a unique character and an identifiable "brand" for the Railway Avenue Corridor Greenway.

Terra Nova Rural Park

In 2012, the City won a prestigious award for Terra Nova Rural Park from the World Leisure Organization. Richmond was honoured to be recognized alongside other local governments and organizations from all over the globe who have found innovative and extraordinary ways to engage their communities in healthy and meaningful leisure activities.

Terra Nova Rural Park provides many opportunities for the public to enjoy the park through organized events such as gardening, cooking, and nature programs and festivals or through quiet passive delight in the scenery. The mound adjacent to the West Dyke was raised in 2012 and now provides incredible 360 degree views over Sturgeon Banks and the park. Construction has begun on the Terra Nova Play Environment, an innovative play environment within a former homestead and paddock area. Custom designed play elements will include a tandem zip-line, an iconic tree house, various climbing structures, swings, spinning structures, and a planted maze. The play environment is expected to be completed by Summer 2014.

Work on three buildings in the historic cannery area is underway. The restoration of the Cannery Store is complete. The City will begin looking for a tenant to operate a small coffee shop/cafe in 2014, potentially using produce grown in Terra Nova. Reconstruction of the Cannery House will begin in Fall 2013 with a caretaker expected to reside in the building in 2014. Work will also commence in the Fall 2013 on restoring the Edwardian Cottage with the expectation that a tenant will be using the facility in September 2014.

Terra Nova Rural Park as a cultural landscape continues to evolve, providing the public with a unique rural experience in an urban environment.



New benches in Terra Nova with laser cut-outs of words that relate to the landscape. These are little clues in the landscape to former uses, hopefully making people curious to know more. This bench looks over a former potato field. Photo: Yvonne Stich

Public Art

Lulu Suite: 17 Films for 17 Islands

Lulu Suite: 17 Films for 17 Islands is a video wall installation by artists Deanne Achong and Faith Moosang, installed at the Richmond Olympic Oval in 2013, that has been created by reworking 20th century archival films and footage that pertain to Richmond. Achong and Moosang exploit the ephemeral quality of analogue film and audio to draw parallels to the transitory and imprecise nature of memory and history. In the transfer from celluloid to data, film grain to pixel, reel-to-reel to mp3, the original films are dragged into the 21st century. The artists then alter the films, opening up the visual, auditory and narrative space for a new telling of the old stories. The title, *Lulu Suite*, is both a pun on the name of the actress, Lulu Sweet, after whom Lulu Island is ostensibly named, and a nod to the compositional approach of the artwork.



Lulu Suite: 17 Films for 17 Islands, by artists Deanne Achong and Faith Moosang, 2013

Photo: Eric Fiss

Gulf of Georgia Cannery National Historic Site

Owned by Parks Canada and operated by the Gulf of Georgia Cannery Society, this site is an important attraction in Richmond that provides a rich interpretation of local, provincial and national history.

Exhibits and Public Programming

Temporary Exhibit—Seafood for Thought

In May 2012, the *Seafood for Thought* exhibit opened with the goal of encouraging visitors to learn more about ocean-friendly seafood choices that benefit our waterways. The exhibit makes use of art, film, video, and multimedia elements and was developed with the expertise and support of the David Suzuki Foundation and the Vancouver Aquarium.



Creating fish prints as part of Culture Days

Photo: Gulf of Georgia Cannery Society

Best Catch Sustainable Seafood Festival

In September 2012, over 1,000 people attended the first annual *Best Catch Sustainable Seafood Festival*. The event featured cooking demonstrations, food tastings, live music, exhibitors and carnival games for children. Visitors were encouraged to explore the temporary exhibit *Seafood for Thought* inside the Cannery as well as the Cannery's permanent exhibits.

Outside the Cannery there was plenty of activity with local chefs demonstrating various techniques for preparing and preserving seafood. At what proved to be one of the most popular demonstrations of the day, a representative from the Pacific Urchin Harvesters' Association demonstrated how to prepare uni and offered samples—a rare treat for many who have never tried this unique delicacy before.

Culture Days 2012

The Cannery is the size of three hockey rinks combined, and the general public only has access to about half of it on a regular basis. In celebration of *Culture Days* 2012, staff developed a unique tour that gave visitors a closer look at the other half that they don't generally get to see.

Visitors who participated in the *Under the Rafters* tour were able to have a closer look at the Cannery's unique wall graffiti, gain access to the Ice House and learn about the strange and incredible artefacts that make up the Cannery's collections.

Members of the environmental programs team from the City of Richmond joined Cannery staff and volunteers for "*Fin"ger Prints of the Fraser River: Art and Ecology Intertwined*". This program used the traditional Japanese printmaking technique of *gyotaku* to educate visitors about the ecology of the indigenous fish species of the Fraser River. Participants were able to create and take home beautiful one-of-a-kind fish prints made with real fish from the Fraser River.



Chef Ian Lai grills up sardines at the Best Catch Sustainable Seafood Festival.

Photo: Gulf of Georgia Cannery Society

Statistics

Attendance

Signature Events

Doors Open Richmond 2012

- 18,000 site visits

Doors Open Richmond 2013

- 25,148 site visits

Maritime Festival 2012

- 35,000 visitors

Facilities

Britannia Shipyards National Historic Site

- 85,600 visitors (2012)
- 23,800 visitors (January–June 2013)

London Heritage Farm

- 5,864 visitors (2012 special events)
- 15,990 visitors (January–June 2013)¹

Richmond Museum

- 42,441 visitors (2012)
- 25,165 visitors (January–June 2013)

Steveston Interurban Building

- 14,300 visitors (May–June 2013)

Steveston Museum

- 1,300 visitors (2012 special events)
- 16,700 visitors (January–June 2013)²

¹ Counter installed in July 2012

² Counter installed in October 2012

Volunteers

Signature Events

Doors Open Richmond 2012

- 200 volunteers contributed 1,300 volunteer hours

Doors Open Richmond 2013

- 287 volunteers contributed 1,855 volunteer hours

Maritime Festival 2012

- 97 volunteers contributed 1,129 volunteer hours

Facilities

Britannia Shipyards National Historic Site

- 250 volunteers contributed 3,500 volunteer hours (2012)
- 150 volunteers contributed 1,000 volunteer hours (January–June 2013)

London Heritage Farm

- 9,000 volunteer hours (2012)
- 4,000 volunteer hours (January–June 2013)

Richmond Museum

- 205 volunteers contributed 2,572 volunteer hours (2012)
- 142 volunteers contributed 1,543 volunteer hours (January–June 2013)

Steveston Interurban Tram Building

- 15 volunteers contributed 105 volunteer hours (May 3–June 30, 2013)

Steveston Museum

- 7 volunteers reported 50 volunteer hours for special events (2012)
- 4 volunteers contributed 18 volunteer hours for special events (January–June 2013)

Weddings/Special Occasion Rentals

Britannia Shipyards National Historic Site

- 62 wedding and special event rentals (2012)
- 53 wedding and special event rentals (January–June 2013)

London Heritage Farm

- 38 weddings, picnics and celebrations (2012)
- 23 weddings, picnics and celebrations (January–June 2013)

Minoru Chapel

- 130 weddings, memorials and baptisms (2012)
- 39 weddings, memorials and baptisms (January–June 2013)



City of Richmond

6911 No. 3 Road, Richmond, BC V6Y 2C1

Telephone: 604-276-4000

www.richmond.ca