



CITY OF RICHMOND

REPORT TO COMMITTEE

TO: Planning Committee
FROM: Alan Clark
Manager, Zoning

DATE: December 8, 2000
FILE: 0107-10-01

RE: **Application for a Class "B" Liquor Licence with audience participation (Karaoke and Dancing) at Unit 200 - 8171 Westminster Highway.**

STAFF RECOMMENDATION

That the application by Xing-Xing Café and Karaoke Ltd. to the Liquor Control and Licencing Branch for a Class "B" Liquor Licence with audience participation (Karaoke and Dancing) be supported, and that the Liquor Control and Licencing Branch be advised:

- (i) of this recommendation; and
- (ii) that the R.C.M.P. does not object.

Ac
 Alan Clark
 Manager, Zoning

Att. 2

FOR ORIGINATING DIVISION USE ONLY		
ROUTED TO:	CONCURRENCE	CONCURRENCE OF GENERAL MANAGER
R.C.M.P.....	Y <input checked="" type="checkbox"/> N <input type="checkbox"/>	<i>David M. Kelly</i>
Law.....	Y <input checked="" type="checkbox"/> N <input type="checkbox"/>	

STAFF REPORT

ORIGIN

Xing-Xing Café and Karaoke Ltd. are asking for a resolution of Council supporting their application to the Liquor Control and Licencing Branch for a Class "B" Liquor Licence with audience participation (Karaoke and Dancing) at Unit 200 – 8171 Westminster Highway, Richmond, BC.

ANALYSIS

Ms. Liesa Lang intends to operate a Restaurant with audience participation (Karaoke and Dancing) in their premises at Unit 200 – 8171 Westminster Highway, Richmond, BC.

The property is zoned Downtown Commercial District (C7), which permits the proposed uses, and staff can offer no reason why the request cannot be granted.
The Liquor Control and Licencing Branch is requiring, as a condition precedent to the granting of the licence, that the applicant obtain a resolution of support from City Council.

FINANCIAL IMPACT

Nil.

CONCLUSION

Since the Zoning District (C7), governing property at Unit 200 – 8171 Westminster Highway permits the proposed uses, the application for a Class "B" Liquor Licence with audience participation (Karaoke and Dancing) can be supported.


Alan Clark
Manager, Zoning

AJC:ajc

Xing-Xing Cafe and Karaoke Ltd.

Administration Office

970 - 1055 West Hastings Street, Vancouver, B.C. V6E 2E9

T. 604.873.8622 F. 604.873.8655

28 November 2000

City of Richmond
6911 No. 3 Road
Richmond B.C. V6Y 2C1

4-4-6.

Attention: Mr. Alan Clarke
Manager, Permits and Licenses

CF.

Dear Sirs:

Re: Liquor License Application
Subject Premises: 200 - 8171 Westminster Highway, Richmond BC
Building Permit No.: 173350 (Issued to Landlord - Shun Cheong Holdings Ltd.)

Pursuant to the requirements of the liquor license application, we are seeking the written approval of Richmond city council for the opening of an exclusive restaurant which will also be equipped with karaoke equipment.

The restaurant will be a full service restaurant with a full menu for lunch and dinner, and a lighter menu for mid-afternoon and post-dinner. The food will be predominately western.

In developing the concept for our restaurant we have chosen to differentiate our operation from the existing establishments by making a substantial investment in the design and decor of our premises. We are not a restaurant that just happens to have karaoke equipment, nor are we a "karaoke box" that offers minimal decor in a somewhat claustrophobic room.

We selected BBA Design Consultants Inc. to create a space that will set us apart and above any of our "competitors". This design team has extensive experience in the hospitality industry. Some of their previous projects are:

- The Wickaninnish Inn and Ancient Cedars Spa, Tofino BC
- The Westin Grand Vancouver
- Canadian Airlines - Empress Lounge; International and Transborder
- Intrawest Resort Ownership Corporation - design of destination resort facilities

The restaurant seating is of two types: public and private.

- Our interior designers have demised five private rooms which will provide both food and karaoke service. All the rooms have both exterior and interior glazing. The interior finishing of each private room is unique to its particular theme such as the "Paris Cafe". In the "Paris Cafe" room we will be employing customized finishes to create the ambiance of an outdoor cafe. We have taken great care in selecting flooring, fabric, drapery, lighting, painting, faux painting, and ceiling finishes to create an experience that will

transcend and redefine any other restaurant establishment in Richmond.

- In our main dining area we have created a room which we hope will provide a fun dining experience. The colors and finishes are contemporary and sophisticated to appeal to a more discerning customer. This room will be very dramatic with its floor to ceiling drapes and padded fabric panels. A small stage is installed against the wall and customers who wish to sing can do so from their seats or, if they are not self-conscious, they can venture up onto the stage. The room will have the feel of a recording studio which we hope to accomplish with the installation of lighting effects and ceiling mounted cameras. We anticipate that karaoke will not be offered until after the dinner period, and depending on demand may offer karaoke in the mid-afternoon.

We have also taken great care to make the acoustics of the rooms and main area as good as possible.

Please call me if you have any questions. I have enclosed a copy of the layout for your reference.

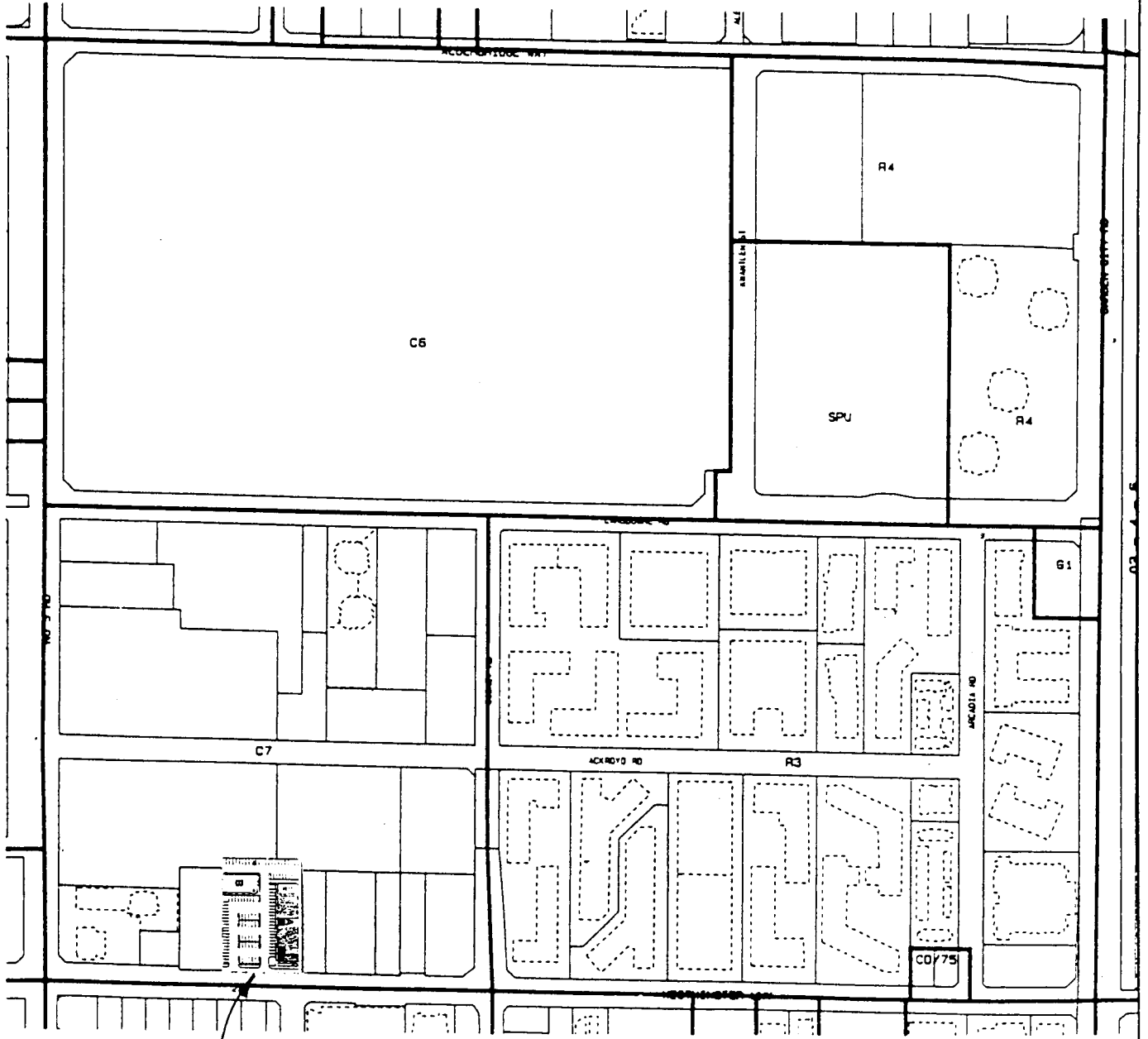
Yours truly,



Liesa Lang

LL/II
Enclosure

33 - 5 - 6



09 - 4 - 6

8171 WESTMINSTER HWY.

0101
 0102
 0103
 0104
 0105
 0106
 0107
 0108
 0109
 0110
 0111
 0112
 0113
 0114
 0115
 0116
 0117
 0118
 0119
 0120
 0121
 0122
 0123
 0124
 0125
 0126
 0127
 0128
 0129
 0130
 0131
 0132
 0133
 0134
 0135
 0136
 0137
 0138
 0139
 0140
 0141
 0142
 0143
 0144
 0145
 0146
 0147
 0148
 0149
 0150
 0151
 0152
 0153
 0154
 0155
 0156
 0157
 0158
 0159
 0160
 0161
 0162
 0163
 0164
 0165
 0166
 0167
 0168
 0169
 0170
 0171
 0172
 0173
 0174
 0175
 0176
 0177
 0178
 0179
 0180
 0181
 0182
 0183
 0184
 0185
 0186
 0187
 0188
 0189
 0190
 0191
 0192
 0193
 0194
 0195
 0196
 0197
 0198
 0199
 0200

Controlled by Planning
County of San Diego 2014



ZONING SEC. 04, 4 - 6

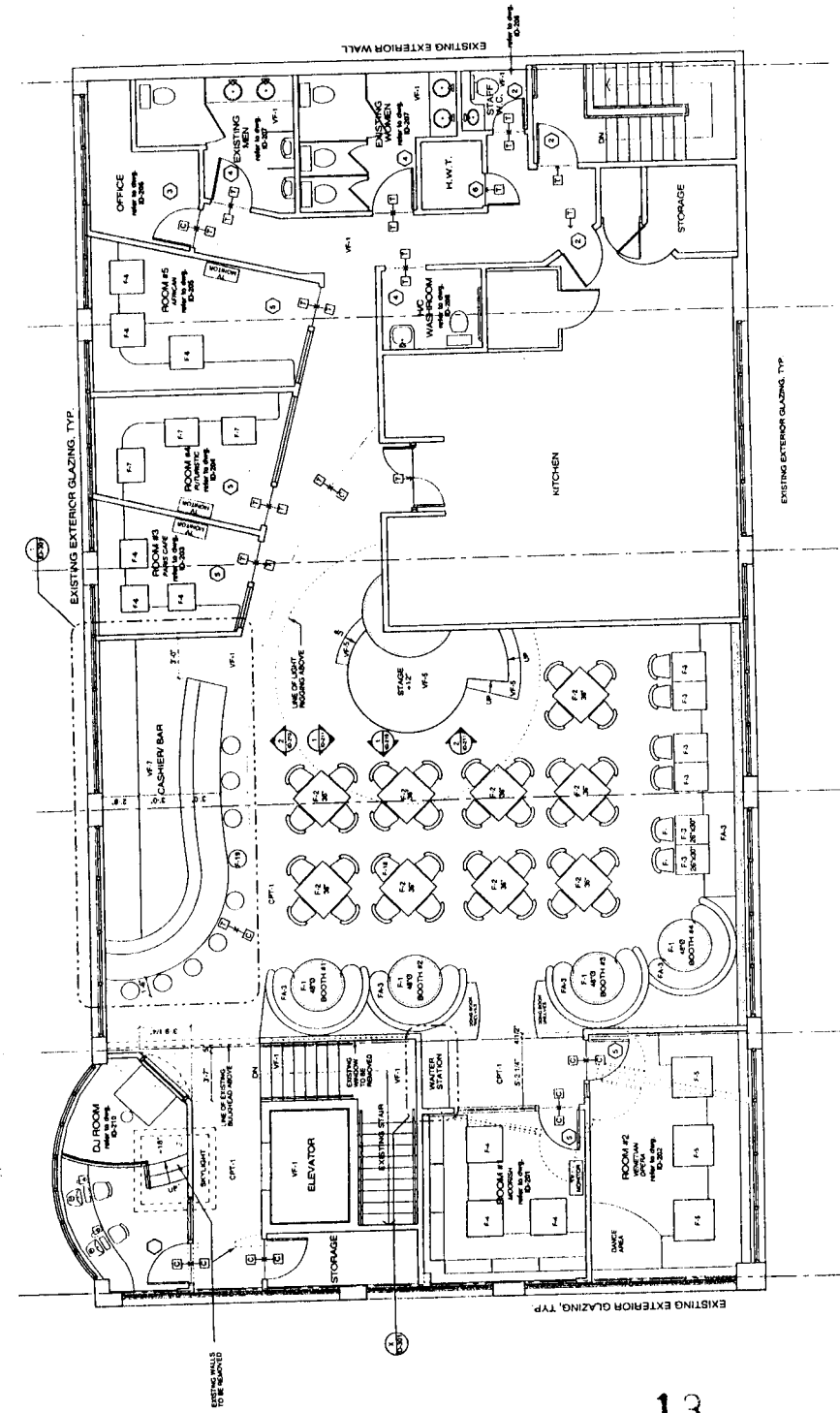
SCALE
 525: 2
 DATE
 03 09 98
 APPROVAL

<p>1. ALL WORK SHALL BE IN ACCORDANCE WITH THE LATEST EDITIONS OF THE INTERNATIONAL CODE BOOKS AND ALL APPLICABLE LOCAL, STATE AND FEDERAL CODES.</p>		
NO.	REV.	DATE
1	ISSUED FOR PERMITS	OCT. 27/00
2	REVISIONS	AS NOTED
3	REVISIONS	AS NOTED
4	REVISIONS	AS NOTED
5	REVISIONS	AS NOTED
6	REVISIONS	AS NOTED
7	REVISIONS	AS NOTED
8	REVISIONS	AS NOTED
9	REVISIONS	AS NOTED
10	REVISIONS	AS NOTED
11	REVISIONS	AS NOTED
12	REVISIONS	AS NOTED
13	REVISIONS	AS NOTED
14	REVISIONS	AS NOTED
15	REVISIONS	AS NOTED
16	REVISIONS	AS NOTED
17	REVISIONS	AS NOTED
18	REVISIONS	AS NOTED
19	REVISIONS	AS NOTED
20	REVISIONS	AS NOTED

PROJECT: XING XING KARAOKE BAR
 6111 WESTMINSTER WAY
 WESTMINSTER, CO
 TEL: (303) 440-1400 FAX: (303) 440-1404

PROJECT NO: 2001
TITLE: CONSTRUCTION PLAN

DATE: MAR. 08, 2002
 SCALE: AS NOTED
 DRAWN BY: [Signature]
 CHECKED BY: [Signature]
 DRAWING NO: ID-101



- 1. EXISTING GLASS DOOR TO REMAIN, 2.307*
- 2. EXISTING INTERIOR DOOR TO REMAIN
- 3. NEW SOLID CORE INTERIOR DOOR 3072
- 4. NEW SOLID CORE INTERIOR DOOR 3072
- 5. NEW SOLID CORE INTERIOR DOOR 3072
- 6. NEW SOLID CORE INTERIOR DOOR 3072
- 7. NEW SOLID CORE INTERIOR DOOR 3072
- 8. NEW SOLID CORE INTERIOR DOOR 3072
- 9. NEW SOLID CORE INTERIOR DOOR 3072
- 10. NEW SOLID CORE INTERIOR DOOR 3072
- 11. NEW SOLID CORE INTERIOR DOOR 3072
- 12. NEW SOLID CORE INTERIOR DOOR 3072
- 13. NEW SOLID CORE INTERIOR DOOR 3072
- 14. NEW SOLID CORE INTERIOR DOOR 3072
- 15. NEW SOLID CORE INTERIOR DOOR 3072
- 16. NEW SOLID CORE INTERIOR DOOR 3072
- 17. NEW SOLID CORE INTERIOR DOOR 3072
- 18. NEW SOLID CORE INTERIOR DOOR 3072
- 19. NEW SOLID CORE INTERIOR DOOR 3072
- 20. NEW SOLID CORE INTERIOR DOOR 3072
- 21. NEW SOLID CORE INTERIOR DOOR 3072
- 22. NEW SOLID CORE INTERIOR DOOR 3072
- 23. NEW SOLID CORE INTERIOR DOOR 3072
- 24. NEW SOLID CORE INTERIOR DOOR 3072
- 25. NEW SOLID CORE INTERIOR DOOR 3072
- 26. NEW SOLID CORE INTERIOR DOOR 3072
- 27. NEW SOLID CORE INTERIOR DOOR 3072
- 28. NEW SOLID CORE INTERIOR DOOR 3072
- 29. NEW SOLID CORE INTERIOR DOOR 3072
- 30. NEW SOLID CORE INTERIOR DOOR 3072
- 31. NEW SOLID CORE INTERIOR DOOR 3072
- 32. NEW SOLID CORE INTERIOR DOOR 3072
- 33. NEW SOLID CORE INTERIOR DOOR 3072
- 34. NEW SOLID CORE INTERIOR DOOR 3072
- 35. NEW SOLID CORE INTERIOR DOOR 3072
- 36. NEW SOLID CORE INTERIOR DOOR 3072
- 37. NEW SOLID CORE INTERIOR DOOR 3072
- 38. NEW SOLID CORE INTERIOR DOOR 3072
- 39. NEW SOLID CORE INTERIOR DOOR 3072
- 40. NEW SOLID CORE INTERIOR DOOR 3072
- 41. NEW SOLID CORE INTERIOR DOOR 3072
- 42. NEW SOLID CORE INTERIOR DOOR 3072
- 43. NEW SOLID CORE INTERIOR DOOR 3072
- 44. NEW SOLID CORE INTERIOR DOOR 3072
- 45. NEW SOLID CORE INTERIOR DOOR 3072
- 46. NEW SOLID CORE INTERIOR DOOR 3072
- 47. NEW SOLID CORE INTERIOR DOOR 3072
- 48. NEW SOLID CORE INTERIOR DOOR 3072
- 49. NEW SOLID CORE INTERIOR DOOR 3072
- 50. NEW SOLID CORE INTERIOR DOOR 3072
- 51. NEW SOLID CORE INTERIOR DOOR 3072
- 52. NEW SOLID CORE INTERIOR DOOR 3072
- 53. NEW SOLID CORE INTERIOR DOOR 3072
- 54. NEW SOLID CORE INTERIOR DOOR 3072
- 55. NEW SOLID CORE INTERIOR DOOR 3072
- 56. NEW SOLID CORE INTERIOR DOOR 3072
- 57. NEW SOLID CORE INTERIOR DOOR 3072
- 58. NEW SOLID CORE INTERIOR DOOR 3072
- 59. NEW SOLID CORE INTERIOR DOOR 3072
- 60. NEW SOLID CORE INTERIOR DOOR 3072
- 61. NEW SOLID CORE INTERIOR DOOR 3072
- 62. NEW SOLID CORE INTERIOR DOOR 3072
- 63. NEW SOLID CORE INTERIOR DOOR 3072
- 64. NEW SOLID CORE INTERIOR DOOR 3072
- 65. NEW SOLID CORE INTERIOR DOOR 3072
- 66. NEW SOLID CORE INTERIOR DOOR 3072
- 67. NEW SOLID CORE INTERIOR DOOR 3072
- 68. NEW SOLID CORE INTERIOR DOOR 3072
- 69. NEW SOLID CORE INTERIOR DOOR 3072
- 70. NEW SOLID CORE INTERIOR DOOR 3072
- 71. NEW SOLID CORE INTERIOR DOOR 3072
- 72. NEW SOLID CORE INTERIOR DOOR 3072
- 73. NEW SOLID CORE INTERIOR DOOR 3072
- 74. NEW SOLID CORE INTERIOR DOOR 3072
- 75. NEW SOLID CORE INTERIOR DOOR 3072
- 76. NEW SOLID CORE INTERIOR DOOR 3072
- 77. NEW SOLID CORE INTERIOR DOOR 3072
- 78. NEW SOLID CORE INTERIOR DOOR 3072
- 79. NEW SOLID CORE INTERIOR DOOR 3072
- 80. NEW SOLID CORE INTERIOR DOOR 3072
- 81. NEW SOLID CORE INTERIOR DOOR 3072
- 82. NEW SOLID CORE INTERIOR DOOR 3072
- 83. NEW SOLID CORE INTERIOR DOOR 3072
- 84. NEW SOLID CORE INTERIOR DOOR 3072
- 85. NEW SOLID CORE INTERIOR DOOR 3072
- 86. NEW SOLID CORE INTERIOR DOOR 3072
- 87. NEW SOLID CORE INTERIOR DOOR 3072
- 88. NEW SOLID CORE INTERIOR DOOR 3072
- 89. NEW SOLID CORE INTERIOR DOOR 3072
- 90. NEW SOLID CORE INTERIOR DOOR 3072
- 91. NEW SOLID CORE INTERIOR DOOR 3072
- 92. NEW SOLID CORE INTERIOR DOOR 3072
- 93. NEW SOLID CORE INTERIOR DOOR 3072
- 94. NEW SOLID CORE INTERIOR DOOR 3072
- 95. NEW SOLID CORE INTERIOR DOOR 3072
- 96. NEW SOLID CORE INTERIOR DOOR 3072
- 97. NEW SOLID CORE INTERIOR DOOR 3072
- 98. NEW SOLID CORE INTERIOR DOOR 3072
- 99. NEW SOLID CORE INTERIOR DOOR 3072
- 100. NEW SOLID CORE INTERIOR DOOR 3072

