



CITY OF RICHMOND
URBAN DEVELOPMENT DIVISION

MEMORANDUM

TO: Councillor Lyn Greenhill
Chair, Public Works & Transportation Committee

DATE: November 9, 2000

FROM: Gordon Chan, P. Eng.
Manager, Transportation

FILE: 6455-01

RE: **Steveston Area Parking and Traffic Issues – Follow-up to Issues Raised at November 8, 2000 Public Works & Transportation Committee Meeting**

At the November 8, 2000 meeting of the Public Works and Transportation Committee, staff were directed to investigate and report back on the following issues regarding Steveston area parking and traffic flows:

- fill-in of currently unused driveways on Bayview Street and Second Avenue to provide additional on-street parking;
- possible relocation of on-street parking on Bayview Street from the south side to the north side; and
- installation of additional signage to direct oversize vehicles to the Chatham Street parking lot.

1. Unused Driveway in the Vicinity of 12240 Second Avenue

The existing unused driveway fronts a two-level retail complex on the east side of Second Avenue (see attached photograph). Vehicle access to the businesses for deliveries and loading is available from a rear lane. Closure of the driveway will provide an additional three angle parking stalls. Furthermore, formalizing the on-street angle parking of the adjacent area on Second Avenue will provide five additional parking stalls, for a total of eight new angle parking stalls.

Staff Recommendation: Staff will consult with retail owners in the vicinity of the unused driveway regarding the proposal for its closure. If the proposal is agreeable to the adjacent business owners, the driveway will be closed and the rearrangement of the adjacent angle parking will be carried out.

2. Unused Driveway in the Vicinity of 3380 Bayview Street

The existing unused driveway fronts the Esso Marine Agency and is adjacent to an active driveway that provides access to the agency. A chain link fence and shrubs form a barrier at the front of the driveway (see attached photograph). There is also a grade difference between the back of the sidewalk and the property. Closing the driveway will provide one parallel parking stall.

Staff Recommendation: Upon further examination of this driveway, staff believe that the closure of this unused driveway is not justified at this time as the closure will provide only one additional parallel parking stall.

3. Relocate On-Street Parking on Bayview Street from the South Side to the North Side

On-street parking on the north side of Bayview Street will be constrained by:

- required 5-m clearances for the three fire hydrants located along the length of the street;
- required 6-m clearances for the two intersecting streets (First Avenue and Second Avenue) and two intersecting lanes; and
- a loading zone located at the west end of Bayview Street.

Given these constraints, a review of available on-street parking areas on Bayview Street found that there is room for 22 parallel parking stalls along the south side and 16 parallel parking stalls along the north side. This analysis therefore indicates that the relocation of on-street parking to the north side of Bayview Street will result in a net loss of six parallel parking stalls. In addition, vehicles parked on the south side of Bayview Street will impede the sightlines of traffic on the four intersecting streets and lanes for cross traffic on Bayview Street.

Staff Recommendation: Maintain the current on-street parking on Bayview Street on the south side.

4. Parking Signage for Oversize Vehicles

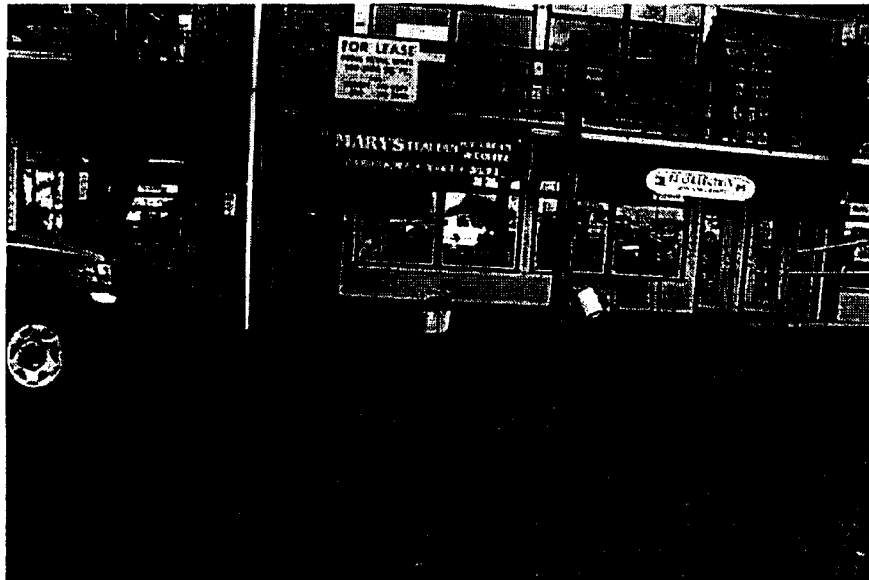
The Chatham Street parking lot, owned by the Federal Government, could be the designated parking area for oversize vehicles such as tour buses due to its ease of access and large capacity. A number of blue parking signs have recently been mounted in the Steveston Village area directing vehicles to the lot. In addition, two parking destination signs are proposed along Number One Road and Moncton Road to direct oversize vehicles to this lot.

Staff Recommendation: Install an additional tab below the existing parking signs for the Chatham Street parking lot indicating that the lot is for oversize vehicles and incorporate appropriate signage into the destination signs to direct oversize vehicles to the Chatham Street parking lot (see attached drawing).

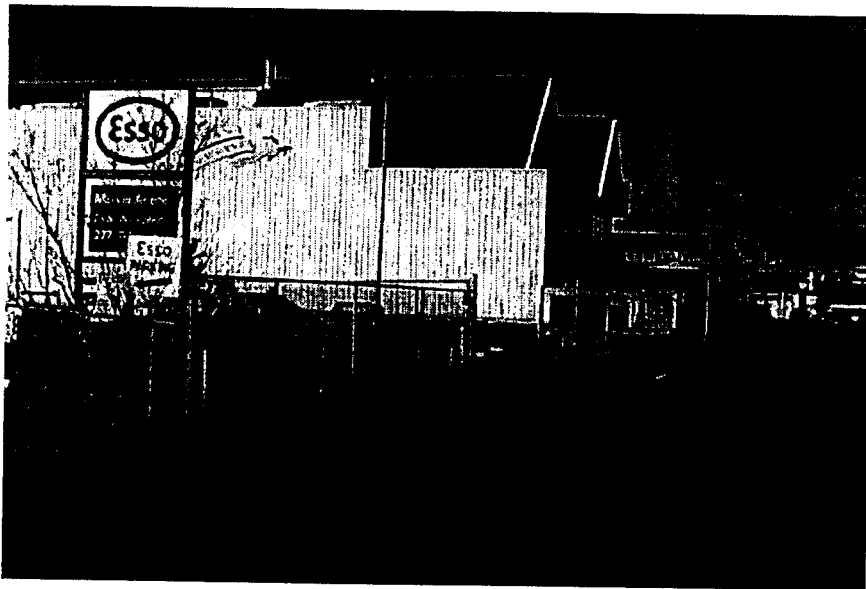


Gordon Chan, P. Eng.
Manager, Transportation

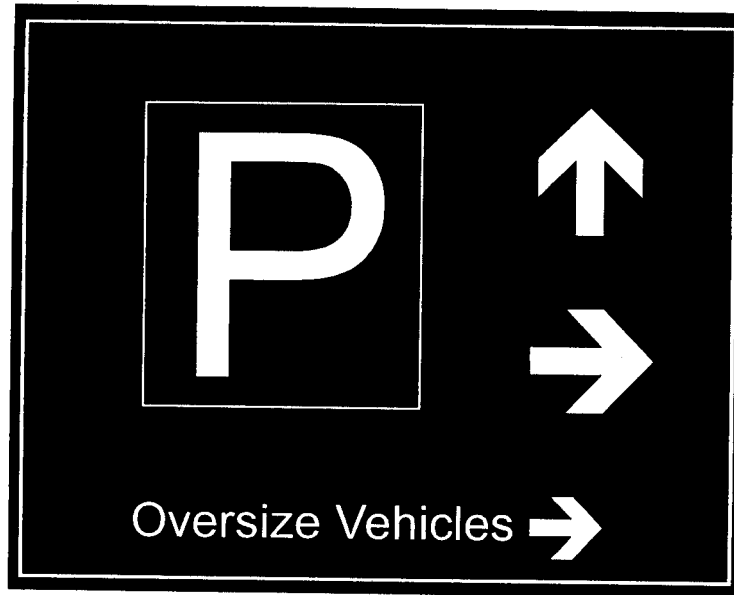
GFC:jc



SECOND AVENUE DRIVEWAY

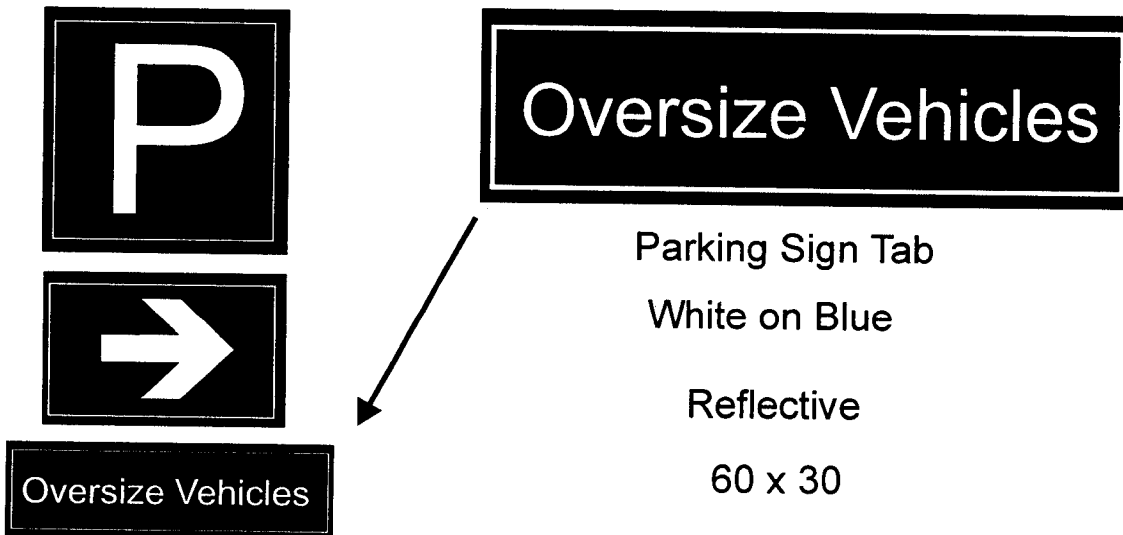


BAYVIEW STREET DRIVEWAY
126



White on Blue
 Reflective Signs
 90cm x 90cm

To be installed on No 1 Rd. and Moncton St.



Parking Sign Tab
 White on Blue
 Reflective
 60 x 30

Added to signs directing traffic to the
 Chatham Street Lot.

DESIGN: DN	DWG No. C:\StevParkingOversize.cdr	
DRAWN: DN	SCALE: NTS	DATE: Nov. 09, 2000
CHECKED:	SEC. No.	SHT. No. 1/1
ENGINEER:		